



Panera Bread Café #2461 Dillon CO

Signage Responsibility Matrix

Indicate QUANTITY in the appropriate column below for each item

Description	By Sign Vendor	By Panera GC	By Landlord/ others	N/A - none proposed or required	Description	By Sign Vendor	By Panera GC	By Landlord/ others	N/A - none proposed or required
Building Mounted Signage - Channel Letters	2				Drive-thru Clearance bar	1			
Building Mounted Logo-	3				Drive-thru Clearance bar foundation			1	
"Drive-Thru" Wall Sign	3				Drive-thru Canopy / speaker post	1			
Marque signs					Drive-thru Canopy / speaker post (future)				
Logo Wall Mural - Painted					Static Digital Preview Board	1			
Pole Sign Structure with Cabinet and Graphics					Drive-thru Preview Board foundation			1	
Monument Sign Structure, Masonry and Electrical					Static Digital menu board	1			
Monument Sign Foundation					Drive-thru Menu Board foundation			1	
Multi-Tenant Sign					Drive-thru Thank you/ Directional Signs	2			
Multi-Tenant Sign Foundation					Drive-thru Thank you/ Directional Sign foundations	2			
Panera Panels for Multi-Tenant Sign - FACES ONLY					Other (Describe fully)				
Rapid Pick-Up Signs - bollard mount					Awning Engineering				
Drive Thru Waiting Sign - bollard mount					Architectural Building Canopy				
Merge Sign -Bollard req'd - bollard mount .					Awnings	6			
Painted Wall Mural					Stencil Set	1			

ARTWORK EXCLUSIVE PROPERTY OF

SINCE  1917

**MANDEVILLE SIGN**  
making your mark.

676 GEORGE WASHINGTON HIGHWAY  
LINCOLN, RI 02865-4255

PHONE 401-334-9100 FAX 401-334-7799  
WEB www.mandevillesign.com

**APPROVALS**  
*Signatures Required Before Release to Production*

Engineering	DATE
Sales	DATE
Production	DATE

All electrical signs shall comply with the National Electric Code (Article 600) and be manufactured according to Underwriters Laboratories U.L. 48 standards and labeled accordingly.

**REVISIONS**

NO.	BY	DESCRIPTION	DATE
1			
2			
3			
4			
5			
6			

CUSTOMER

2461 

STORE#

**DILLON, CO**

LOCATION

WORK ORDER NUMBER(S) **31984**

PROJECT MANAGER **Wendy R.**

WD	01/23/19
ARTIST	DATE

DRAWING NAME **31984.1**

**APPROVALS**  
 Signatures Required Before Release to Production

Engineering	BY	DATE
Sales	BY	DATE
Estimating	BY	DATE
Production	BY	DATE
Quality Control	BY	DATE

PDF NAME

**REVISIONS**

NO.	BY	DESCRIPTION	DATE
1	JM	updated to stacked layout	02/12/19
2	WD	omit "bread", add d/t cabinet	04/15/19
3	WD	omit d/t cabinet	04/19/19
4	WD	update to new logo standards	08/27/19
5	WD	adjust signs / sizes	09/03/19
6	JR	update colors	09/11/19
7	GC	updated to current standards	04/13/22
8	GC	wall sign layout	04/19/22
9	GC	updated logo	06/16/22
10	GC	UPDATED ELEVATIONS	08/04/22

All electrical signs shall comply with the National Electric Code (Article 600) and be manufactured according to Underwriters Laboratories U.L. 48 standards and labeled accordingly.

31984



CUSTOMER

2461

STORE NUMBER

DILLON, CO

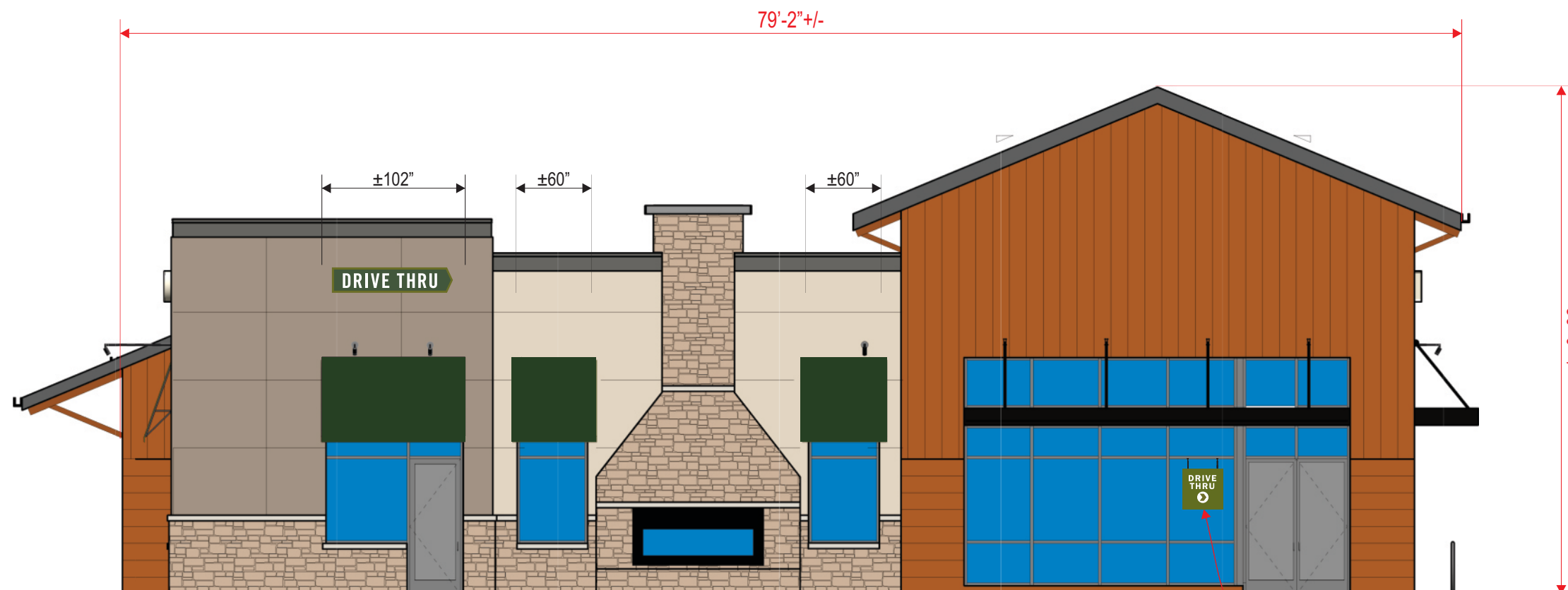
LOCATION

PROJECT MANAGER Carla M.

WD 01/23/19  
 ARTIST DATE

31984.2

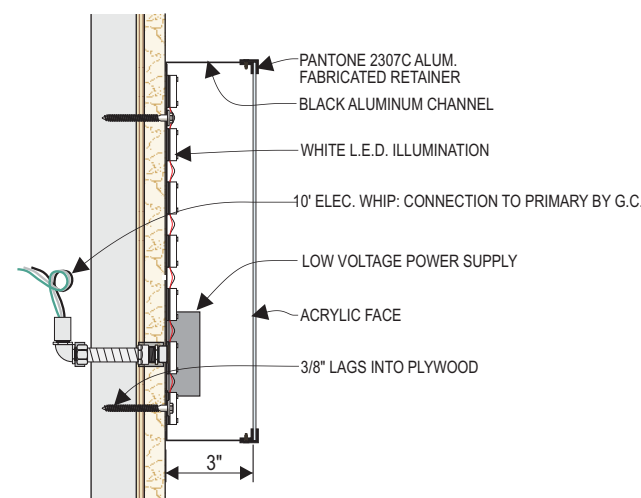
DRAWING NAME



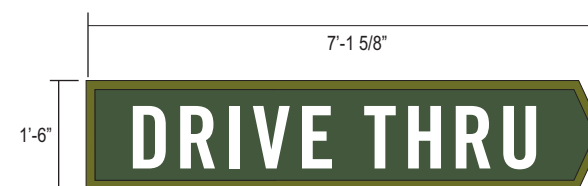
SOUTH ELEVATION: 1/8" = 1'-0"

TOTAL AREA OF ALL WALL SIGNS = 10.70 SQ.FT.

WINDOW SIGN  
 SEE: 31984.11



DRIVE THRU CABINET SIGN SECTION: N.T.S.



SCALE: 3/8" = 1'-0"

10.70 S/F TOTAL

INTERNALLY ILLUMINATED "DRIVE THRU" WALL SIGN

- 3" DEEP ALUMINUM CHANNEL AND RETAINER PAINTED PANTONE 2307 C
- WHITE ACRYLIC FACE WITH FIRST SURFACE DIGITAL PRINT
- PANTONE 2307C C BORDER & CIRCLE BEHIND ARROW
- PANTONE 2410 C GREEN BACKGROUND BEHIND RAPID PICK UP
- WHITE DRIVE THRU COPY AND ARROW
- SLOAN 6500K PRISM WHITE LED ILLUMINATION

PANERA SLATE  
 PANTONE 7540 C  
 C67 M54 Y46 K40  
 R75 G79 B84  
 HEX #4B4F54

PANTONE 476 CP  
 CMYK: 30 / 71 / 75 / 81  
 RGB: 84 / 60 / 46  
 HEX: 543C2E

SUN DAPPLE  
 PANTONE 7403 C  
 C5 M15 Y55 K0  
 R238 G212 B132  
 HEX #EED484

PANERA GREEN  
 PANTONE 2307 C  
 C32 M2 Y100 K61  
 R104 G111 B18  
 HEX #686F12

PANTONE 2410 C



**MANDEVILLE SIGN**  
making your mark.

676 GEORGE WASHINGTON HIGHWAY  
LINCOLN, RI 02865-4255

401-334-9100 401-334-7799  
PHONE FAX

www.mandevillesign.com  
WEB

**APPROVALS**

Signatures Required Before Release to Production

Engineering	BY	DATE
Sales	BY	DATE
Estimating	BY	DATE
Production	BY	DATE
Quality Control	BY	DATE

PDF NAME

**REVISIONS**

NO.	BY	DESCRIPTION	DATE
1	JM	updated to stacked layout	02/12/19
2	WD	omit "bread", add d/t cabinet	04/15/19
3	WD	update to new logo standards	08/27/19
4	WD	omit signs	09/03/19
5	JR	update colors	09/11/19
6	GC	updated to current standards	04/13/22
7	GC	removed awning graphics	06/27/22
8	GC	adjusted wall signs	07/01/22
9	GC	UPDATED ELEVATIONS	08/04/22
10			

All electrical signs shall comply with the National Electric Code (Article 600) and be manufactured according to Underwriters Laboratories U.L. 48 standards and labeled accordingly.

**31984-1**



CUSTOMER

**2461**

STORE NUMBER

**DILLON, CO**

LOCATION

PROJECT MANAGER **Carla M.**

WD 01/23/19  
ARTIST DATE

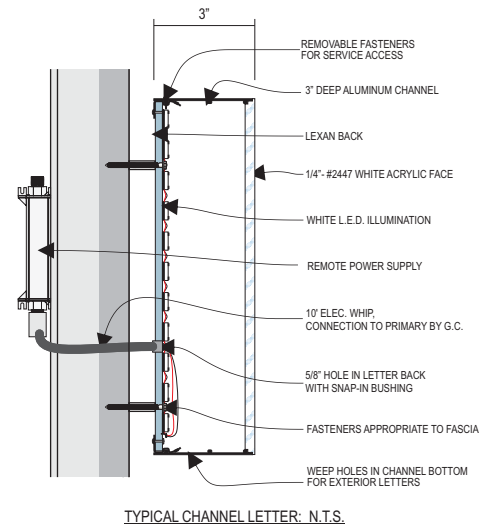
**31984.3**

DRAWING NAME

68'-10" +/-

±60"

30'-0"

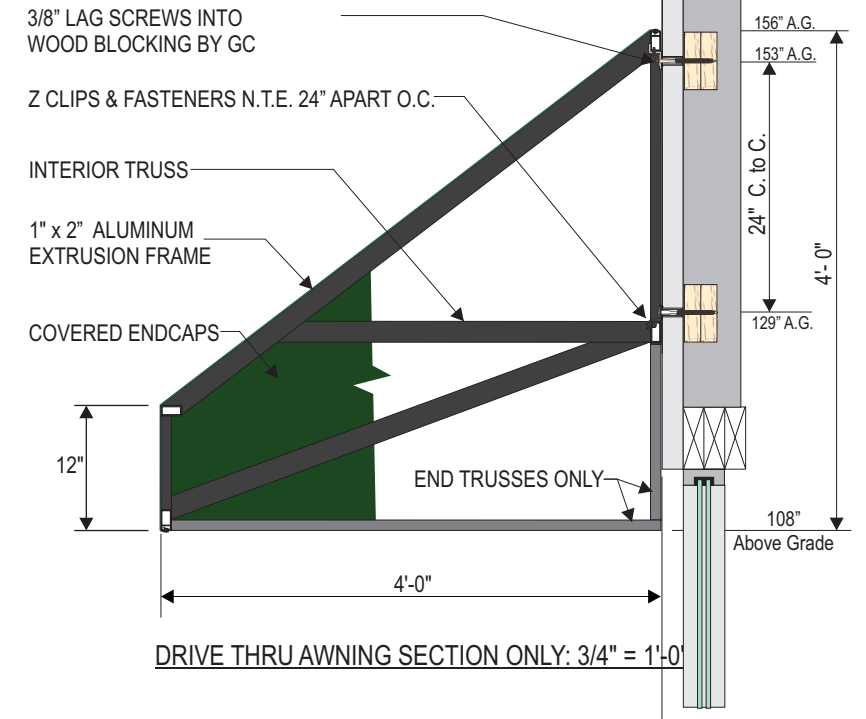


WEST ELEVATION: 1/8" = 1'-0"

TOTAL AREA OF ALL WALL SIGNS = 70.9 SQ.FT.



- INTERNALLY ILLUMINATED FRONT LIT/HALO LIT CHANNEL LETTERS:  
 "PANERA BREAD" LETTERS  
 - 2447 WHITE FACES WITH 3" DEEP CHANNELS PAINTED PANTONE 7540 C SLATE  
 - CLEAR LEXAN BACKS  
 - 6500K SLOAN PRISM WHITE LED LIGHTING (PANERA BREAD)  
 - 5000K SLOAN PRISM (MOTHER BREAD)  
 - TRIMLESS DESIGN  
 - MB LOGO WITH PANTONE 7403 CP -INTERNALLY LIT/HALO LIT TRANSLUCENT BACKGROUND  
 WITH TRANSLUCENT PANTONE 476 CP DETAILS  
 - 3" DEEP CHANNEL PAINTED TO MATCH PANTONE 7540 C SLATE  
 - ALL GRAPHICS TO BE PINNED OFF WALL 1"  
 - REMOTE POWER SUPPLIES



DRIVE THRU AWNING SECTION ONLY: 3/4" = 1'-0"



**MANDEVILLE SIGN**  
making your mark.

676 GEORGE WASHINGTON HIGHWAY  
LINCOLN, RI 02865-4255

401-334-9100 401-334-7799  
PHONE FAX

WEB [www.mandevillesign.com](http://www.mandevillesign.com)

**APPROVALS**

Signatures Required Before Release to Production

Engineering	BY	DATE
Sales	BY	DATE
Estimating	BY	DATE
Production	BY	DATE
Quality Control	BY	DATE

PDF NAME

**REVISIONS**

NO.	BY	DESCRIPTION	DATE
1	JM	added windows and awning	02/12/19
2	WD	omit "bread", add d/t cabinet	04/15/19
3	WD	update to new logo standards	08/27/19
4	WD	adjust signs / sizes	09/03/19
5	JR	update colors	09/11/19
6	GC	updated to current standards	04/13/22
7	GC	wall sign layout	04/19/22
8	GC	updated logo	06/16/22
9	GC	removed awning graphics	06/27/22
10	GC	UPDATED ELEVATIONS	08/04/22

All electrical signs shall comply with the National Electric Code (Article 600) and be manufactured according to Underwriters Laboratories U.L. 48 standards and labeled accordingly.

**31984-1**



CUSTOMER

**2461**

STORE NUMBER

**DILLON, CO**

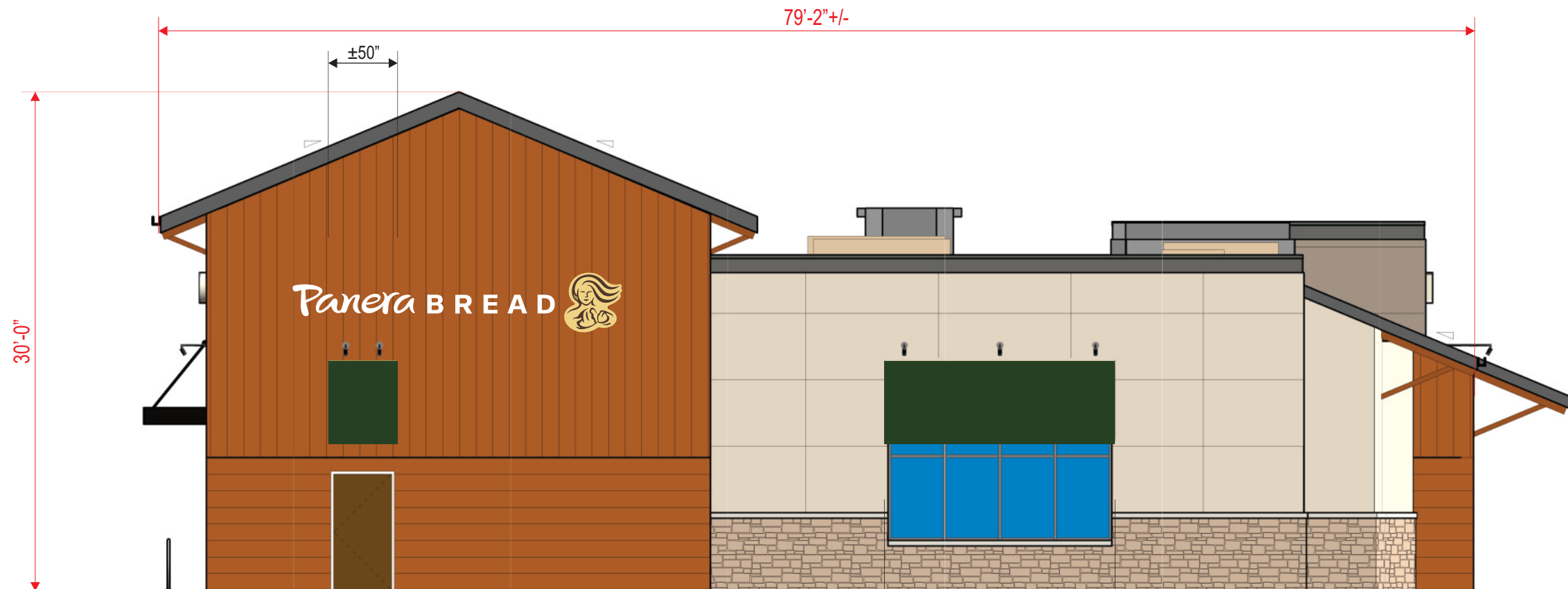
LOCATION

PROJECT MANAGER **Carla M.**

WD 01/23/19  
ARTIST DATE

**31984.4**

DRAWING NAME

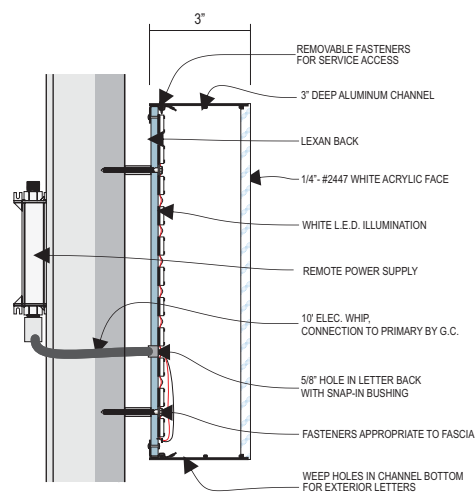


NORTH ELEVATION: 1/8" = 1'-0"

TOTAL AREA OF ALL WALL SIGNS = 70.9 SQ.FT.



SCALE: 3/8" = 1'-0"



TYPICAL CHANNEL LETTER: N.T.S.

- INTERNALLY ILLUMINATED FRONT LIT/HALO LIT CHANNEL LETTERS:  
"PANERA BREAD" LETTERS
- 2447 WHITE FACES WITH 3" DEEP CHANNELS PAINTED PANTONE 7540 C SLATE
  - CLEAR LEXAN BACKS
  - 6500K SLOAN PRISM WHITE LED LIGHTING (PANERA BREAD)
  - 5000K SLOAN PRISM (MOTHER BREAD)
  - TRIMLESS DESIGN
  - MB LOGO WITH PANTONE 7403 CP -INTERNALLY LIT/HALO LIT TRANSLUCENT BACKGROUND WITH TRANSLUCENT PANTONE 476 CP DETAILS
  - 3" DEEP CHANNEL PAINTED TO MATCH PANTONE 7540 C SLATE
  - ALL GRAPHICS TO BE PINNED OFF WALL 1"
  - REMOTE POWER SUPPLIES

PANERA SLATE  
PANTONE 7540 C  
C67 M54 Y46 K40  
R75 G79 B84  
HEX #4B4F54

PANTONE 476 CP  
CMYK: 30 / 71 / 75 / 81  
RGB: 84 / 60 / 46  
HEX: 543C2E

SUN DAPPLE  
PANTONE 7403 C  
C5 M15 Y55 K0  
R238 G212 B132  
HEX #EED484

PANERA GREEN  
PANTONE 2307 C  
C32 M2 Y100 K61  
R104 G111 B18  
HEX #686F12

PANTONE 2410 C



**MANDEVILLE SIGN**  
making your mark.

676 GEORGE WASHINGTON HIGHWAY  
LINCOLN, RI 02865-4255

401-334-9100 401-334-7799  
PHONE FAX

www.mandevillesign.com  
WEB

**APPROVALS**

Signatures Required Before Release to Production

Engineering	
BY	DATE
Sales	
BY	DATE
Estimating	
BY	DATE
Production	
BY	DATE
Quality Control	
BY	DATE

PDF NAME

**REVISIONS**

NO.	BY	DESCRIPTION	DATE
1	JM	updated to stacked layout	02/12/19
2	WD	sign delete	04/15/19
3	JR	update colors	09/11/19
4	GC	updated to current standards	04/13/22
5	GC	removed awning graphics	06/27/22
6	GC	adjusted wall signs	07/01/22
7	GC	UPDATED ELEVATIONS	08/04/22
8			
9			
10			

All electrical signs shall comply with the National Electric Code (Article 600) and be manufactured according to Underwriters Laboratories U.L. 48 standards and labeled accordingly.

31984-1



CUSTOMER

2461

STORE NUMBER

DILLON, CO

LOCATION

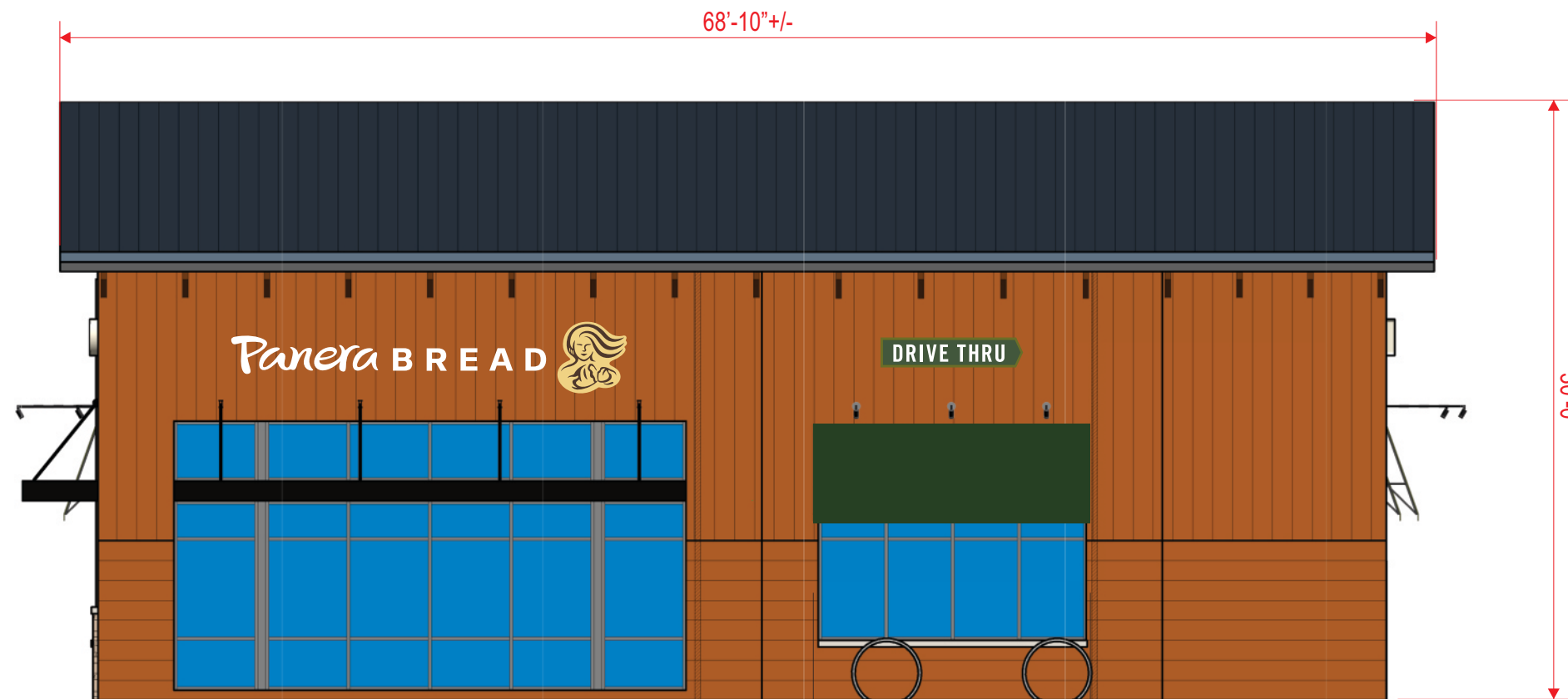
Carla M.

PROJECT MANAGER

WD 01/23/19  
ARTIST DATE

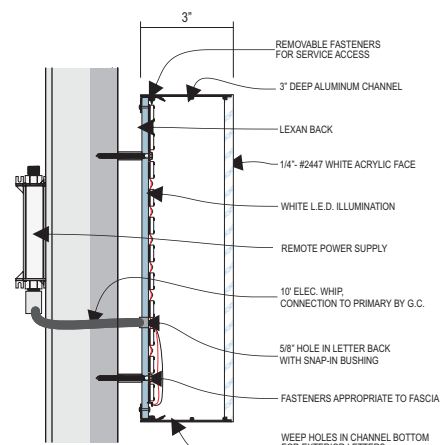
31984.5

DRAWING NAME



EAST ELEVATION: 1/8" = 1'-0"

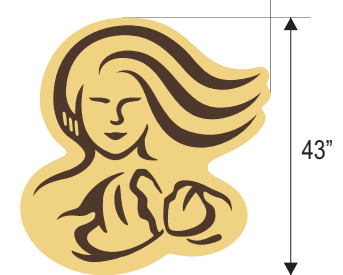
TOTAL AREA OF ALL WALL SIGNS = 89.8 SQ.FT.



TYPICAL CHANNEL LETTER: N.T.S.



SCALE: 3/8" = 1'-0"



**INTERNALLY ILLUMINATED FRONT LIT/HALO LIT CHANNEL LETTERS:**

- "PANERA BREAD" LETTERS
- 2447 WHITE FACES WITH 3" DEEP CHANNELS PAINTED PANTONE 7540 C SLATE
- CLEAR LEXAN BACKS
- 6500K SLOAN PRISM WHITE LED LIGHTING (PANERA BREAD)
- 5000K SLOAN PRISM (MOTHER BREAD)
- TRIMLESS DESIGN
- MB LOGO WITH PANTONE 7403 CP - INTERNALLY LIT/HALO LIT TRANSLUCENT BACKGROUND
- WITH TRANSLUCENT PANTONE 476 CP DETAILS
- 3" DEEP CHANNEL PAINTED TO MATCH PANTONE 7540 C SLATE
- ALL GRAPHICS TO BE PINNED OFF WALL 1"
- REMOTE POWER SUPPLIES

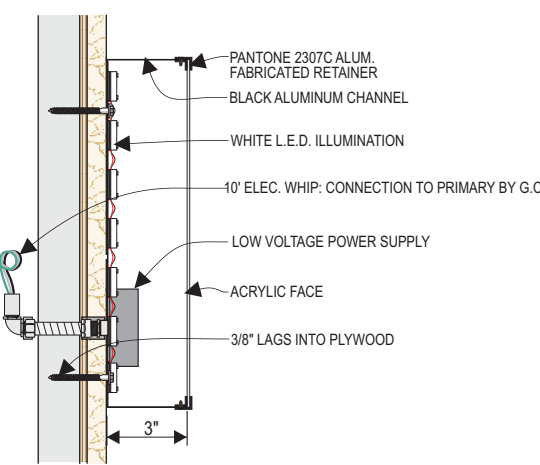


SCALE: 3/8" = 1'-0"

10.70 S/F TOTAL

**INTERNALLY ILLUMINATED "DRIVE THRU" WALL SIGN**

- 3" DEEP ALUMINUM CHANNEL AND RETAINER PAINTED PANTONE 2307 C
- WHITE ACRYLIC FACE WITH FIRST SURFACE DIGITAL PRINT
- PANTONE 2307C C BORDER & CIRCLE BEHIND ARROW
- PANTONE 2410 C GREEN BACKGROUND BEHIND RAPID PICK UP
- WHITE DRIVE THRU COPY AND ARROW
- SLOAN 6500K PRISM WHITE LED ILLUMINATION



DRIVE THRU CABINET SIGN SECTION: N.T.S.

PANERA SLATE  
PANTONE 7540 C  
C67 M54 Y46 K40  
R75 G79 B84  
HEX #4B4F54

PANTONE 476 CP  
CMYK: 30 / 71 / 75 / 81  
RGB: 84 / 60 / 46  
HEX: 543C2E

SUN DAPPLE  
PANTONE 7403 C  
C5 M15 Y55 K0  
R238 G212 B132  
HEX #EED484

PANERA GREEN  
PANTONE 2307 C  
C32 M2 Y100 K61  
R104 G111 B18  
HEX #686F12

PANTONE 2410 C



**MANDEVILLE SIGN**  
making your mark.

676 GEORGE WASHINGTON HIGHWAY  
LINCOLN, RI 02865-4255

401-334-9100 401-334-7799  
PHONE FAX

www.mandevillesign.com  
WEB

**APPROVALS**

Signatures Required Before Release to Production

Engineering	
BY	DATE
Sales	
BY	DATE
Estimating	
BY	DATE
Production	
BY	DATE
Quality Control	
BY	DATE

PDF NAME

**REVISIONS**

NO.	BY	DESCRIPTION	DATE
1	GC	updated to current standards	04/13/22
2	GC	removed awning graphics	06/27/22
3			
4			
5			
6			
7			
8			
9			
10			

All electrical signs shall comply with the National Electric Code (Article 600) and be manufactured according to Underwriters Laboratories U.L. 48 standards and labeled accordingly.

**31984-1**



CUSTOMER

**2461**

STORE NUMBER

**DILLON, CO**

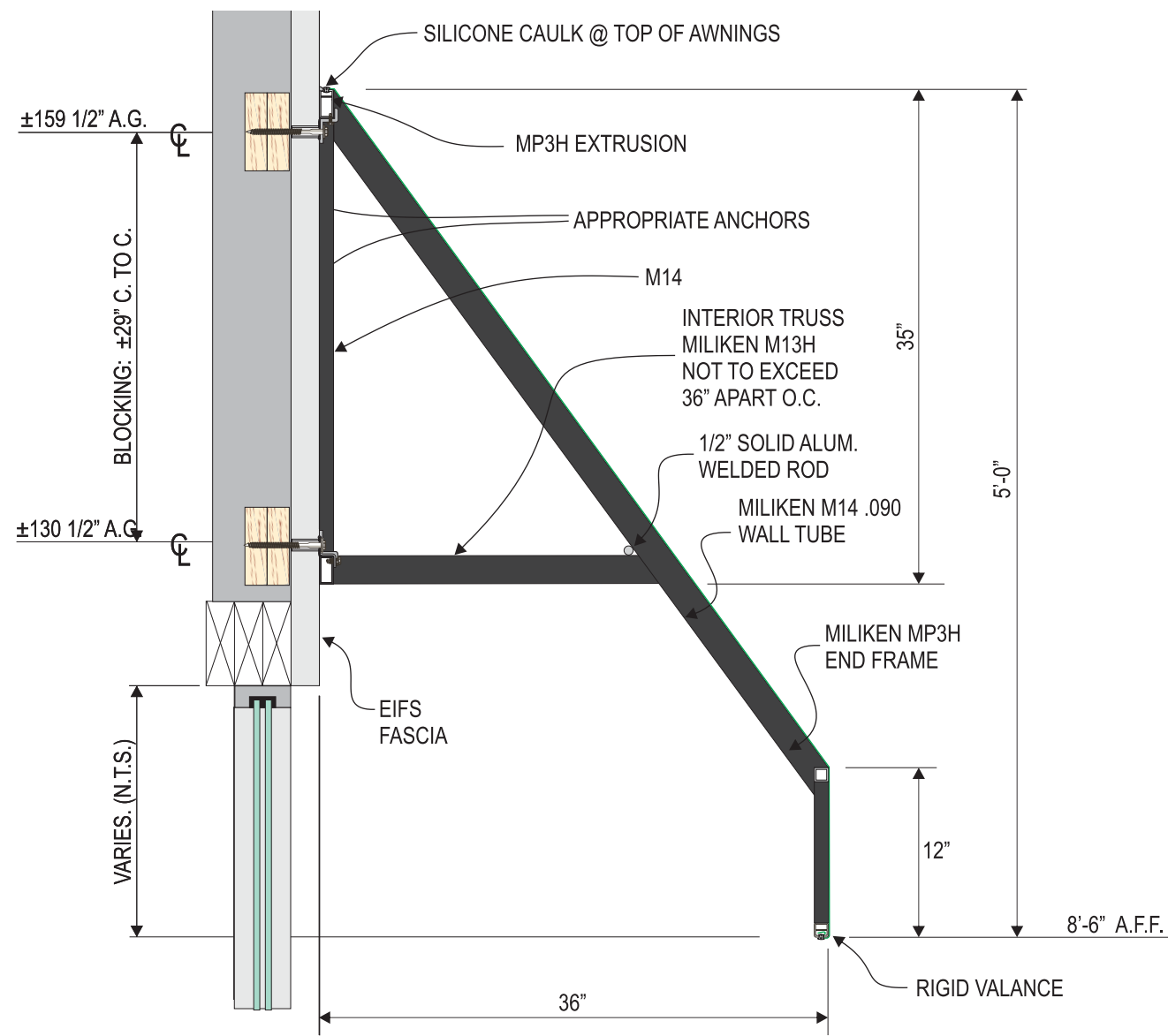
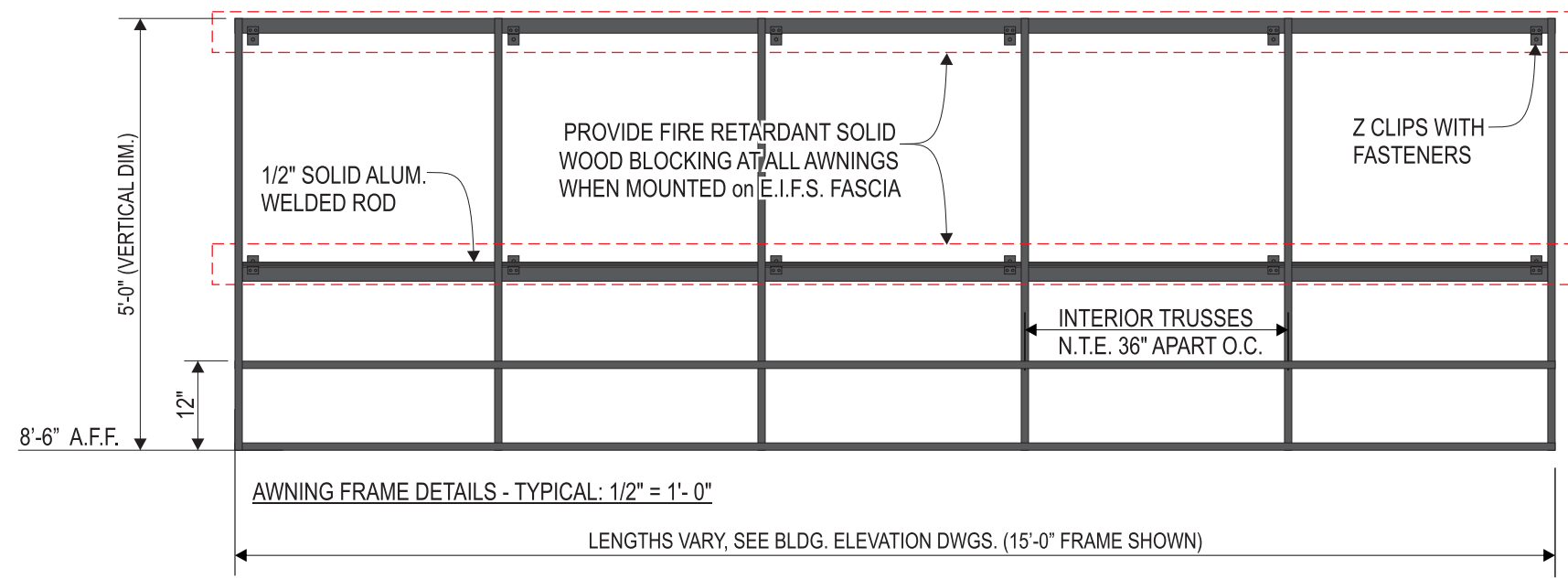
LOCATION

PROJECT MANAGER **Carla M.**

WD 01/23/19  
ARTIST DATE

**31984.6**

DRAWING NAME



ALUMINUM FRAMED STOREFRONT AWNINGS:

- 1" x 2" x .125 TUBE ALUMINUM EXTRUSION WELDED FRAME
- FRAME POWDER BM "Cheating Heart"
- TRUSS SPACING N.T.E. 36" APART O.C.
- WEATHER TYTE WTY15PLS COVERS
- OPEN SOFFIT, OPEN ENDS
- PVC TRIM STAPLE COVER TO MATCH FRAMES
- MOUNTED USING Z-CLIPS & APPROPRIATE ANCHORS
- G.C. TO PROVIDE BLOCKING IF NEEDED

FABRIC COVERS HAVE FIRE RATING NFPA 701.

AWNING ENGINEERING IS AT THE DISCRETION OF THE BUILDING INSPECTOR.



ARTWORK EXCLUSIVE PROPERTY OF  
 SINCE 1917

**MANDEVILLE SIGN**  
*making your mark.*

676 GEORGE WASHINGTON HIGHWAY  
 LINCOLN, RI 02865-4255

401-334-9100 401-334-7799  
 PHONE FAX

WEB [www.mandevillesign.com](http://www.mandevillesign.com)

**APPROVALS**  
*Signatures Required Before Release to Production*

<b>Engineering</b>	
BY	DATE
<b>Sales</b>	
BY	DATE
<b>Estimating</b>	
BY	DATE
<b>Production</b>	
BY	DATE
<b>Quality Control</b>	
BY	DATE

PDF NAME

**REVISIONS**

NO.	BY	DESCRIPTION	DATE
1	JM	added directional sign	01/29/19
2	GC	updated to current standards	04/13/22
3	GC	UPDATED SITE MAP	09/01/22
4			
5			
6			
7			
8			
9			
10			

All electrical signs shall comply with the National Electric Code (Article 600) and be manufactured according to Underwriters Laboratories U.L. 48 standards and labeled accordingly.

31984-1

CUSTOMER

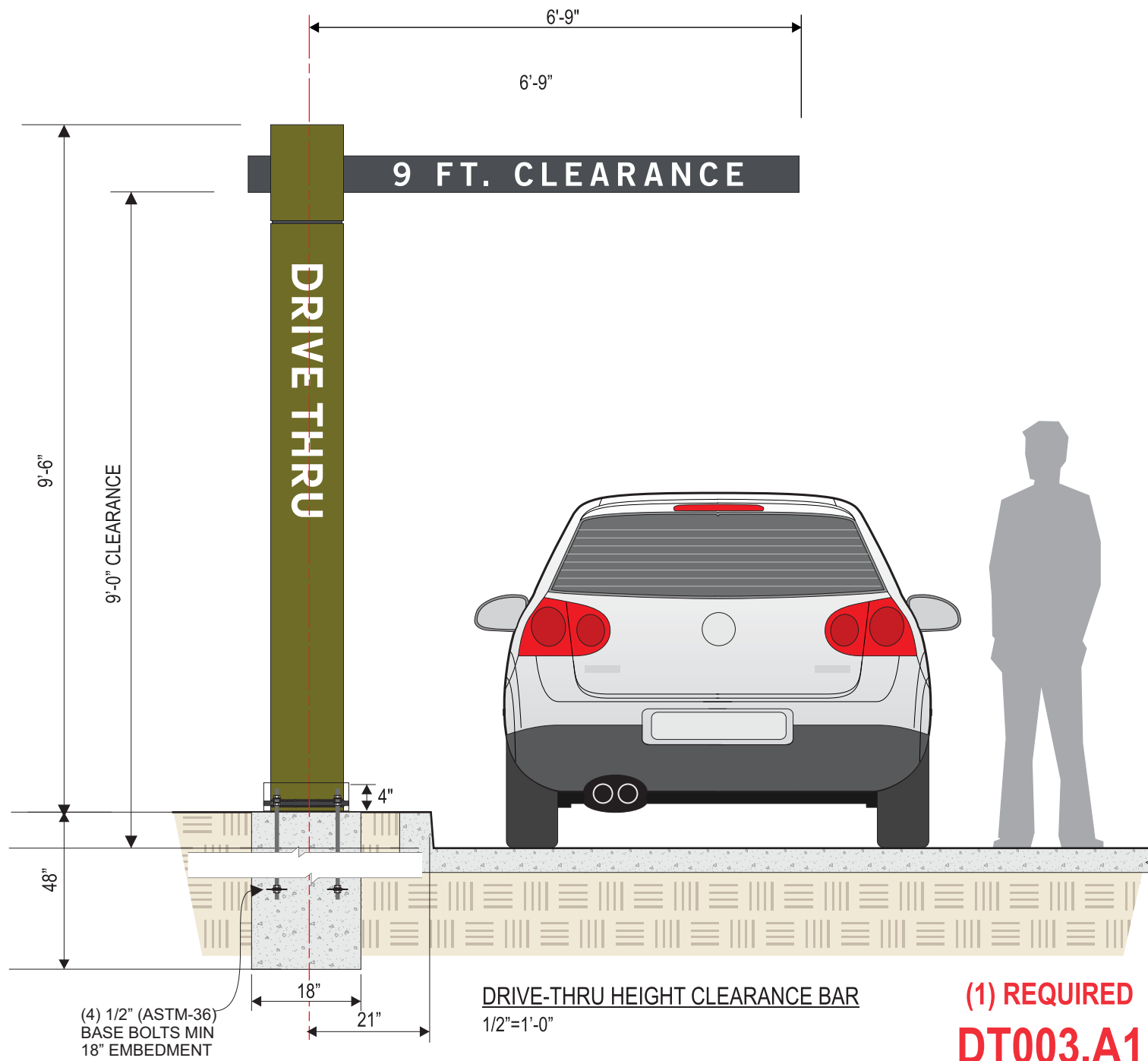
STORE NUMBER **2461**

LOCATION **DILLON, CO**

PROJECT MANAGER **Carla M.**

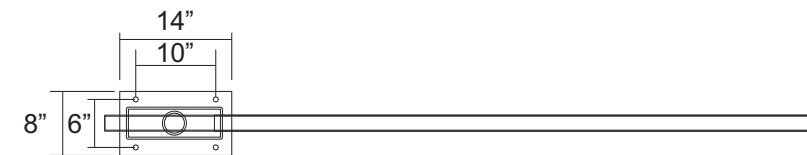
WD	01/23/19
ARTIST	DATE

DRAWING NAME **31984.7**

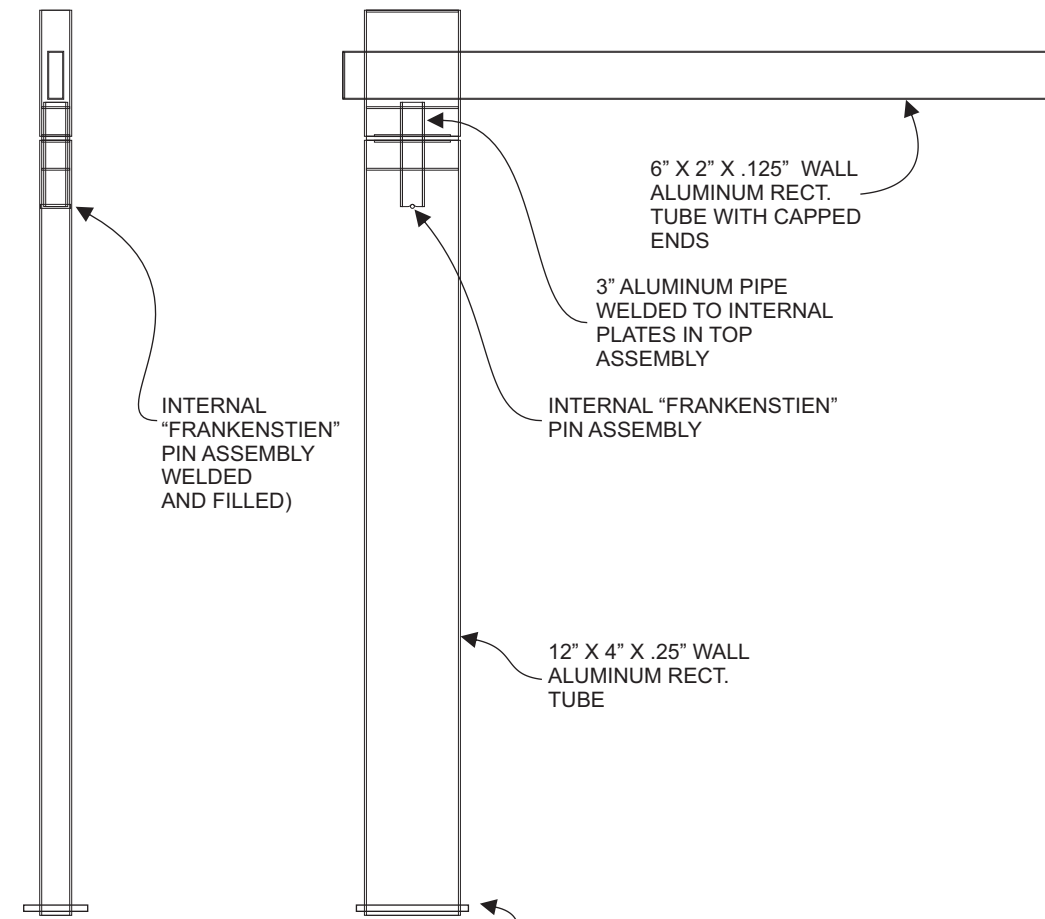


CLEARANCE BAR SIGN  
1/2" = 1'-0"

PANERA GREEN PANTONE 2307 C C32 M2 Y100 K61 R104 G111 B18 HEX #686F12	PANERA SLATE PANTONE 7540 C C67 M54 Y46 K40 R75 G79 B84 HEX #4B4F54
---	---



PLAN VIEW



END VIEW

SIDE VIEW

CLEARANCE BAR SIGN  
1/2" = 1'-0"



**MANDEVILLE SIGN**  
making your mark.

676 GEORGE WASHINGTON HIGHWAY  
LINCOLN, RI 02865-4255

401-334-9100 401-334-7799  
PHONE FAX

WEB [www.mandevillesign.com](http://www.mandevillesign.com)

**APPROVALS**

Signatures Required Before Release to Production

Engineering	
BY	DATE
Sales	
BY	DATE
Estimating	
BY	DATE
Production	
BY	DATE
Quality Control	
BY	DATE

PDF NAME

**REVISIONS**

NO.	BY	DESCRIPTION	DATE
1	JM	added directional sign	01/29/19
2	GC	updated to current standards	04/13/22
3	GC	updated logo	06/16/22
4			
5			
6			
7			
8			
9			
10			

All electrical signs shall comply with the National Electric Code (Article 600) and be manufactured according to Underwriters Laboratories U.L. 48 standards and labeled accordingly.

**31984-1**



CUSTOMER

**2461**

STORE NUMBER

**DILLON, CO**

LOCATION

PROJECT MANAGER **Carla M.**

WD 01/23/19  
ARTIST DATE

**31984.8**

DRAWING NAME





**MANDEVILLE SIGN**  
making your mark.

676 GEORGE WASHINGTON HIGHWAY  
LINCOLN, RI 02865-4255

401-334-9100 401-334-7799  
PHONE FAX

www.mandevillesign.com  
WEB

**APPROVALS**

Signatures Required Before Release to Production

Engineering	BY	DATE
Sales	BY	DATE
Estimating	BY	DATE
Production	BY	DATE
Quality Control	BY	DATE

PDF NAME

**REVISIONS**

NO.	BY	DESCRIPTION	DATE
1	JM	added directional sign	01/29/19
2	GC	updated to current standards	04/13/22
3	GC	updated logo	06/16/22
4			
5			
6			
7			
8			
9			
10			

All electrical signs shall comply with the National Electric Code (Article 600) and be manufactured according to Underwriters Laboratories U.L. 48 standards and labeled accordingly.

31984-1



CUSTOMER

2461

STORE NUMBER

DILLON, CO

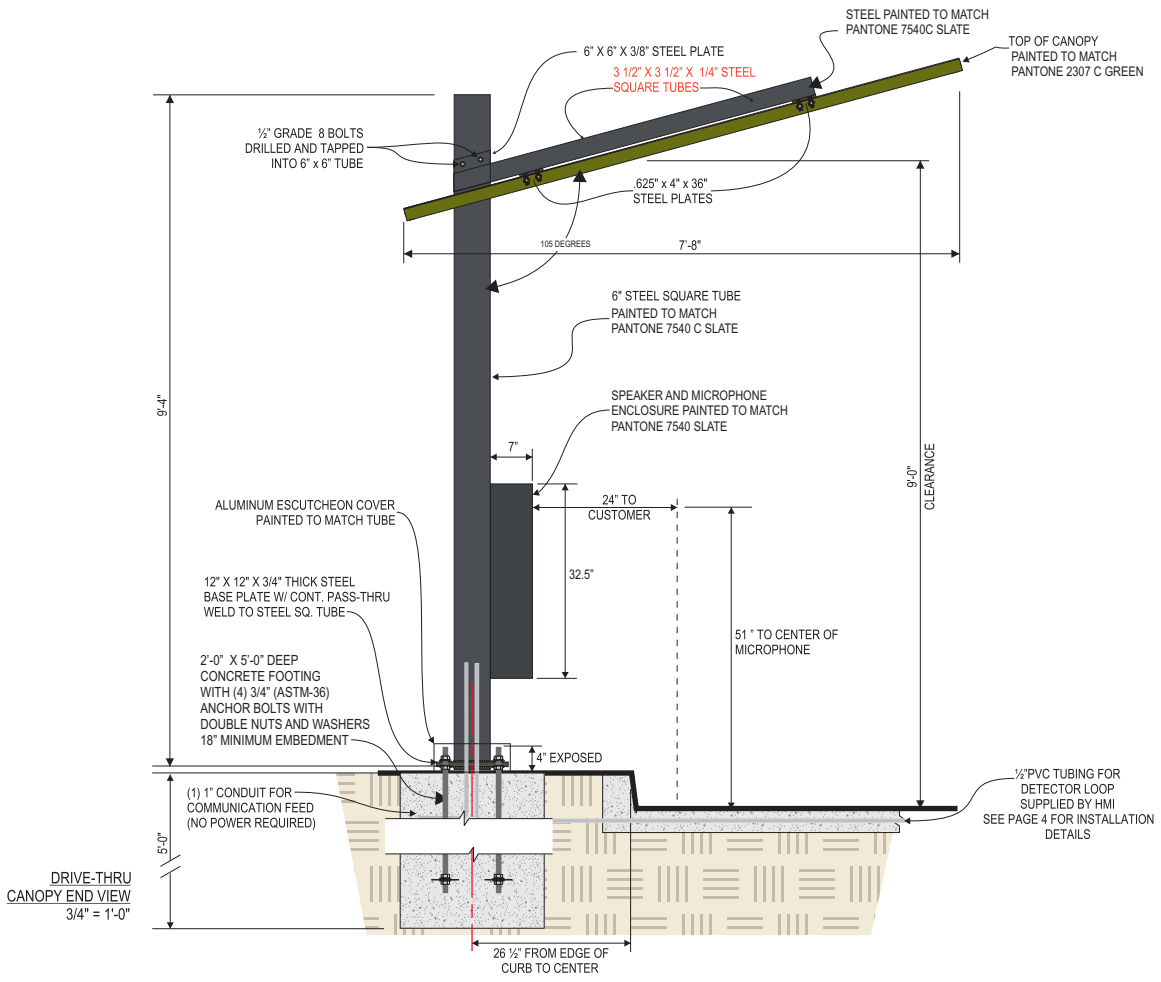
LOCATION

PROJECT MANAGER Carla M.

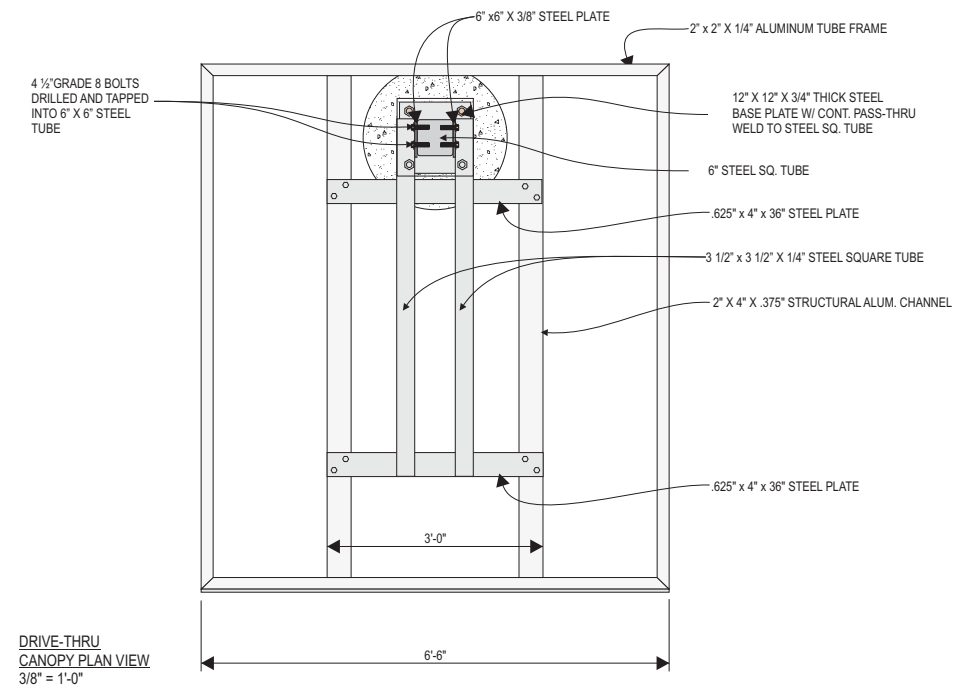
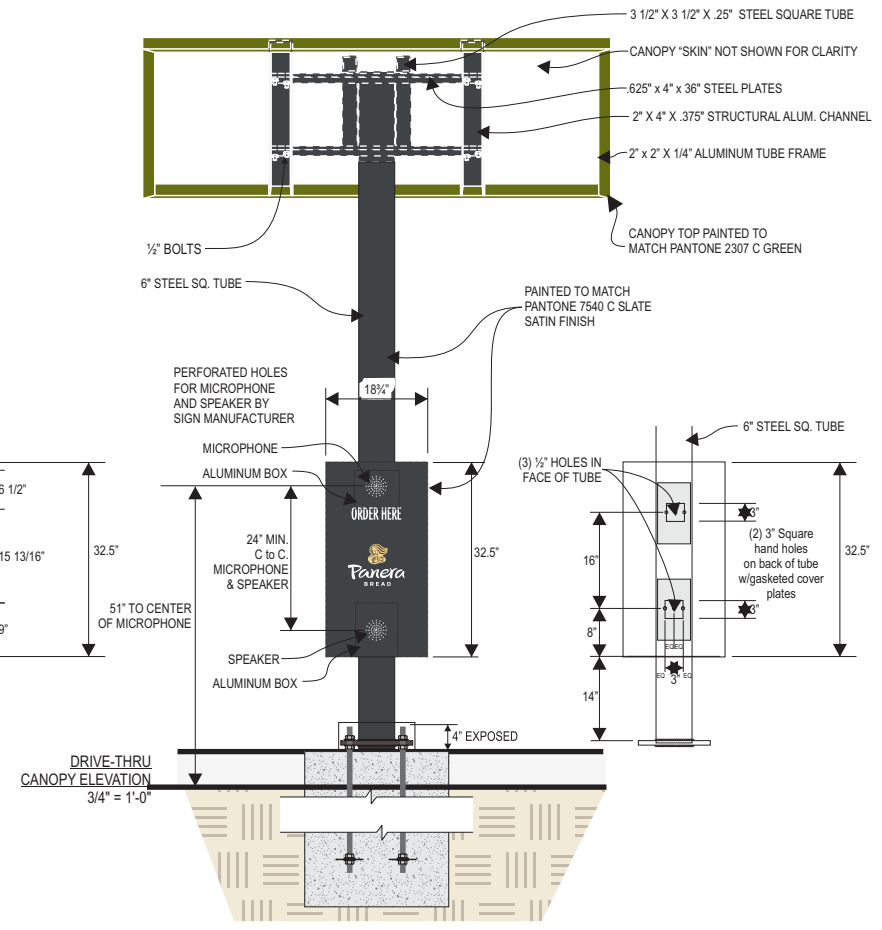
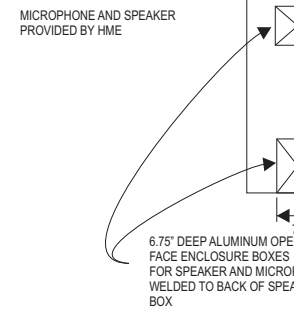
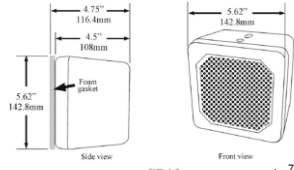
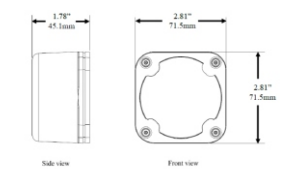
WD 01/23/19  
ARTIST DATE

31984.9

DRAWING NAME



**DT001.A1**



Static digital board and preview board



DT004.A1



DT005.A1

ARTWORK EXCLUSIVE PROPERTY OF  
SINCE 1917

MANDEVILLE SIGN  
making your mark.

676 GEORGE WASHINGTON HIGHWAY  
LINCOLN, RI 02865-4255

401-334-9100 401-334-7799  
PHONE FAX

WEB www.mandevillesign.com

**APPROVALS**  
Signatures Required Before Release to Production

Engineering	BY	DATE
Sales	BY	DATE
Estimating	BY	DATE
Production	BY	DATE
Quality Control	BY	DATE

PDF NAME

REVISIONS			
NO.	BY	DESCRIPTION	DATE
1	WD	update to new logo standards	08/27/19
2	GC	updated to current standards	04/13/22
3	GC	updated logo	06/16/22
4			
5			
6			
7			
8			
9			
10			

All electrical signs shall comply with the National Electric Code (Article 600) and be manufactured according to Underwriters Laboratories U.L. 48 standards and labeled accordingly.

31984-1



CUSTOMER

2461

STORE NUMBER

DILLON, CO

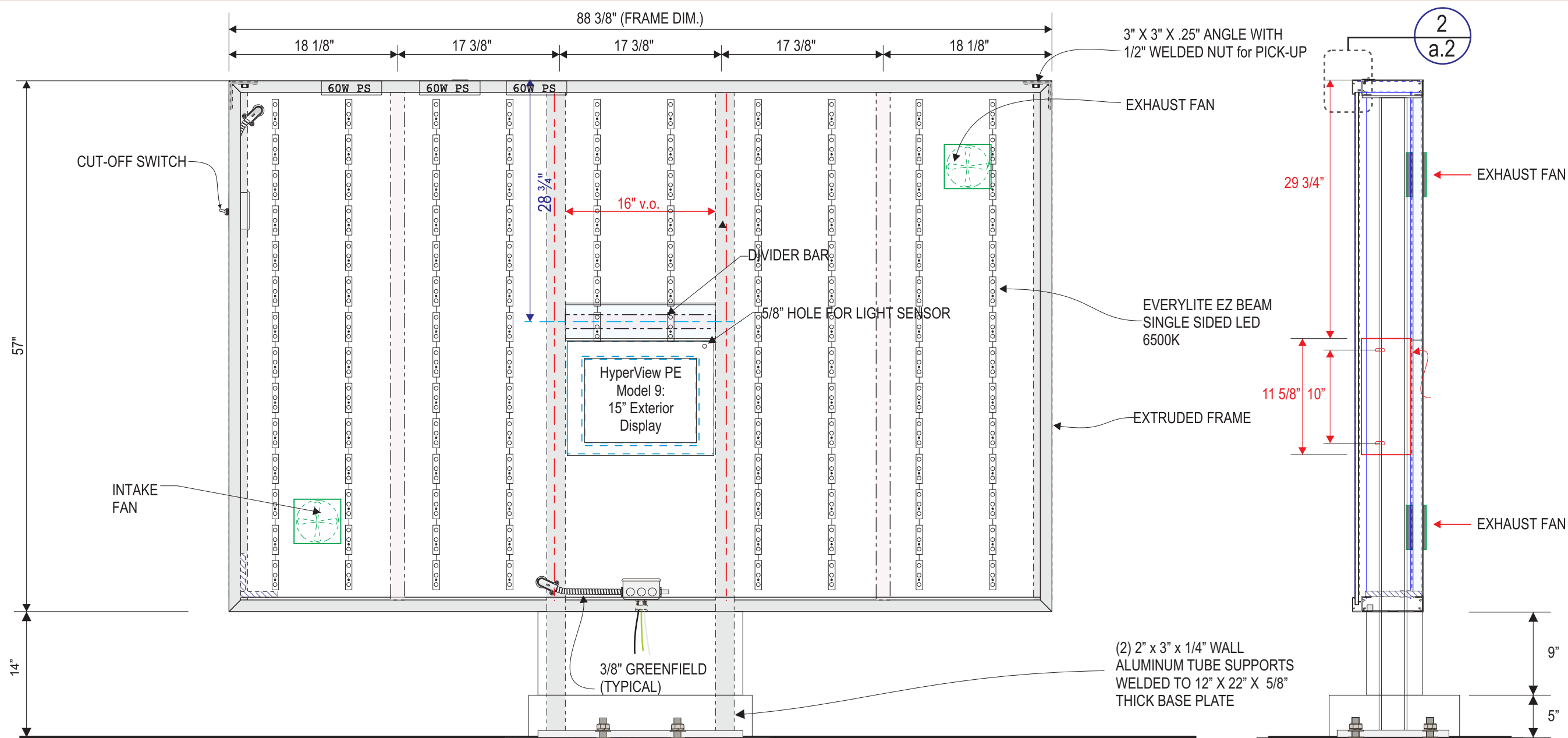
LOCATION

PROJECT MANAGER Carla M.

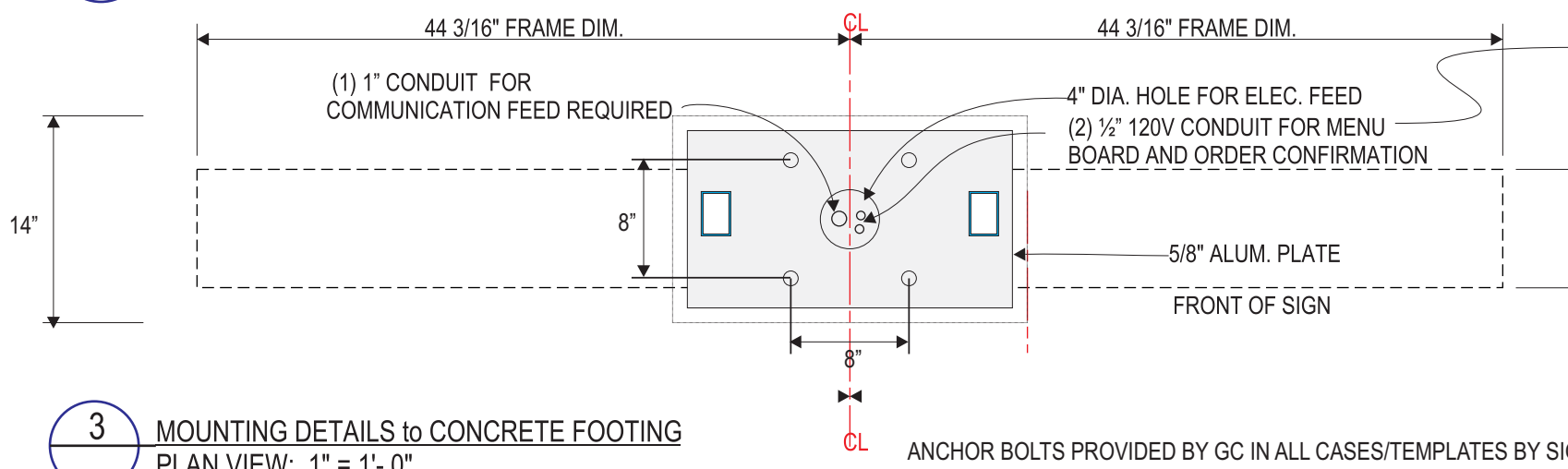
WD	01/23/19
ARTIST	DATE

31984.10

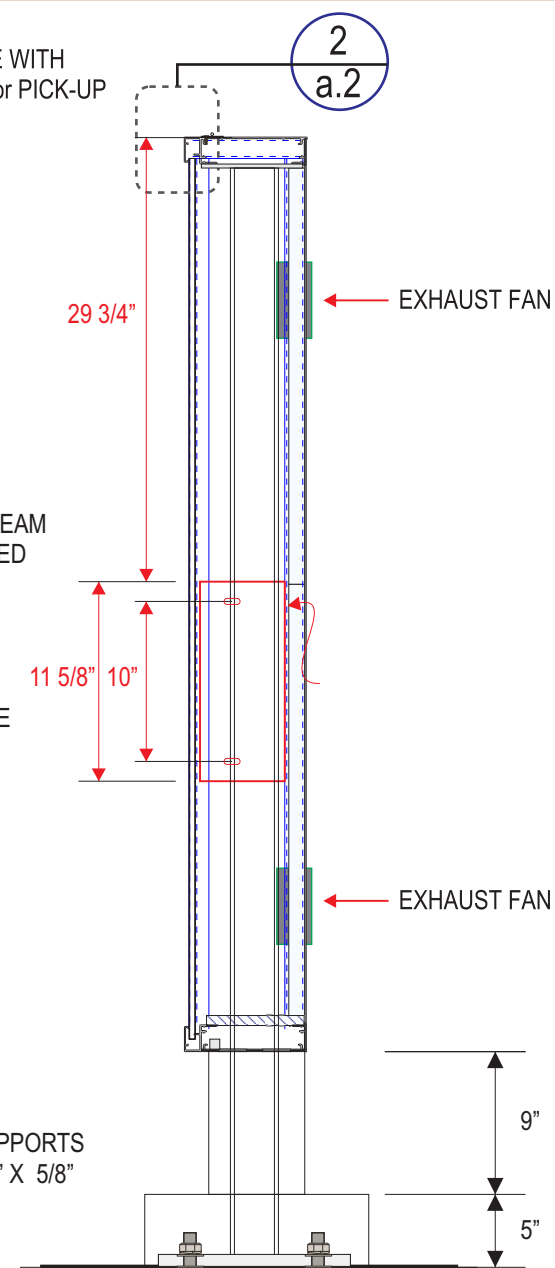
DRAWING NAME



1 MENU SIGN FRAME - ELEVATION  
SCALE - 1" = 1'-0"



3 MOUNTING DETAILS to CONCRETE FOOTING  
PLAN VIEW: 1" = 1'-0"



**ELECTRICAL REQUIREMENTS:**  
 - 3AMPS @ 120V FOR MENU BOARD  
 - 1.8 AMPS @ 120 V FOR ORDER CONFIRMATION SCREEN

ARTWORK EXCLUSIVE PROPERTY OF  
 SINCE 1917

**MANDEVILLE SIGN**  
*making your mark.*

676 GEORGE WASHINGTON HIGHWAY  
 LINCOLN, RI 02865-4255

401-334-9100 401-334-7799  
 PHONE FAX

www.mandevillesign.com  
 WEB

**APPROVALS**  
*Signatures Required Before Release to Production*

Engineering	BY	DATE
Sales	BY	DATE
Estimating	BY	DATE
Production	BY	DATE
Quality Control	BY	DATE

**REVISIONS**

NO.	BY	DESCRIPTION	DATE
1	WD	update to new logo standards	08/27/19
2	GC	updated to current standards	04/13/22
3	GC	updated logo	06/16/22
4			
5			
6			
7			
8			
9			
10			

All electrical signs shall comply with the National Electric Code (Article 600) and be manufactured according to Underwriters Laboratories U.L. 48 standards and labeled accordingly.

31984-1

CUSTOMER

STORE NUMBER 2461

DILLON, CO

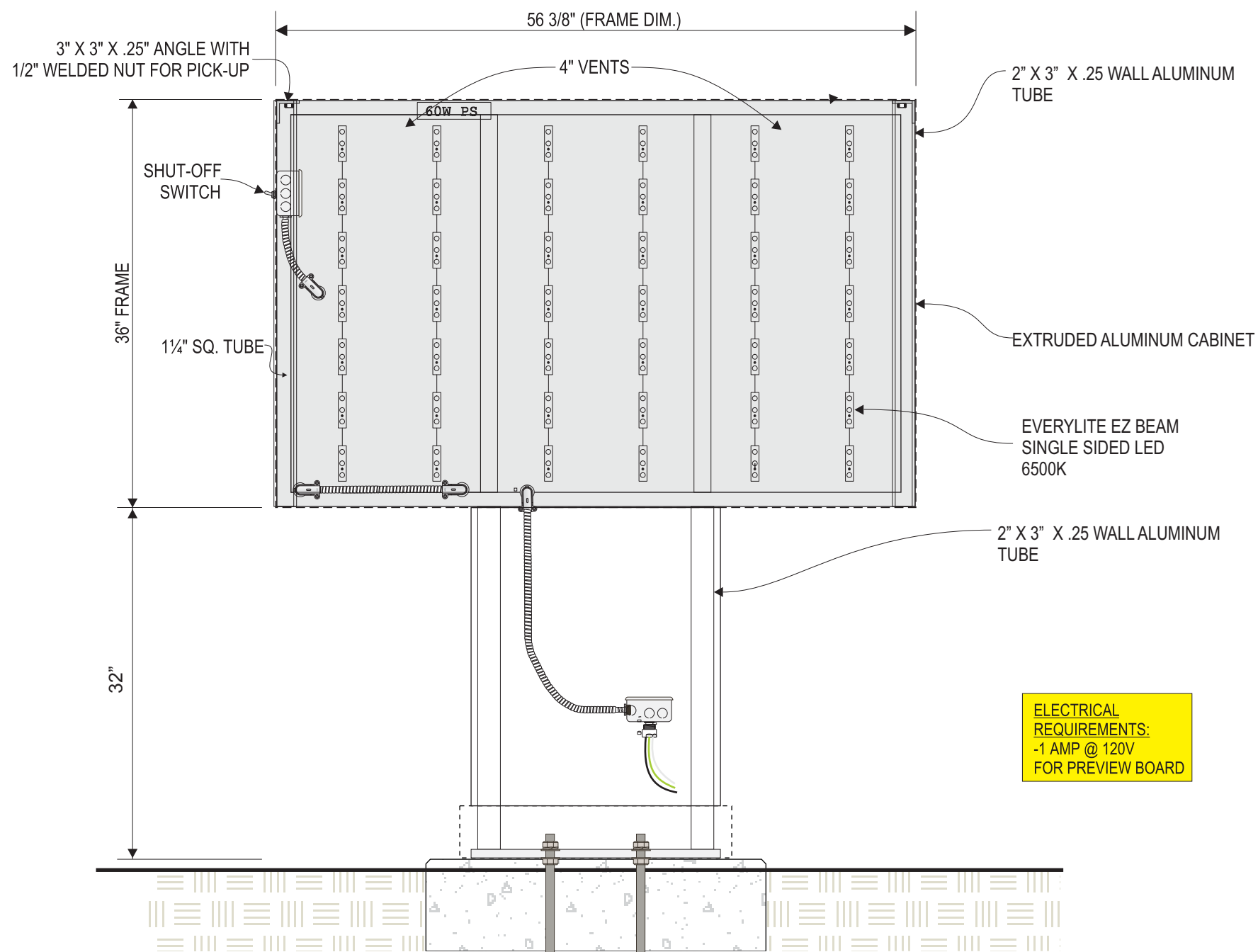
LOCATION

PROJECT MANAGER Carla M.

WD 01/23/19  
 ARTIST DATE

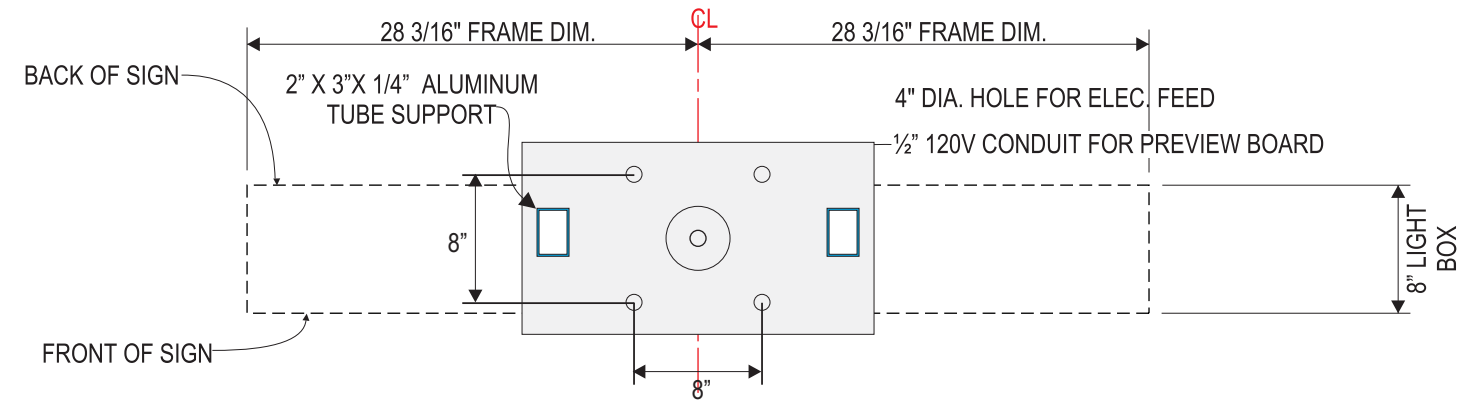
31984.11

DRAWING NAME

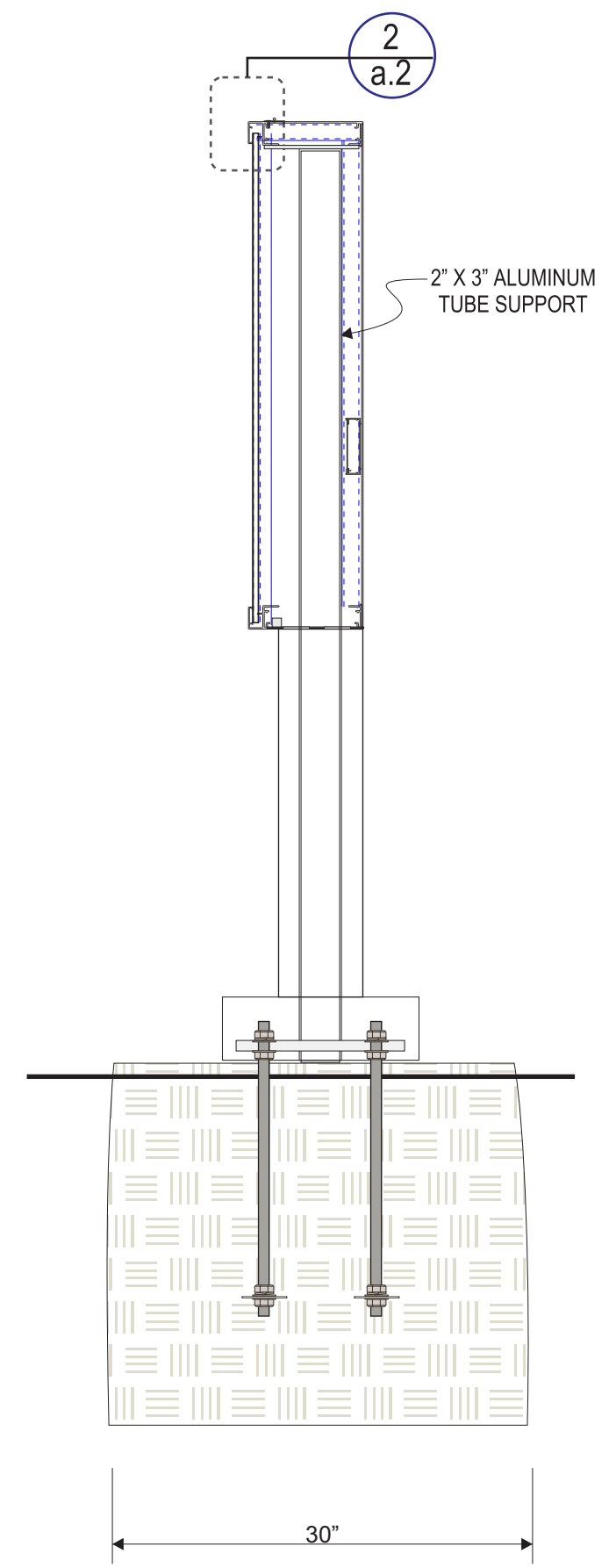


1 PREVIEW SIGN FRAME - ELEVATION  
SCALE - 1" = 1'-0"

**ELECTRICAL REQUIREMENTS:**  
-1 AMP @ 120V  
FOR PREVIEW BOARD



3 MOUNTING DETAILS to CONCRETE FOOTING  
PLAN VIEW: 1" = 1'-0"



2 MENU SIGN SECTION  
SCALE - 1" = 1'-0"

ARTWORK EXCLUSIVE PROPERTY OF  
SINCE 1917

**MANDEVILLE SIGN**  
making your mark.

676 GEORGE WASHINGTON HIGHWAY  
LINCOLN, RI 02865-4255

401-334-9100 401-334-7799  
PHONE FAX

www.mandevillesign.com  
WEB

**APPROVALS**  
*Signatures Required Before Release to Production*

Engineering	BY	DATE
Sales	BY	DATE
Estimating	BY	DATE
Production	BY	DATE
Quality Control	BY	DATE

PDF NAME

**REVISIONS**

NO.	BY	DESCRIPTION	DATE
1	WD	update to new logo standards	08/27/19
2	GC	updated to current standards	04/13/22
3	GC	updated logo	06/16/22
4			
5			
6			
7			
8			
9			
10			

All electrical signs shall comply with the National Electric Code (Article 600) and be manufactured according to Underwriters Laboratories U.L. 48 standards and labeled accordingly.

31984-1

CUSTOMER

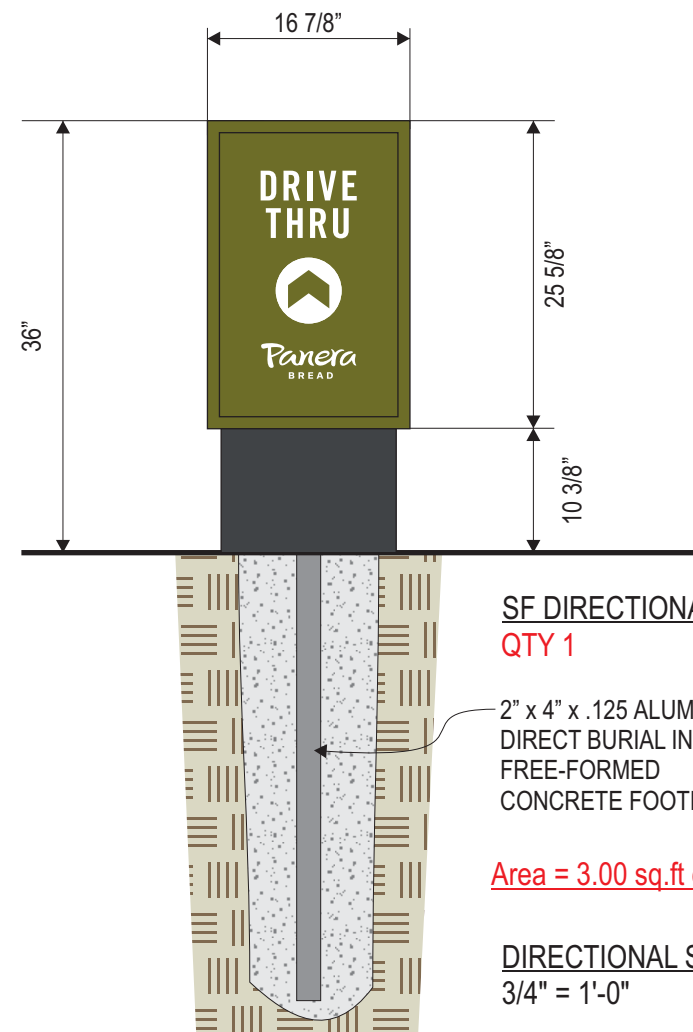
STORE NUMBER 2461

LOCATION DILLON, CO

PROJECT MANAGER Carla M.

WD 01/23/19  
ARTIST DATE

31984.12  
DRAWING NAME

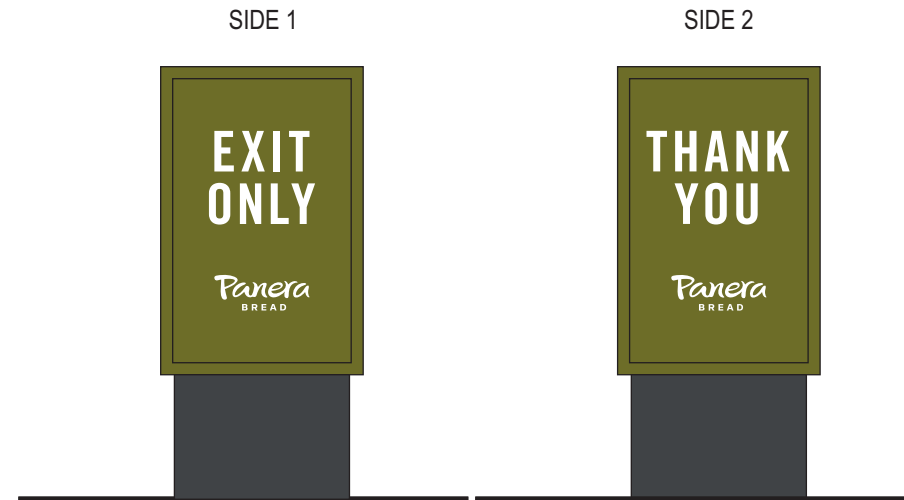


SF DIRECTIONAL SIGN  
QTY 1

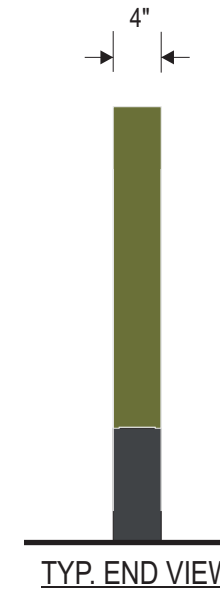
2" x 4" x .125 ALUMINUM TUBE  
DIRECT BURIAL IN  
FREE-FORMED  
CONCRETE FOOTING

Area = 3.00 sq.ft each

DIRECTIONAL SIGNS  
3/4" = 1'-0"



DF DIRECTIONAL SIGN  
QTY 1



TYP. END VIEW

**ILLUMINATED DIRECTIONAL SIGNS**

- 4" DEEP ALUM. PANEL CONSTRUCTION PAINTED TO MATCH PANTONE 2307 C (STAIN FINISH)
- WHITE LEXAN FACES
- DIGITALLY PRINTED GRAPHICS ON FACES (VINYL)
- COLORS AS SHOWN: WHITE & PMS 7403U PEACH & PANTONE 2410 C
- WHITE LED LIGHTING
- PANTONE 7540 SHROUD WITH 2" x 2" x 1/8" WALL ALUM. SQ. TUBE POSTS
- DIRECT BURIAL IN FREE-FORMED CONCRETE FOOTING



DF DIRECTIONAL SIGN  
QTY 1

**MANDEVILLE SIGN**  
making your mark.  
676 GEORGE WASHINGTON HIGHWAY  
LINCOLN, RI 02865-4255  
401-334-9100 401-334-7799  
PHONE FAX  
www.mandevillesign.com  
WEB

**APPROVALS**  
*Signatures Required Before Release to Production*

Engineering	BY	DATE
Sales	BY	DATE
Estimating	BY	DATE
Production	BY	DATE
Quality Control	BY	DATE

PDF NAME

**REVISIONS**

NO.	BY	DESCRIPTION	DATE
1	JM	added directional sign	01/29/19
2	WD	rev. to illuminated	04/22/19
3	WD	corp. logo updates	08/27/19
4	GC	updated to current standards	04/13/22
5	GC	new directional signs	06/16/22
6	GC	REVISED TO ILLUMINATED	08/31/22
7			
8			
9			
10			

All electrical signs shall comply with the National Electric Code (Article 600) and be manufactured according to Underwriters Laboratories U.L. 48 standards and labeled accordingly.

31984-1



CUSTOMER

STORE NUMBER 2461

DILLON, CO

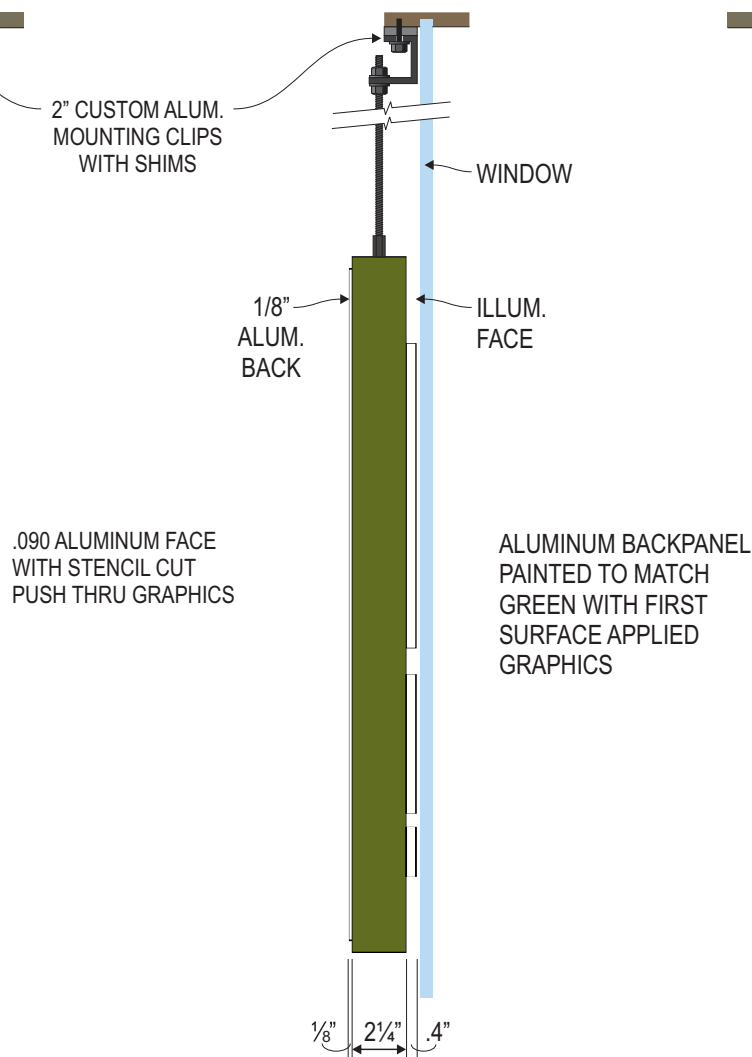
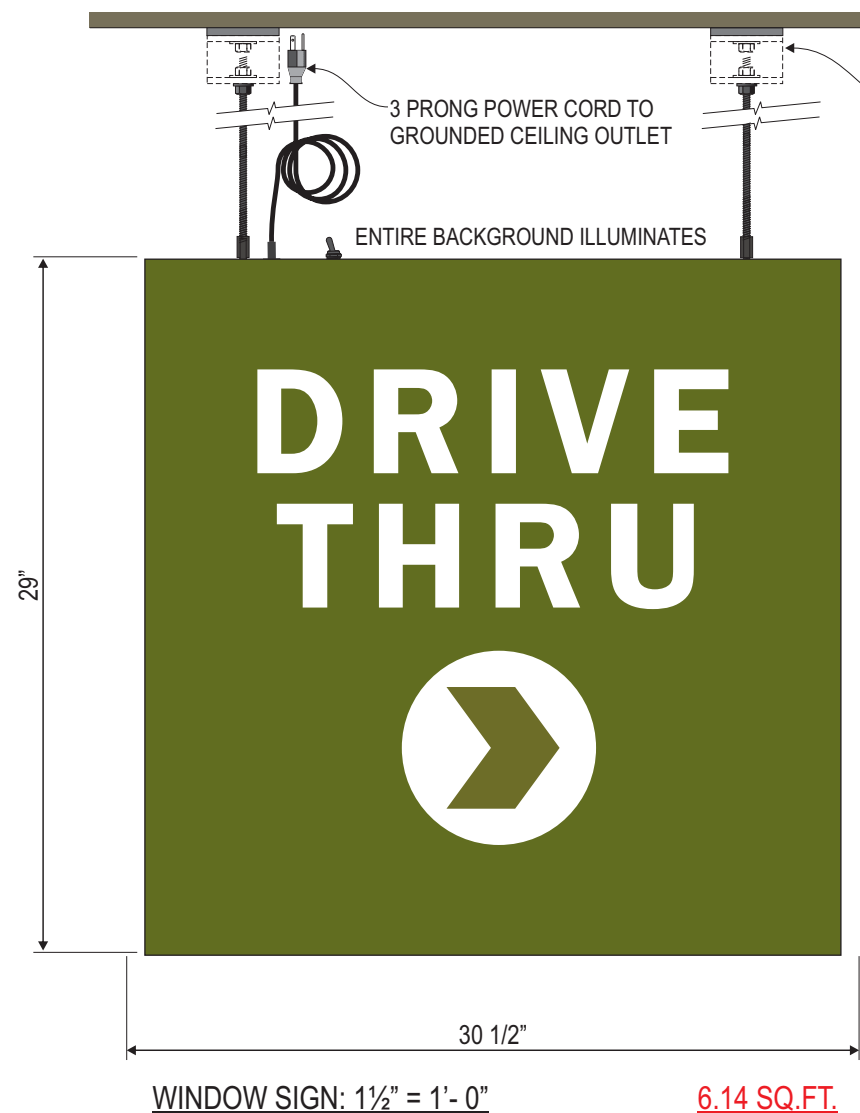
LOCATION

PROJECT MANAGER Carla M.

WD 01/23/19  
ARTIST DATE

31984.13

DRAWING NAME



**SW103.A1**

**(1) 29" X 29" X 2 7/8" DEEP D/F INTERIOR ILLUMINATED HANGING WINDOW SIGN.**

- FACE IS ILLUMINATED AND BACK IS REMOVABLE AND OPAQUE.
- 60 WATT SELF CONTAINED POWER SUPPLY.
- SWITCH AND 6'-7" 3 PRONG POWER CORD OUT TOP.
- SUPPLY (2) 6' LENGTHS OF 1/4-20 BLACK OXIDE THREADED ROD AND (2) ALUMINUM PAINTED ANGLE CLIPS FOR INSTALLATION.

**FACE SPECS:**

- .125 Aluminum with stencil cut push thru copy. Face painted to match Pantone 2307 C
- DRIVE THRU with ARROW be backed up with white diffuser vinyl second surface

**BACK SPECS:**

- 1/8" Thick Aluminum Back.
- Secure to the Frame with 8-32 x 1/2" Long Flat Head Brass Sheet Metal Screws.
- Paint Back Side of Aluminum Back ZAP White.
- Paint Face and Edge of Pantone 2307 C
- 1st Surface Digitally Printed Vinyl Graphics with Satin Overlaminates, All Cut with Background Removed.

**FRAME SPECS:**

- 2 1/4" x 1 1/4", Finished OD, x 1/8" Brakeformed Aluminum Channel Frame.
- Install Toggle Switch to Right of Cord Grip 1 1/2"±.
- PRINCIPAL PL-QPLOP2PD2 PODS 7000K LEDS on the Inside of the End and Bottom Fillers Only on 3"± Centers.
- (1) 60 Watt Class 2 Power Supply mounted to Aluminum Plate w/ (2) 6-32 x 1/2" Welded Studs. Plate is Spot Welded into the Top Channel.
- 120 VAC / .1 Amp.
- Continuous Brake Formed .040 White Aluminum Raceway Cover secured to the Back Flange with Flat Head Screws.
- Paint the Outside MP29527 Midsummer Night per Formula, Satin Finish.

**PANERA GREEN**  
 PANTONE 2307 C  
 C32 M2 Y100 K61  
 R104 G111 B18  
 HEX #686F12

PANTONE 476 CP  
 CMYK: 30 / 71 / 75 / 81  
 RGB: 84 / 60 / 46  
 HEX: 543C2E  
 TRANSLUCENT

**SUN DAPPLE**  
 PANTONE 7403 C  
 C5 M15 Y55 K0  
 R238 G212 B132  
 HEX #EED484



**MANDEVILLE SIGN**  
*making your mark.*  
 676 GEORGE WASHINGTON HIGHWAY  
 LINCOLN, RI 02865-4255  
 401-334-9100 401-334-7799  
 PHONE FAX  
 www.mandevillesign.com  
 WEB

**APPROVALS**  
*Signatures Required Before Release to Production*

Engineering	BY	DATE
Sales	BY	DATE
Estimating	BY	DATE
Production	BY	DATE
Quality Control	BY	DATE

**REVISIONS**

NO.	BY	DESCRIPTION	DATE
1	WD	update to new logo standards	08/27/19
2	GC	updated to current standards	04/13/22
3	GC	updated logo	06/16/22
4			
5			
6			
7			
8			
9			
10			

All electrical signs shall comply with the National Electric Code (Article 600) and be manufactured according to Underwriters Laboratories U.L. 48 standards and labeled accordingly.

**31984-1**



CUSTOMER

**2461**

STORE NUMBER

**DILLON, CO**

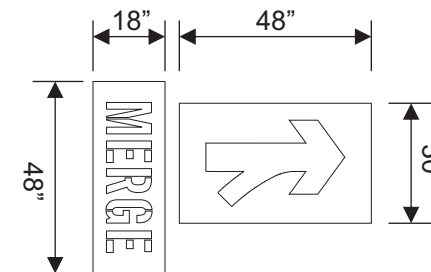
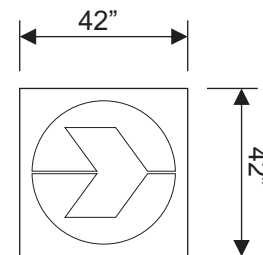
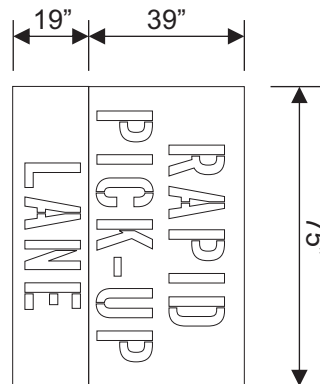
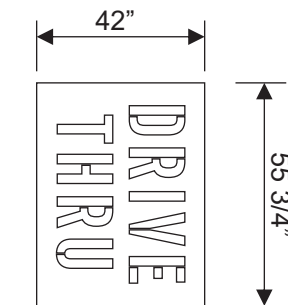
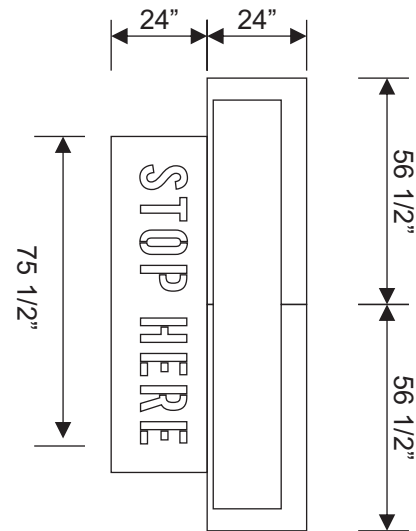
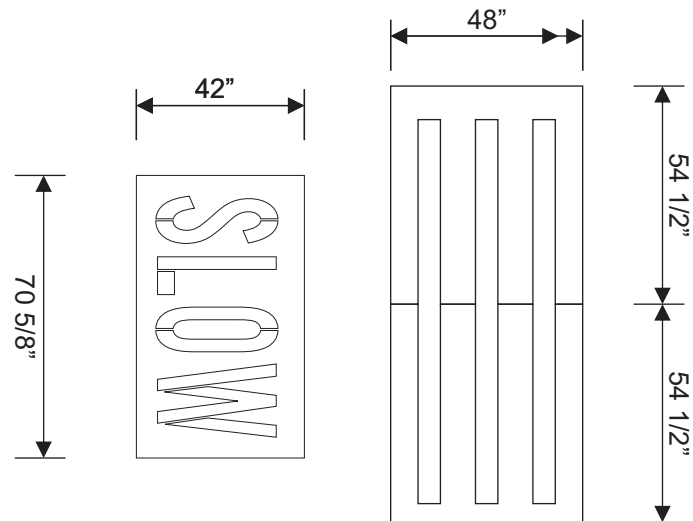
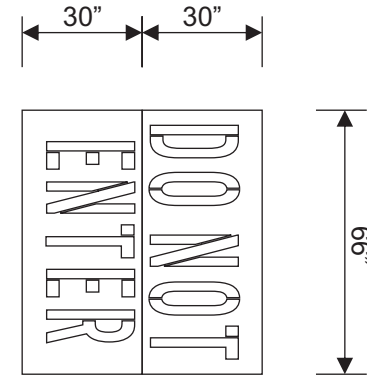
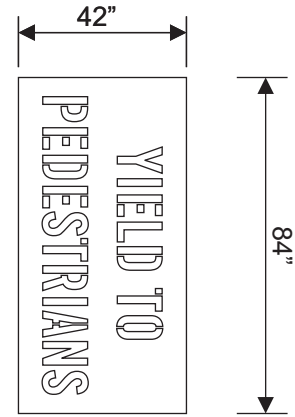
LOCATION

PROJECT MANAGER **Carla M.**

WD 01/23/19  
 ARTIST DATE

**31984.14**

DRAWING NAME



SCALE: 1/4"=1'-0"



**MANDEVILLE SIGN**  
making your mark.

676 GEORGE WASHINGTON HIGHWAY  
LINCOLN, RI 02865-4255

401-334-9100 401-334-7799  
PHONE FAX

WEB [www.mandevillesign.com](http://www.mandevillesign.com)

**APPROVALS**  
*Signatures Required Before Release to Production*

Engineering	
BY	DATE
Sales	
BY	DATE
Estimating	
BY	DATE
Production	
BY	DATE
Quality Control	
BY	DATE

PDF NAME

**REVISIONS**

NO.	BY	DESCRIPTION	DATE
1	WD	update to new logo standards	08/27/19
2	GC	updated to current standards	04/13/22
3	GC	added stencil set	06/16/22
4			
5			
6			
7			
8			
9			
10			

All electrical signs shall comply with the National Electric Code (Article 600) and be manufactured according to Underwriters Laboratories U.L. 48 standards and labeled accordingly.

31984-1



CUSTOMER

2461

STORE NUMBER

DILLON, CO

LOCATION

PROJECT MANAGER Carla M.

WD 01/23/19  
ARTIST DATE

31984.15

DRAWING NAME

SW401.A1

DRIVE  
THRU

SW403.B1

DRIVE  
THRU



SW406.A1



SW407.A1

MERGE



SW402.A1

RAPID  
PICK-UP  
LANE

SW404.B1

RAPID  
PICK-UP



MERGE



DRIVE THRU LANES (PAVEMENT)

SCALE: 1/4"=1'-0"

ALL COPY  
TO BE PAINTED WHITE

Arrows can be  
rotated for left and  
right options

Graphics meant for Panera Drive-Thru/  
RPU lanes only. Not to be used for  
General Site markings

ARTWORK EXCLUSIVE PROPERTY OF  
SINCE 1917



MANDEVILLE SIGN  
making your mark.

676 GEORGE WASHINGTON HIGHWAY  
LINCOLN, RI 02865-4255

401-334-9100 401-334-7799  
PHONE FAX

WEB www.mandevillesign.com

APPROVALS

Signatures Required Before Release to Production

Engineering	
BY	DATE
Sales	
BY	DATE
Estimating	
BY	DATE
Production	
BY	DATE
Quality Control	
BY	DATE

PDF NAME

REVISIONS

NO.	BY	DESCRIPTION	DATE
1	WD	update to new logo standards	08/27/19
2	GC	updated to current standards	04/13/22
3	GC	added stencil set	06/16/22
4			
5			
6			
7			
8			
9			
10			

All electrical signs shall comply with the National  
Electric Code (Article 600) and be manufactured  
according to Underwriters Laboratories U.L. 48  
standards and labeled accordingly.

31984-1



CUSTOMER

2461

STORE NUMBER

DILLON, CO

LOCATION

Carla M.

PROJECT MANAGER

WD 01/23/19  
ARTIST DATE

31984.16

DRAWING NAME



SW408.A1

SW405.A1



SW409.A1

DRIVE THRU LANES (PAVEMENT)

SW405.A1

SCALE: 1/4"=1'-0"

Arrows can be rotated for left and right options



BARS TO BE PAINTED TO MATCH PANTONE 2307C

ALL OTHER COPY TO BE PAINTED WHITE

Graphics meant for Panera Drive-Thru/RPU lanes only. Not to be used for General Site markings



MANDEVILLE SIGN making your mark.

676 GEORGE WASHINGTON HIGHWAY LINCOLN, RI 02865-4255

401-334-9100 401-334-7799 PHONE FAX

www.mandevillesign.com WEB

APPROVALS

Signatures Required Before Release to Production

Engineering	BY	DATE
Sales	BY	DATE
Estimating	BY	DATE
Production	BY	DATE
Quality Control	BY	DATE

PDF NAME

REVISIONS

NO.	BY	DESCRIPTION	DATE
1	WD	update to new logo standards	08/27/19
2	GC	updated to current standards	04/13/22
3	GC	added stencil set	06/16/22
4			
5			
6			
7			
8			
9			
10			

All electrical signs shall comply with the National Electric Code (Article 600) and be manufactured according to Underwriters Laboratories U.L. 48 standards and labeled accordingly.

31984-1



CUSTOMER

2461

STORE NUMBER

DILLON, CO

LOCATION

Carla M.

PROJECT MANAGER

WD 01/23/19 ARTIST DATE

31984.17

DRAWING NAME