

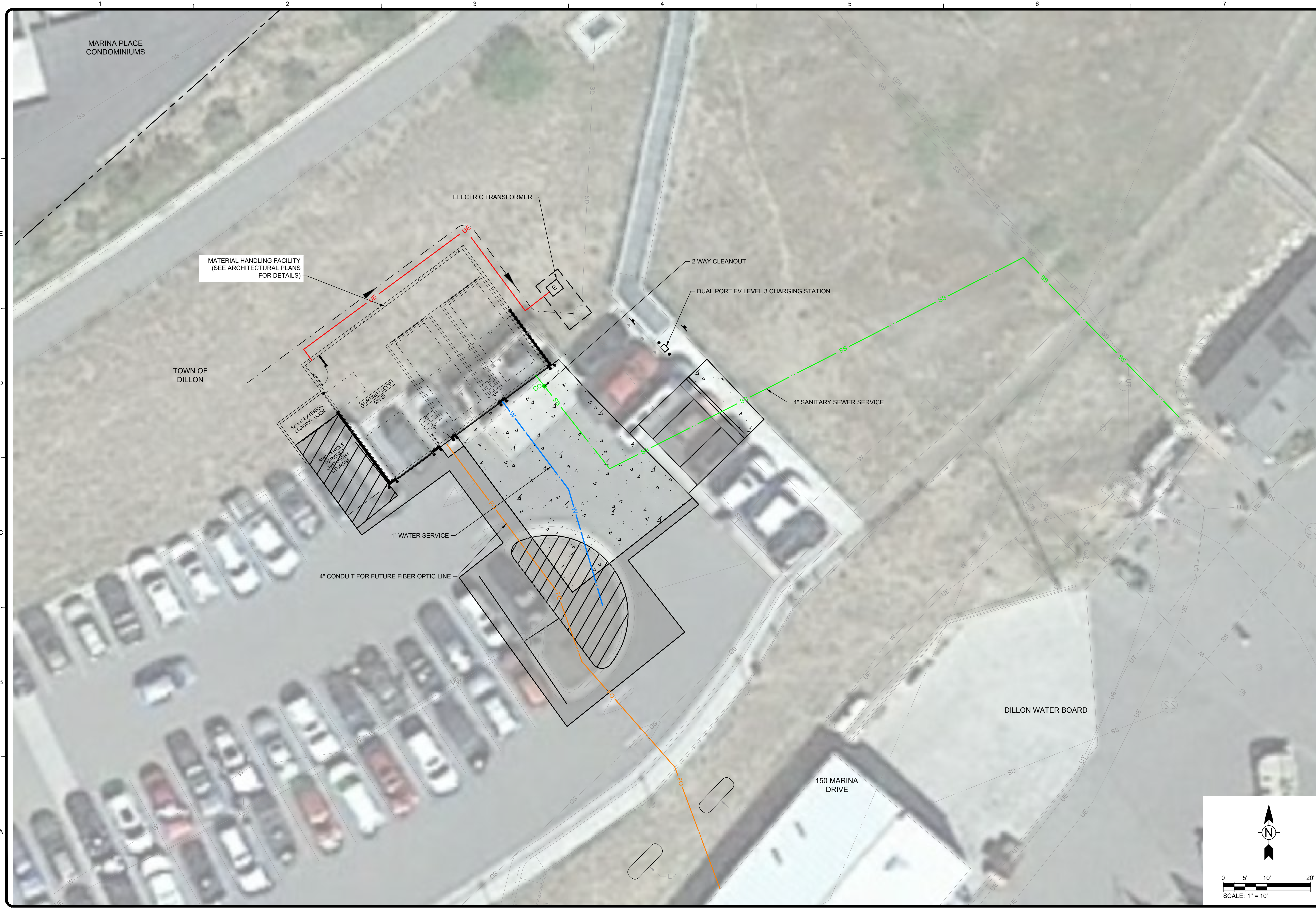
MARK	DATE	DESCRIPTION	BY
	08/01/23	CONCEPTUAL DESIGN	

TOWN OF DILLON
MATERIAL HANDLING FACILITY
CIVIL SITE PLAN

PROJ: 200-43706-23002
DES: KJC
DRWN: AJK
CHKD: CDD
C-102

TETRA TECH
www.tetra.tech.com
719F TEN MILE DRIVE, PO BOX 1906
FRISCO, CO 80443
970.423.9420

9/1/2023 5:23:12 PM - O:\PROJECTS\BRECKENRIDGE\43706\200-43706-23002\CAD\SHEETFILES\C104 COMPOSITE UTILITY PLAN.DWG - CROSS, KYLE

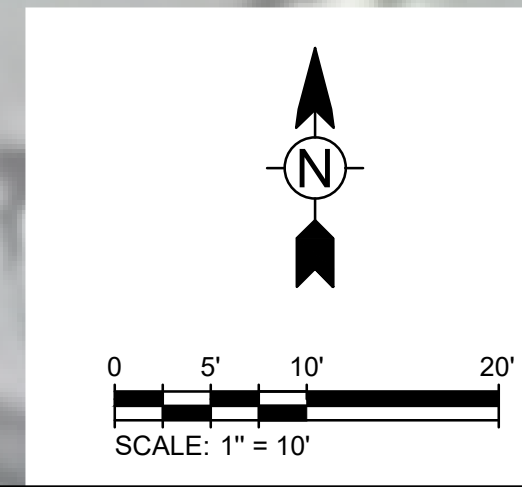


MARK	DATE	DESCRIPTION	BY
	08/01/23	CONCEPTUAL DESIGN	

TOWN OF DILLON
MATERIAL HANDLING FACILITY
COMPOSITE UTILITY PLAN

PROJ:	200-43706-23002
DESN:	KJC
DRWN:	AJK
CHKD:	CDD

C-104



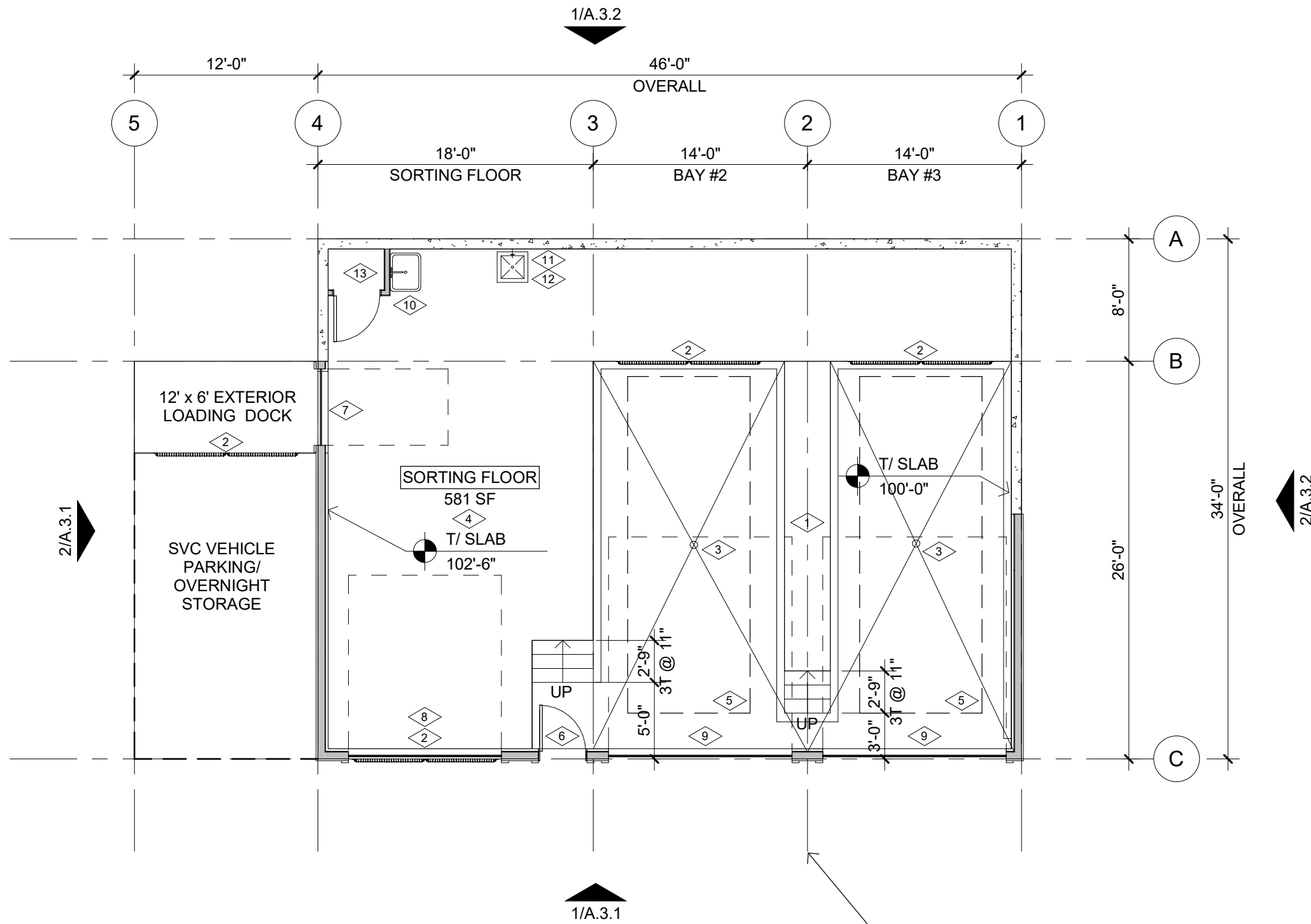
Bar Measures 1 inch, otherwise drawing not to scale

FLOOR PLAN KEY NOTES

- 1 36" W EXPANDED STEEL CATWALK BETWEEN BAYS 2 & 3
- 2 TRUCK BUMPERS @ TOP OF WALL
- 3 SLOPE 1/8" PER FT MIN TO FLOOR DRAIN
- 4 SLOPE SORTING FLOOR 1/8" PER FT MIN TOWARDS BAY 2
- 5 30 YD DUMPSTER - 8' x 22'
- 6 3' W x 8' H SWING DOOR W/ TRANSOM WDW ABOVE
- 7 8' H x 5' W OVERHEAD DOOR
- 8 12' 6" H x 10' W OVERHEAD DOOR
- 9 14' H x 12" W OVERHEAD DOOR
- 10 HANDWASH/ EYEWASH STATION
- 11 MOPSINK
- 12 WALL MOUNTED CONNECTION POINT FOR HIGH PRESSURE WASH EQUIPMENT
- 13 3' x 4' ELECTRICAL/ COMMS CLOSET

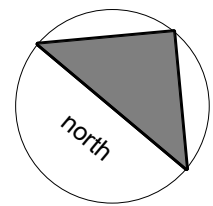
	AREA (SF)
MAIN FLOOR	1,564

building area calcs
* SEE PLANS FOR SORTING FLOOR SF



NOTE: FRP @ INTERIOR WALL FINISH FOR WASHDOWN - TYP ALL WALLS

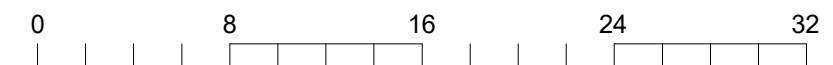
LOCATE BUILDING SO GRID LINE 2 CENTERS ON MIDDLE OF PARKING LOT (RE: CIVIL)



main floor plan

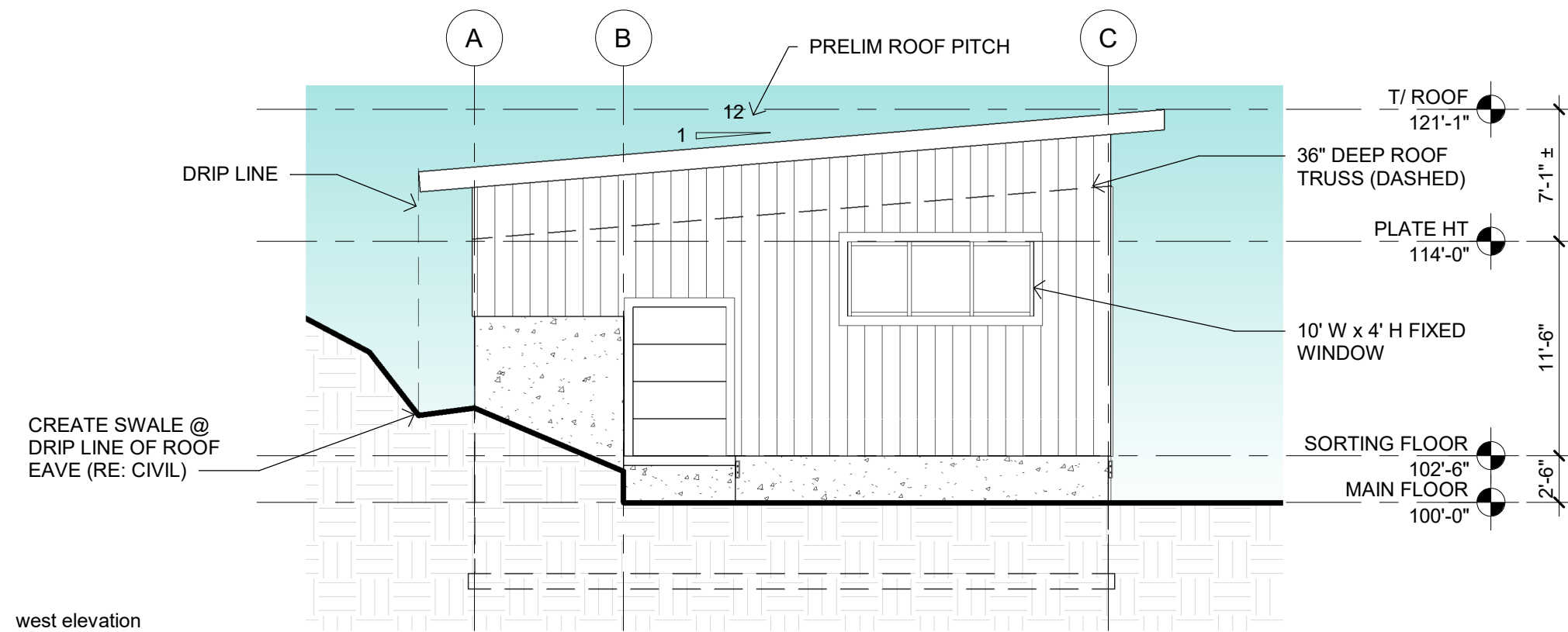
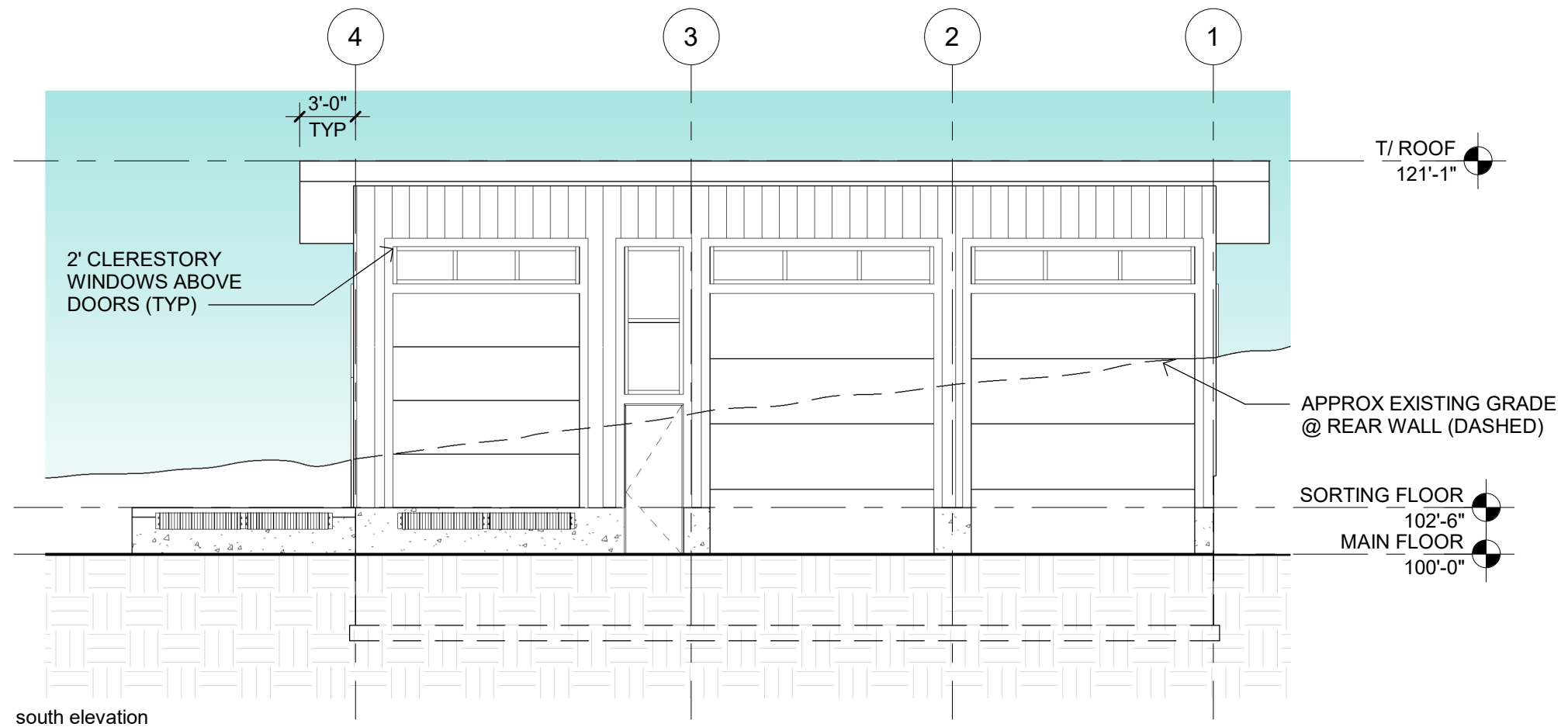
dillon material handling facility . dillon . colorado

draft date: 17 august 2023
scale: 1/8" = 1'-0"



I:\stais\architects.com\share\nick\Documents\Dillon MHF R23_nickZSLP.O.rvt

8/30/2023 9:55:54 AM



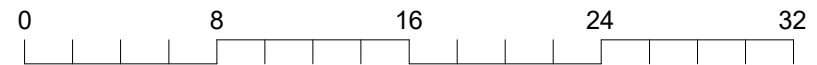
elevations

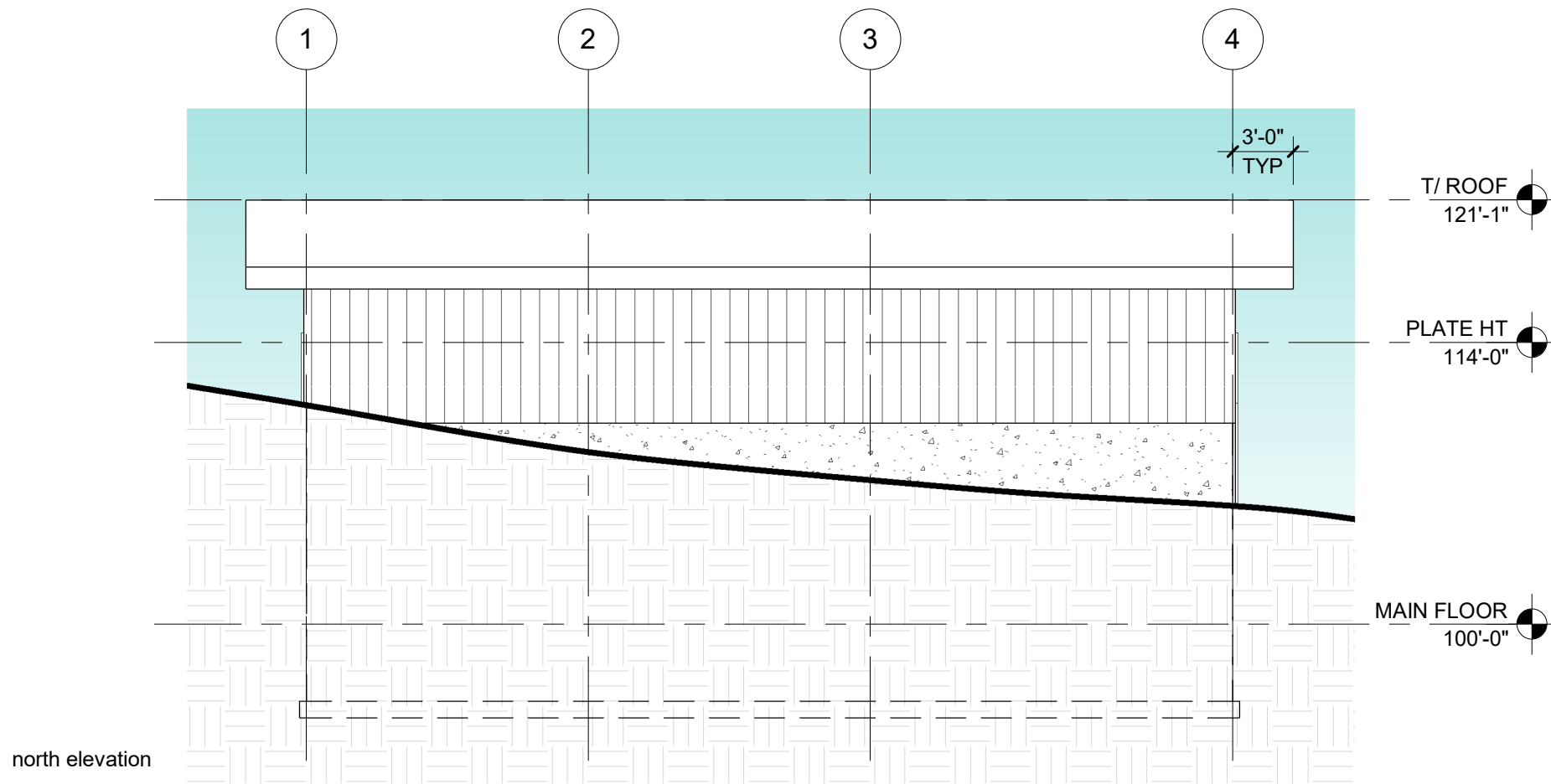
dillon material handling facility . dillon . colorado

draft

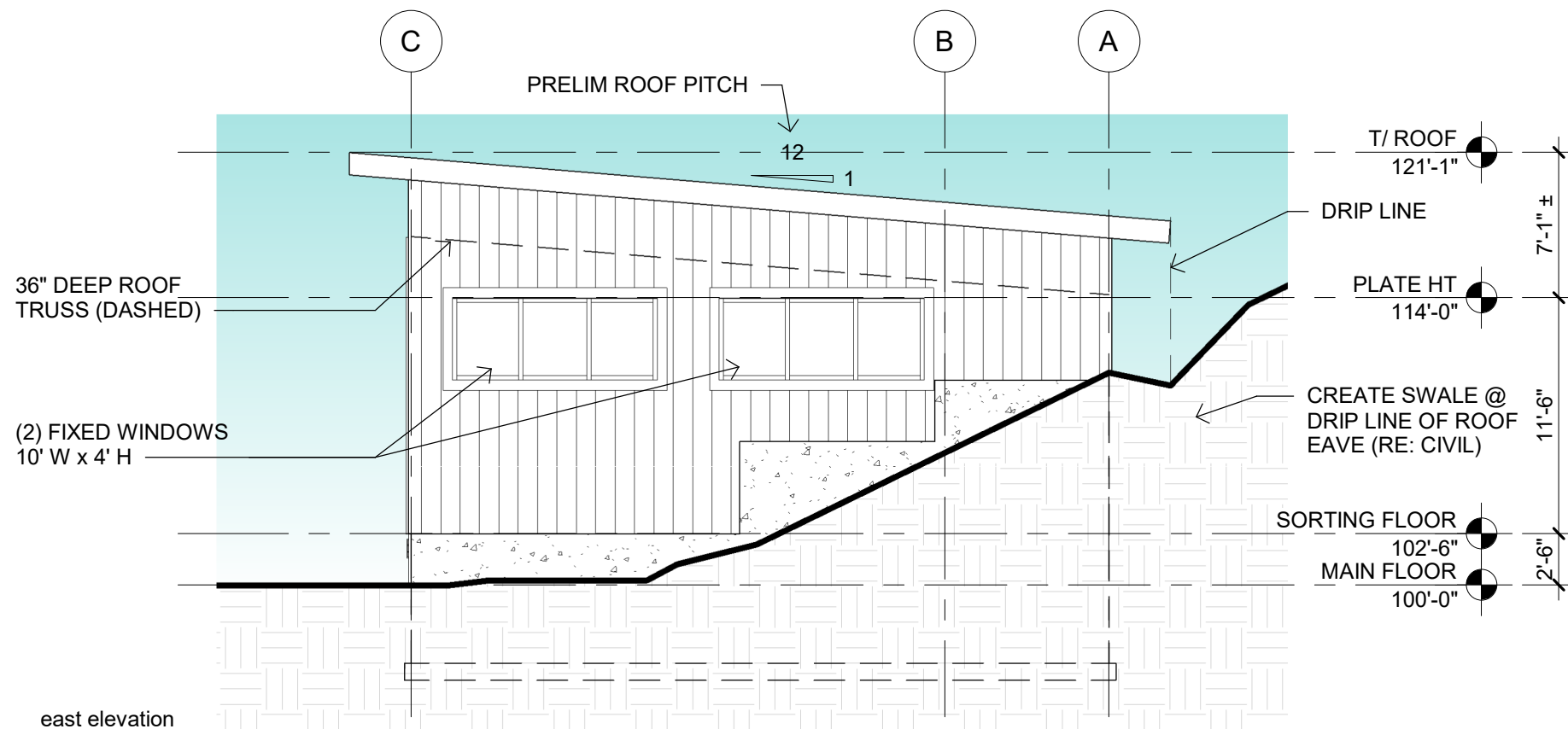
date: 17 august 2023

scale: 1/8" = 1'-0"





north elevation



east elevation

elevations

dillon material handling facility . dillon . colorado

draft

date: 17 august 2023

scale: 1/8" = 1'-0"

