

DRAWINGS ARE PART OF A CONSTRUCTION DOCUMENT SET FOR ADDITIONS/ALTERATIONS TO THE WHOLE BUILDING BY BOLLAR & ASSOCIATES ARCHITECTS DATED 7/25/01; THEY DO NOT REPRESENT AS-BUILT CONDITIONS

EXTERIOR DOORS TO DROP OFF LAKE FROM CHURCH LOBBY

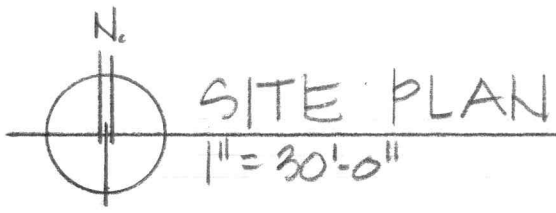
LOCATION OF BASEMENT LEVEL (HATCHED)

BASEMENT LEVEL EXIT DOOR FROM CLASSROOM WING

NOTE: THESE PLAN DRAWINGS ARE PART OF A CODE STUDY PACKAGE FOR CHANGE OF OCCUPANCY CLASSIFICATION DATED 10/11/22.

EXTER DOORS TO H.V. PARKING FROM CHURCH LOBBY

BASEMENT LEVEL ENTRY/EXIT DOOR ACCESS



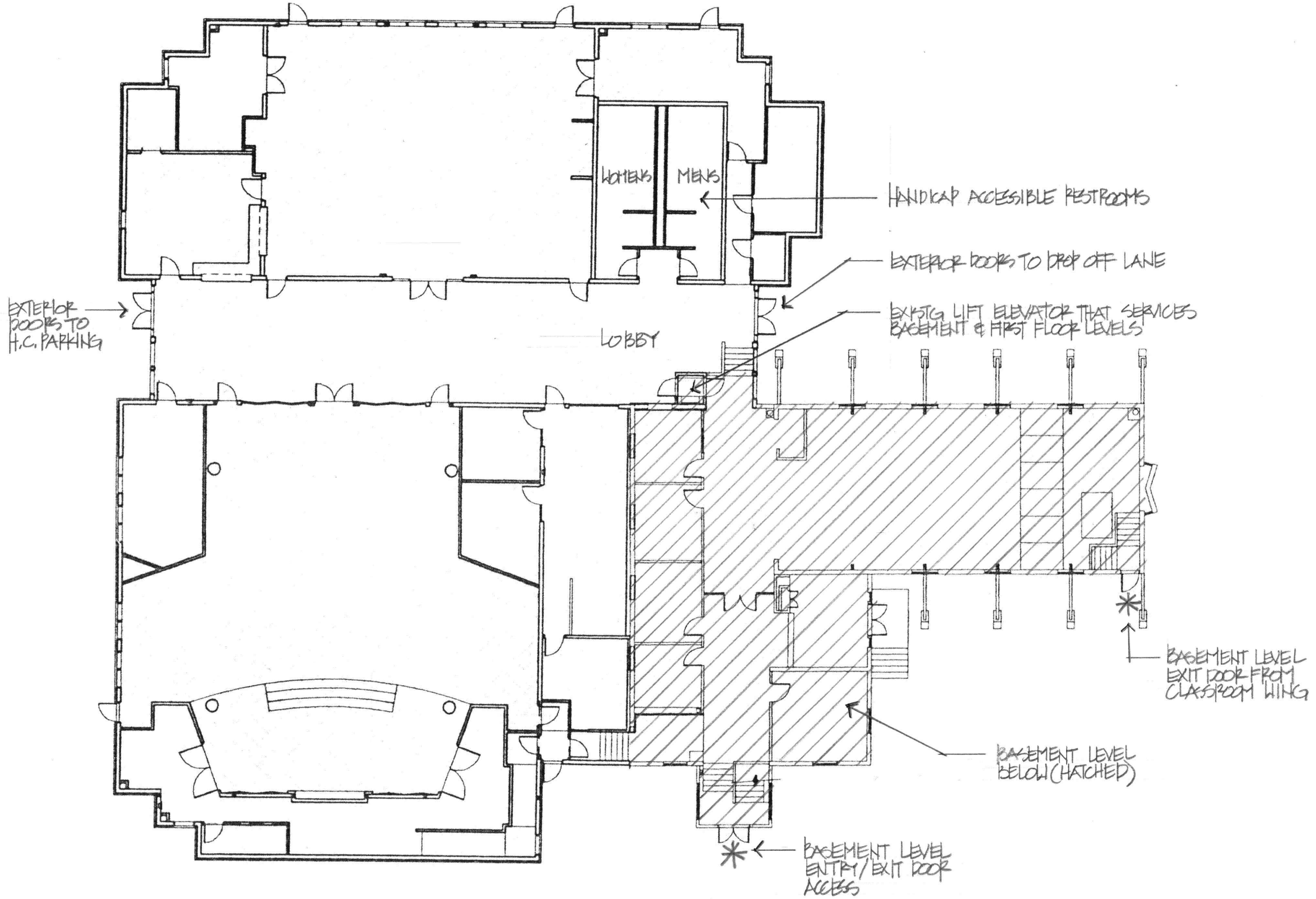
8864 s. indian creek street, highlands ranch, co. 80126
970.389.0492 jerry@jwaarchitecture.net

DILLON COMMUNITY CHURCH
CHRISTIAN SCHOOL CODE STUDY

371 E. La BONTE STREET
PORTION OF LOTS 6 & 7, LOT M, NEW TOWN SUB
DILLON, SUMMIT COUNTY, COLORADO

FINAL 10/11/22

1 OF 4



N
 MASTER PLAN - FIRST FLOOR LEVEL
 1/16" = 1'-0"

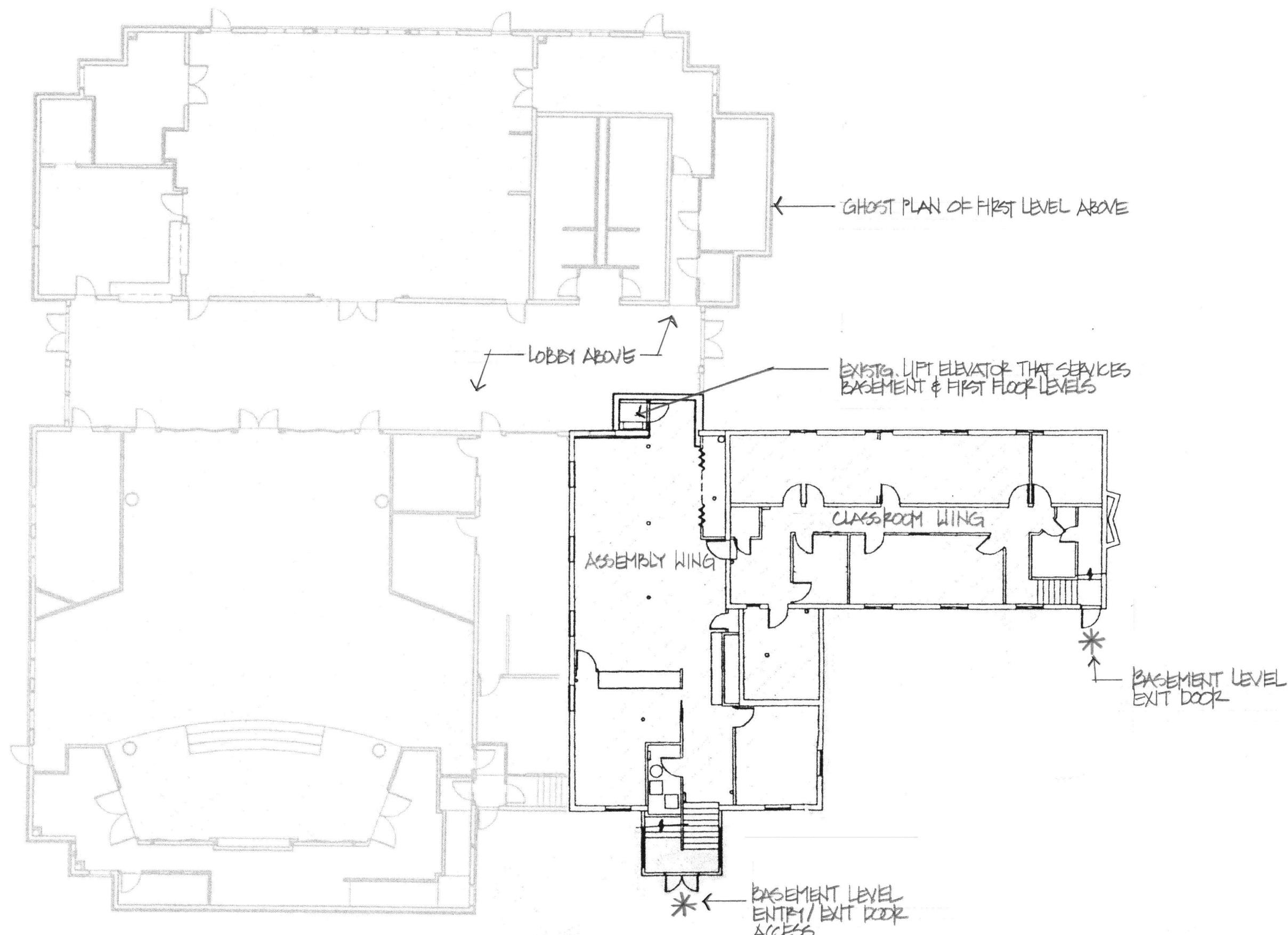



8864 s. indian creek street, highlands ranch, co. 80126
 970.389.0492 jerry@jwarchitecture.net

DILLON COMMUNITY CHURCH
 CHRISTIAN SCHOOL CODE STUDY
 371 E. La BONTE STREET
 PORTION OF LOTS 6 & 7, LOT M, NEW TOWN SUB
 DILLON, SUMMIT COUNTY, COLORADO

FINAL 10/11/22

2
 of 4




 MASTER PLAN - BASEMENT FLOOR LEVEL
 1/16" = 1'-0"

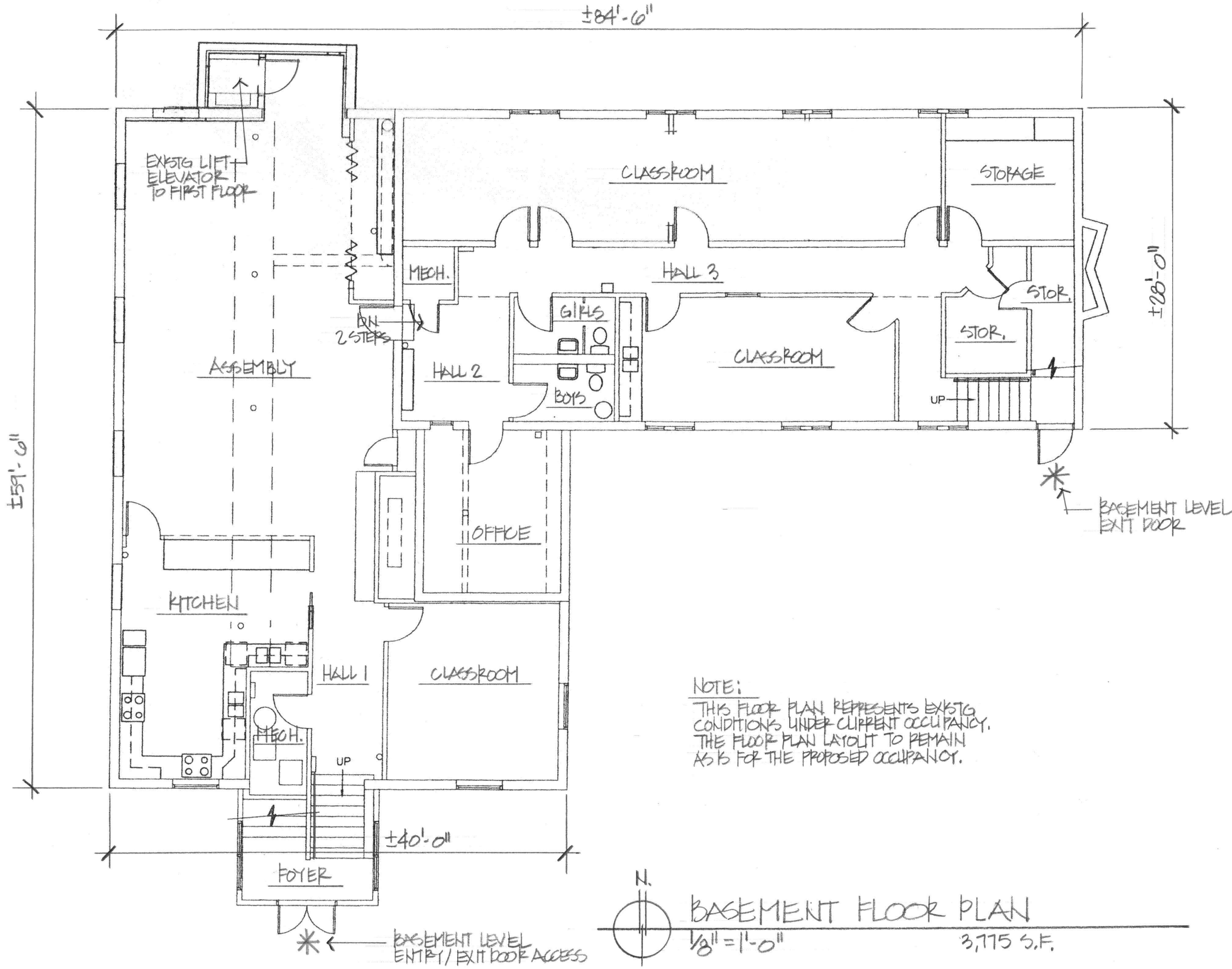


8864 s. indian creek street, highlands ranch, co. 80126
 970.389.0492 jerry@jwarchitecture.net

**DILLON COMMUNITY CHURCH
 CHRISTIAN SCHOOL CODE STUDY**

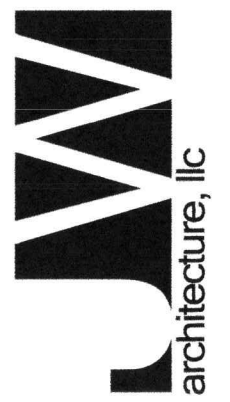
371 E. La BONTE STREET
 PORTION OF LOTS 6 & 7, LOT M, NEW TOWN SUB
 DILLON, SUMMIT COUNTY, COLORADO

FINAL 10/11/02



NOTE:
 THIS FLOOR PLAN REPRESENTS EXISTING
 CONDITIONS UNDER CURRENT OCCUPANCY.
 THE FLOOR PLAN LAYOUT TO REMAIN
 AS IS FOR THE PROPOSED OCCUPANCY.

BASEMENT FLOOR PLAN
 3,775 S.F.


8864 s. indian creek street, highlands ranch, co. 80126 970.389.0492 jerry@jwarchitecture.net
DILLON COMMUNITY CHURCH CHRISTIAN SCHOOL CODE STUDY 371 E. La BONTE STREET PORTION OF LOTS 6 & 7, LOT M, NEW TOWN SUB DILLON, SUMMIT COUNTY, COLORADO
FINAL 10/11/22
4
CF:4

DRAWINGS ARE PART OF A CONSTRUCTION DOCUMENT SET FOR ADDITIONS/ALTERATIONS TO THE WHOLE BUILDING BY BOLLAR & ASSOCIATES ARCHITECTS DATED 7/25/01; THEY DO NOT REPRESENT AS-BUILT CONDITIONS

EXTER DOORS TO H.C. PARKING FROM CHURCH LOBBY

EXTERIOR DOORS TO DROP OFF LANE FROM CHURCH LOBBY

TRAFFIC OUT

BUBBLED NOTES ARE RELATED TO HANDICAP ACCESS

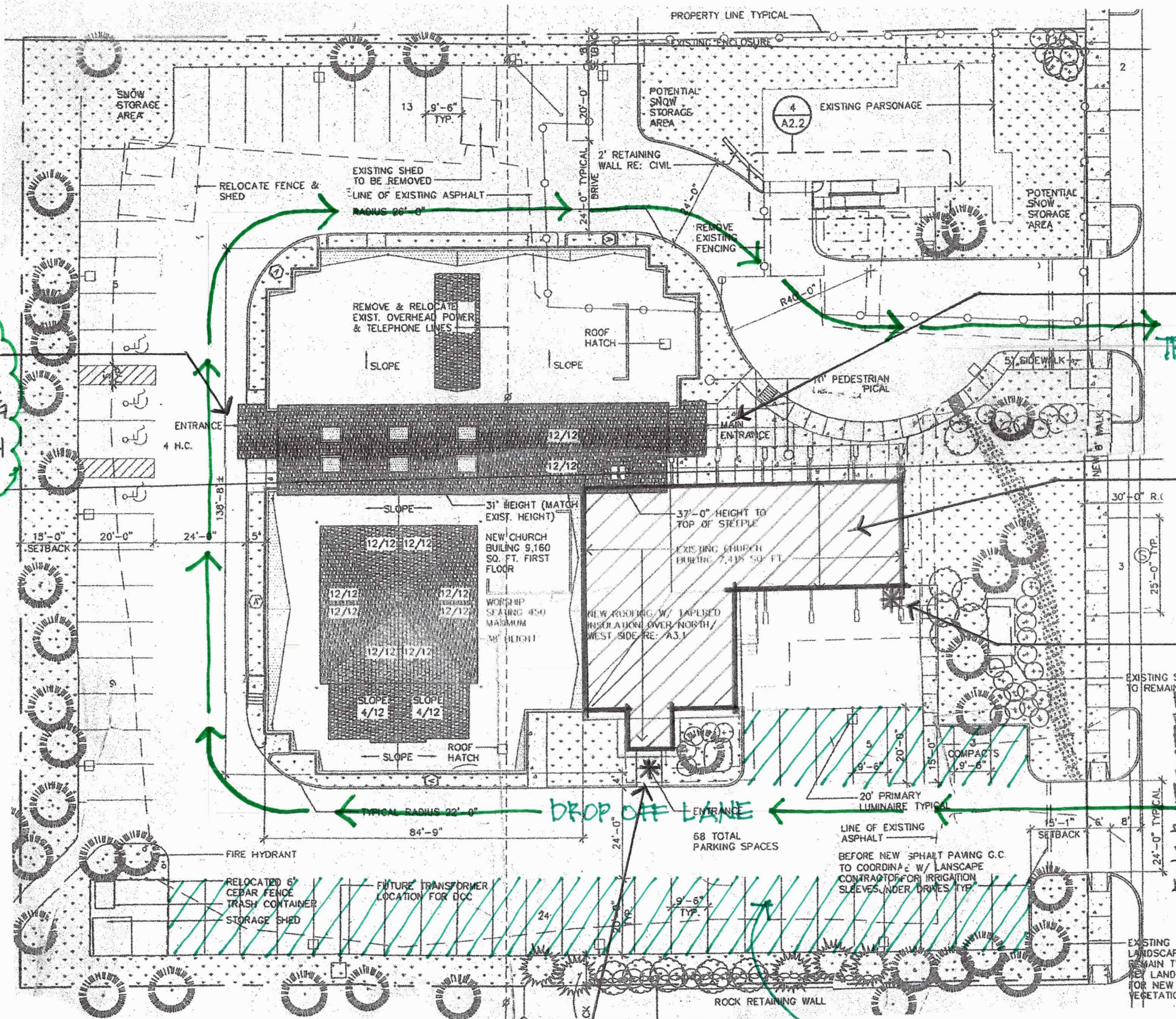
LOCATION OF BASEMENT LEVEL (HATCHED)

BASEMENT LEVEL EXIT DOOR FROM CLASSROOM WING

TRAFFIC IN NOTE:

THESE PLAN DRAWINGS ARE PART OF A CODE STUDY PACKAGE FOR CHANGE OF OCCUPANCY CLASSIFICATION DATED 10/11/22.

NOTE: SCHOOL IS IN SESSION DURING WEEK DAYS MONDAY THRU FRIDAY; CHURCH IS IN SESSION DURING WEEKEND DAYS SATURDAY & SUNDAY.



BASEMENT LEVEL ENTRY/EXIT DOOR ACCESS

HATCHED AREAS FOR SCHOOL PARKING

SITE PLAN

1" = 30'-0"



8864 s. indian creek street, highlands ranch, co. 80126
970.389.0492 jerry@jwarchitecture.net

DILLON COMMUNITY CHURCH
CHRISTIAN SCHOOL CODE STUDY

371 E. La BONTE STREET
PORTION OF LOTS 6 & 7, LOT M, NEW TOWN SUB
DILLON, SUMMIT COUNTY, COLORADO

FINAL 10/11/22
PARKING PLAN 6/26/22

1

OF 1