

NEW HOMEWOOD SUITES DESIGN

ON PREVIOUS DESIGN HAD A MORE SUCCESSFUL SOLUTION TO THE ROOF WITH A MAJOR ROOF SUPPORTED BY MINOR ROOF FORMS.

PRESENT SOLUTION IS ALL MINOR ROOFS, ALL OF EQUAL IMPORTANCE. DOES NOT MEET DESIGN CRITERIA.



1
A12.0

HOTEL ENTRY VIEW



O'BRYAN
PARTNERSHIP, INC
ARCHITECTS - A.I.A.

ARCHITECTURE,
PLANNING, INTERIORS
P. O. Box 2773
620 Main Street, Suite 6
Frisco, CO 80443
Tel: 970.668.1133
Fax: 970.668.2316
www.OPARCH.com

DILLON HOMEWOOD SUITES

LOTS 1, 1A, 1B, 1C - LAKE DILLON DRIVE
DILLON, COLORADO 80435

Revision:

Date: 1-22-18

Project No: 2703

Drawn by: SC5

Checked by: KAO

A12.0

RENDERING 1

DILLON HOMEWOOD SUITES

LOTS 1, 1A, 1B, 1C - LAKE DILLON DRIVE
DILLON, COLORADO 80435

Revision:

Date: 1-22-18

Project No: 2703

Drawn by: SC5

Checked by: KAO

A12.1

RENDERING 2



NOT A LOT OF DETAIL
OR DIFFERENTIATION
STYLISH FACADES

MORE
CONTEMPORARY
MAY NOT
WANT NEED
TRADITIONAL
PARAPET CORNICE

ANY OPPORTUNITY
FOR MATERIAL
ACCENTS TO REFLECT MOUNTAIN TOWN?
IN SOME ELEMENTS TO
FURTHER REINFORCE
CRAFT & DETAIL IN
TRADITIONAL COMPONENTS.

OUTRIGGER TOO
ELEGANT

BE CONSISTENT W/
OUTRIGGER BRACKET
DETAILING

SIMPLIFY
OF
DIFFERENT
MATERIALS

SIMPLIFY
MATERIALS
SO IT'S A
NOT 1/2
PROPORTION

FLAT ROOFING?

WAINSCOT IS VERY LOW
STYLE EXTENDS DOWN TO BASE, 30" H

1
A12.1

PORTE COCHERE VIEW

OUR COBB BUT 3/12
SAYS WILL ALL SHED 5/12

MORE CONSISTENT APPROACH TO BRACKETS TO HARMONIZE
SIMPLIFY # OF DIFFERENT WAYS TO DO CORNICE/PARAPETS



NOT SIGNIFICANT ENOUGH TO BE A BASE. UP TO 2 STORY DATUM OR 1 STORY DATUM.

1
A12.2

EAST SIDE VIEW

O' BRYAN PARTNERSHIP, INC ARCHITECTS - A.I.A.

ARCHITECTURE, PLANNING, INTERIORS
P. O. Box 2773
620 Main Street, Suite 8
Bisco, CO 80443
Tel: 970.668.1133
Fax: 970.668.2316
www.OPARCH.com

DILLON HOMEWOOD SUITES

LOTS 1, 1A, 1B, 1C - LAKE DILLON DRIVE
DILLON, COLORADO 80435

Revision:

Date: 1-22-18

Project No: 2703

Drawn by: SCS

Checked by: KAO

A12.2

RENDERING 3



O' BRYAN
PARTNERSHIP, INC
ARCHITECTS - A.I.A.

ARCHITECTURE,
PLANNING, INTERIORS
P. O. Box 2773
620 Main Street, Suite B
Frisco, CO 80443
Tel: 970.668.1133
Fax: 970.668.2316
www.OPARCH.com

DILLON HOMEWOOD SUITES

LOTS 1, 1A, 1B, 1C - LAKE DILLON DRIVE
DILLON, COLORADO 80435

Revision:

Date: 1-22-18

Project No: 2703

Drawn by: SC5

Checked by: KAO

A12.4

RENDERING 5

OUTROGERS APPEAR
VERY FREQUENTLY. MAKES
STRUCTURE LOOK FAKE



1
A12.4

NORTH-EAST VIEW



O' BRYAN
PARTNERSHIP, INC
ARCHITECTS - A.I.A.

ARCHITECTURE,
PLANNING, INTERIORS
P. O. Box 2773
620 Main Street, Suite 8
Frisco, CO 80443
Tel: 970.668.1133
Fax: 970.668.2316
www.OPARCH.com

DILLON HOMEWOOD SUITES

LOTS 1, 1A, 1B, 1C - LAKE DILLON DRIVE
DILLON, COLORADO 80435

Revision:

Date: 1-22-18

Project No: 2703

Drawn by: SCS

Checked by: KAO

A12.3

RENDERING 4



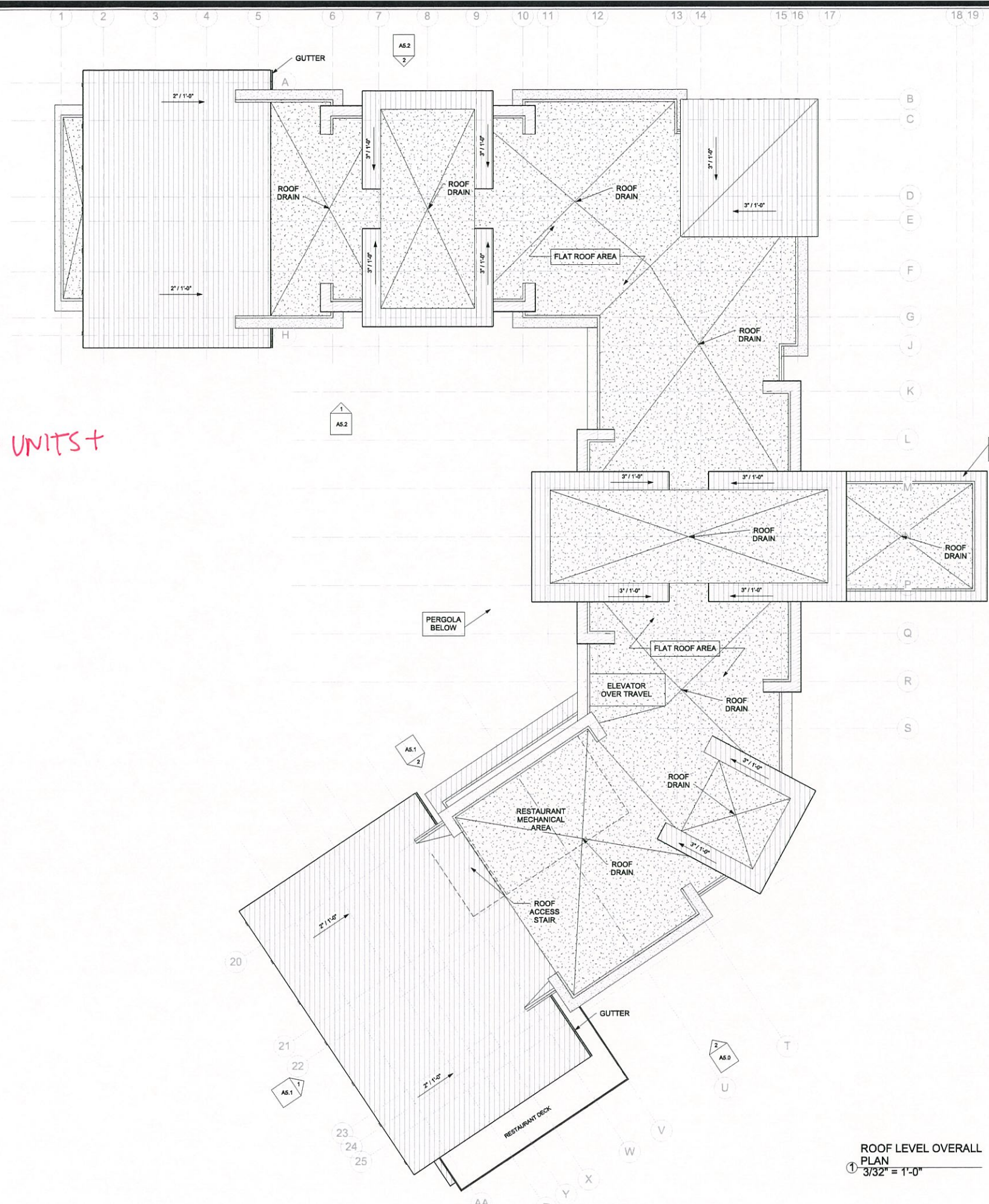
FLAT AWNING?

WHERE IS
STONE WAHNSCOT CAP?

1
A12.3

SOUTH SIDE VIEW

FLAT AWNING?



SHOW ZONES/
SHOW AREAS FOR MECH UNITS +
INDICATE HEIGHTS

ROOF LEVEL OVERALL
PLAN
① 3/32" = 1'-0"

DILLON HOMEWOOD SUITES
LOTS 1, 1A, 1B, 1C - LAKE DILLON DRIVE
DILLON, COLORADO 80435

Revisions:
ROOF CONCEPTS 2-20-18
PROGRESS SET 2-27-18
3-6-18 PLANNING & ZONING

Date: _____
Project No: _____
Drawn by: _____
Checked by: _____