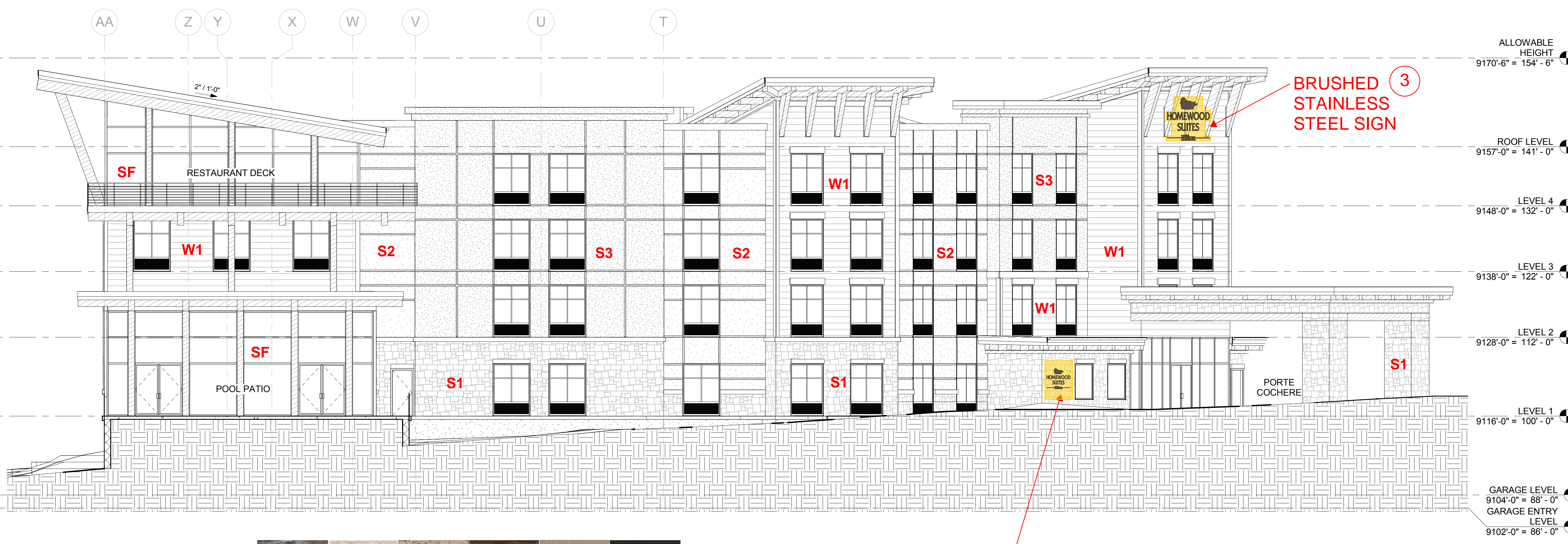


① NORTH EAST ELEVATION  
1/8" = 1'-0"



② EAST ELEVATION  
1/8" = 1'-0"

**LEGEND**  
**S1** - STONE; GALLEGOS DRYSTACK; "OKLAHOMA BROWN CHOPPED" #332G  
**S2** - STUCCO; DRYVIT COMMERCIAL CEMENT PLASTER; "POLAR WHITE" COLOR  
**S3** - STUCCO; DRYVIT COMMERCIAL CEMENT PLASTER; "SANDLEWOOD" COLOR  
**W1** - CEMENTITIOUS LAP SIDING; WOODTONE RUSTIC SERIES; "SMOKEY ALDER"  
**R1** - STANDING SEAM; BERRIDGE; "SIERRA TAN" COLOR  
**SF** - STOREFRONT WINDOW SYSTEM - DARK BRONZE FRAMES



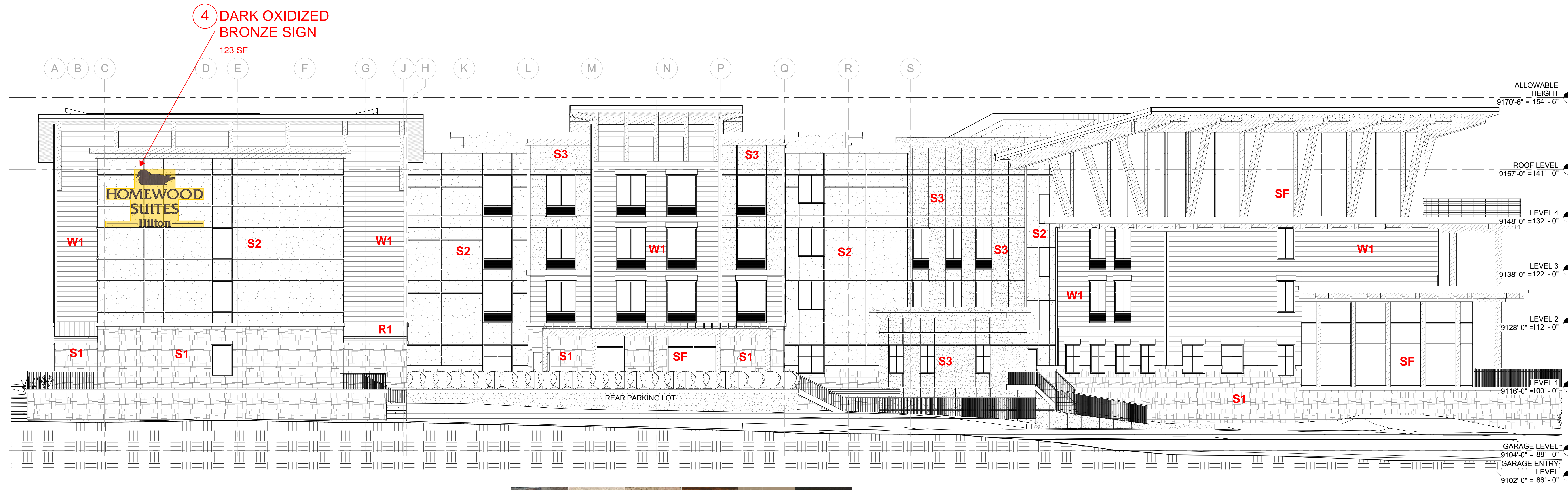
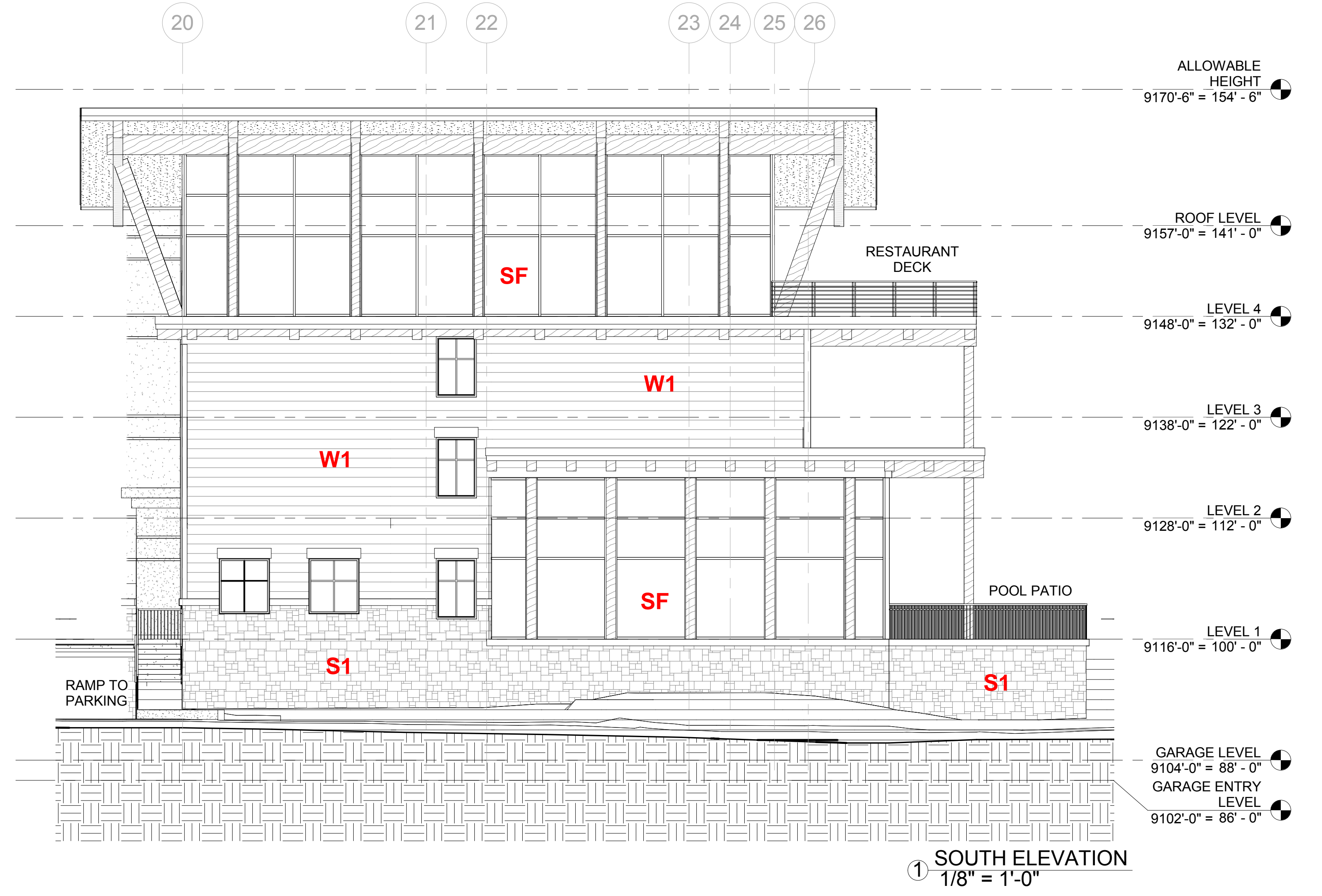
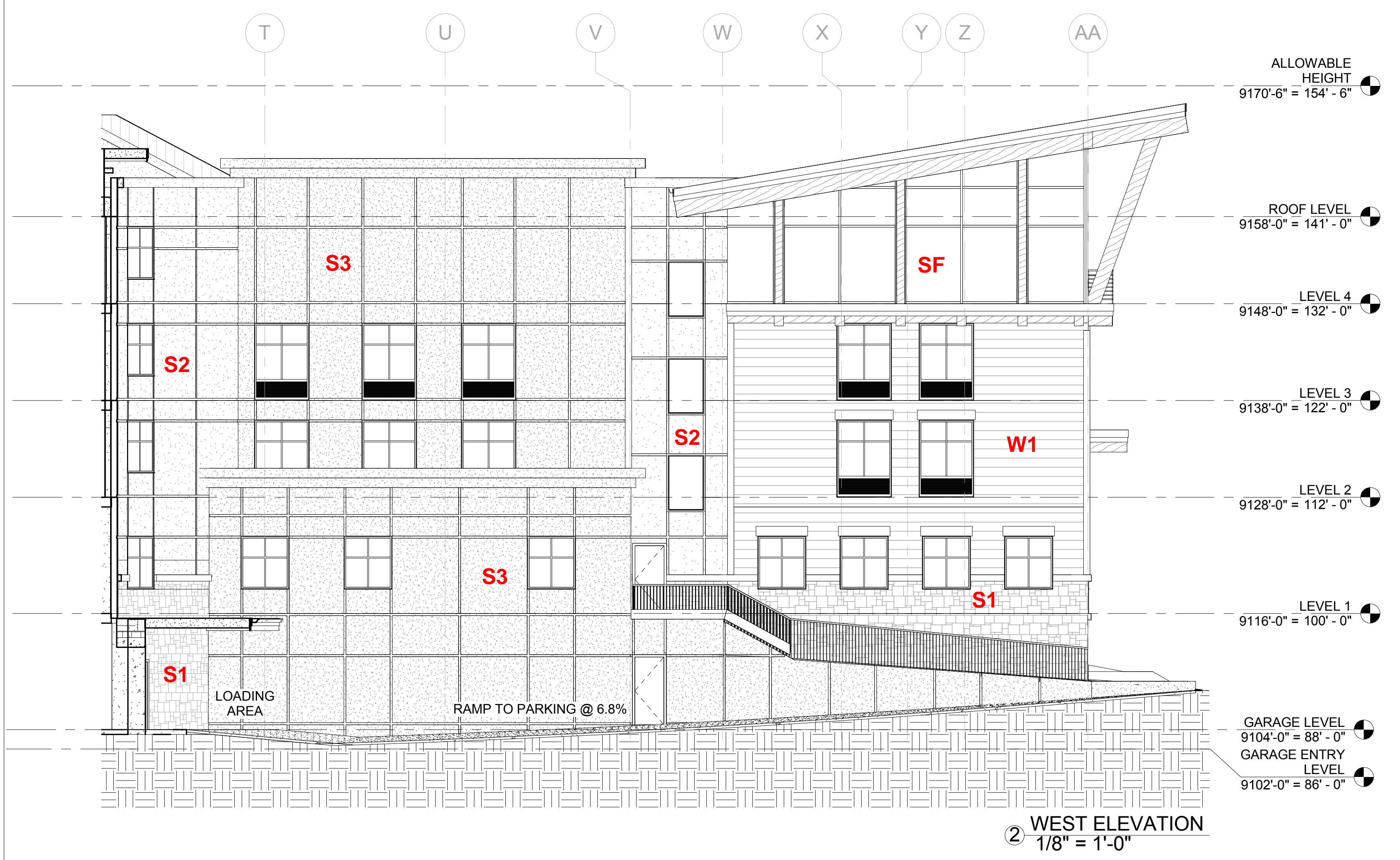


**DILLON HOMEWOOD SUITES**  
LOTS 1, 1A, 1B, 1C - LAKE DILLON DRIVE  
DILLON, COLORADO 80435

Revisions:  
ROOF CONCEPTS 2-20-18  
3-6-18 PLANNING & ZONING  
4-12-18 TOWN OF DILLON  
PLANNING & ZONING

Date: 1-22-18  
Project No: 2703  
Drawn by: Author  
Checked by: KAO

Sheet:  
**A5.1**  
BUILDING ELEVATIONS



**LEGEND**  
**S1** - STONE; GALLEGOS DRYSTACK; "OKLAHOMA BROWN CHOPPED" #332G  
**S2** - STUCCO; DRYVIT COMMERCIAL CEMENT PLASTER; "POLAR WHITE" COLOR  
**S3** - STUCCO; DRYVIT COMMERCIAL CEMENT PLASTER; "SANDLEWOOD" COLOR  
**W1** - CEMENTITIOUS LAP SIDING; WOODTONE RUSTIC SERIES; "SMOKEY ALDER"  
**R1** - STANDING SEAM; BERRIDGE; "SIERRA TAN" COLOR  
**SF** - STOREFRONT WINDOW SYSTEM - DARK BRONZE FRAMES

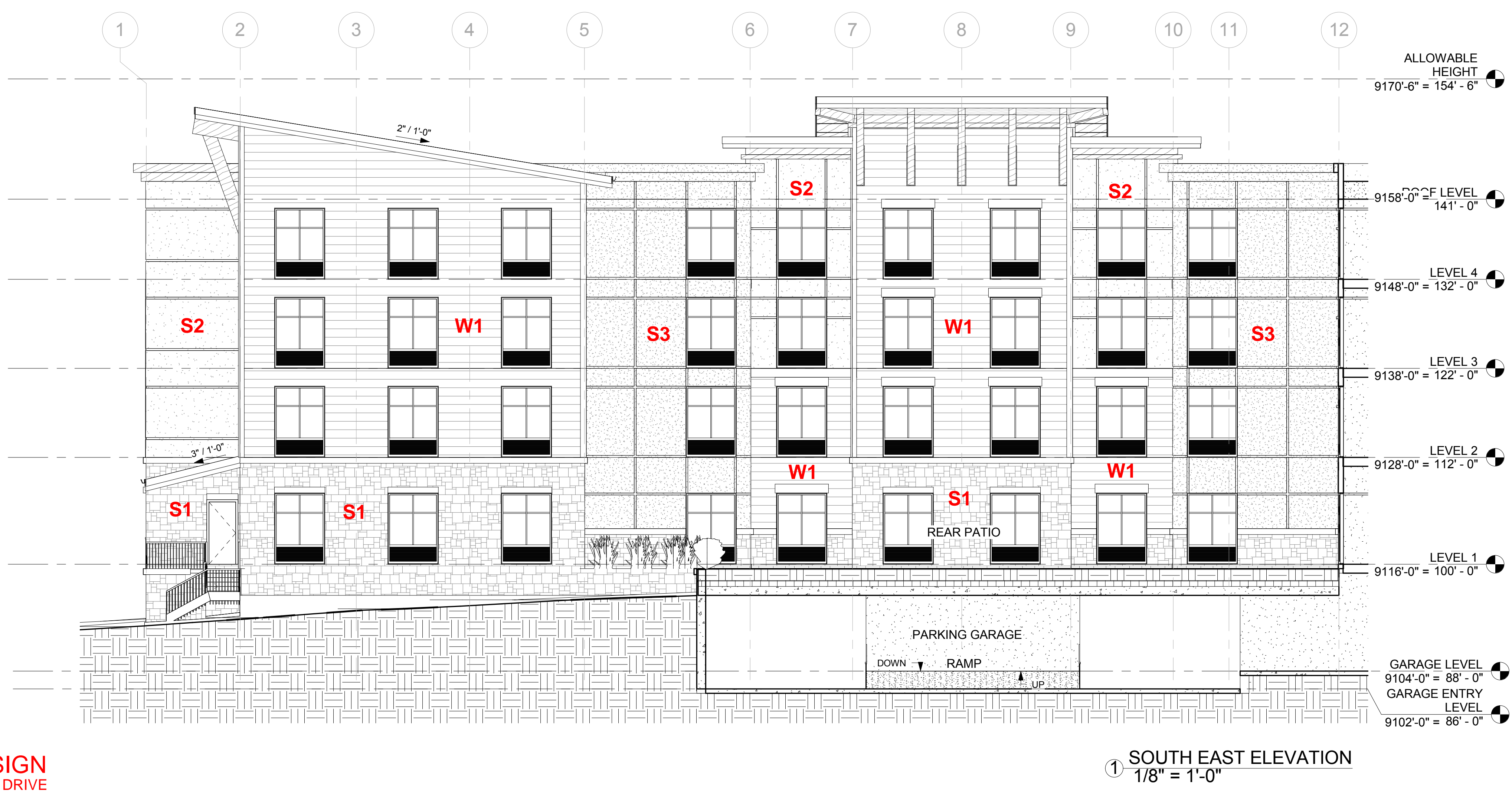
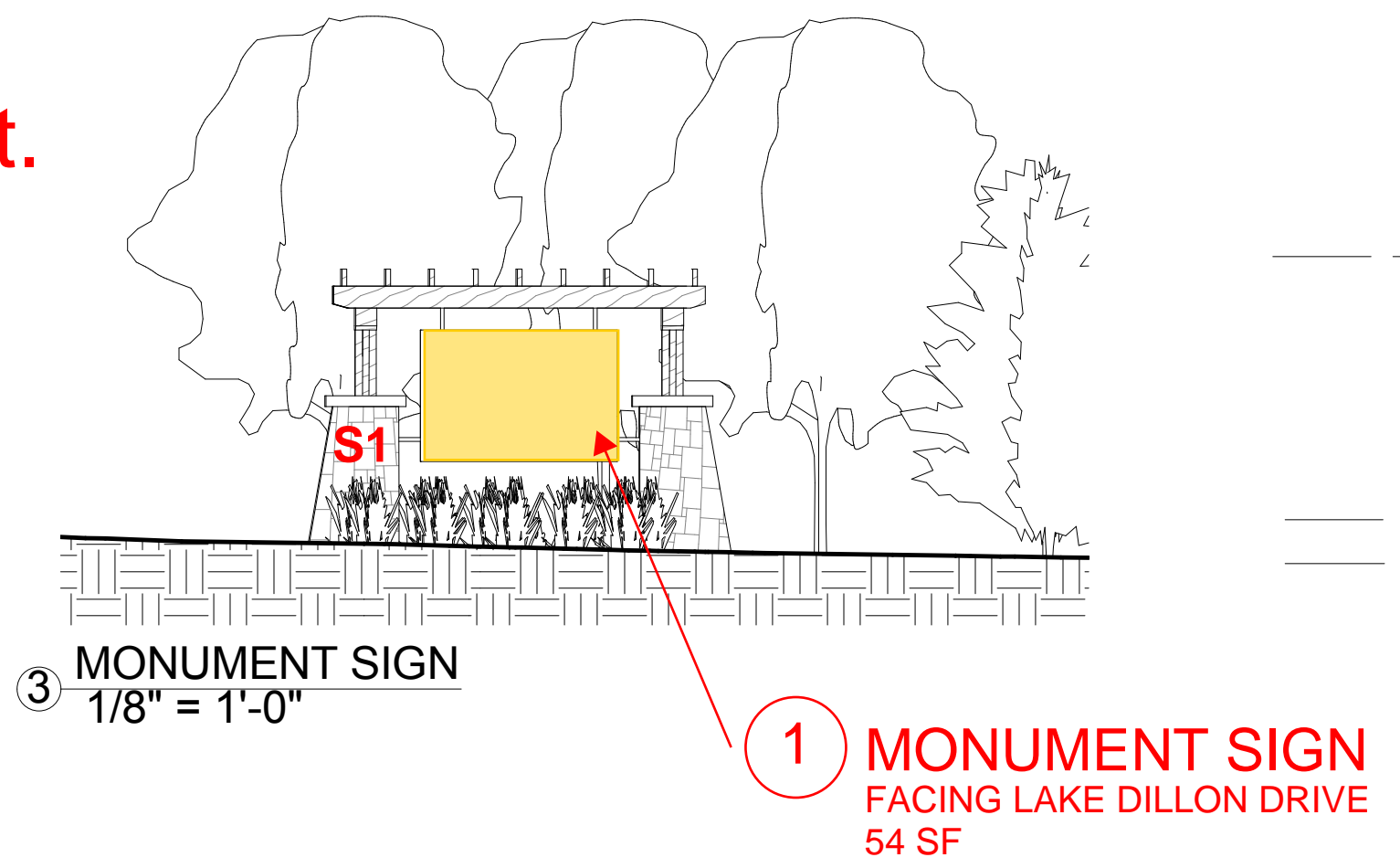




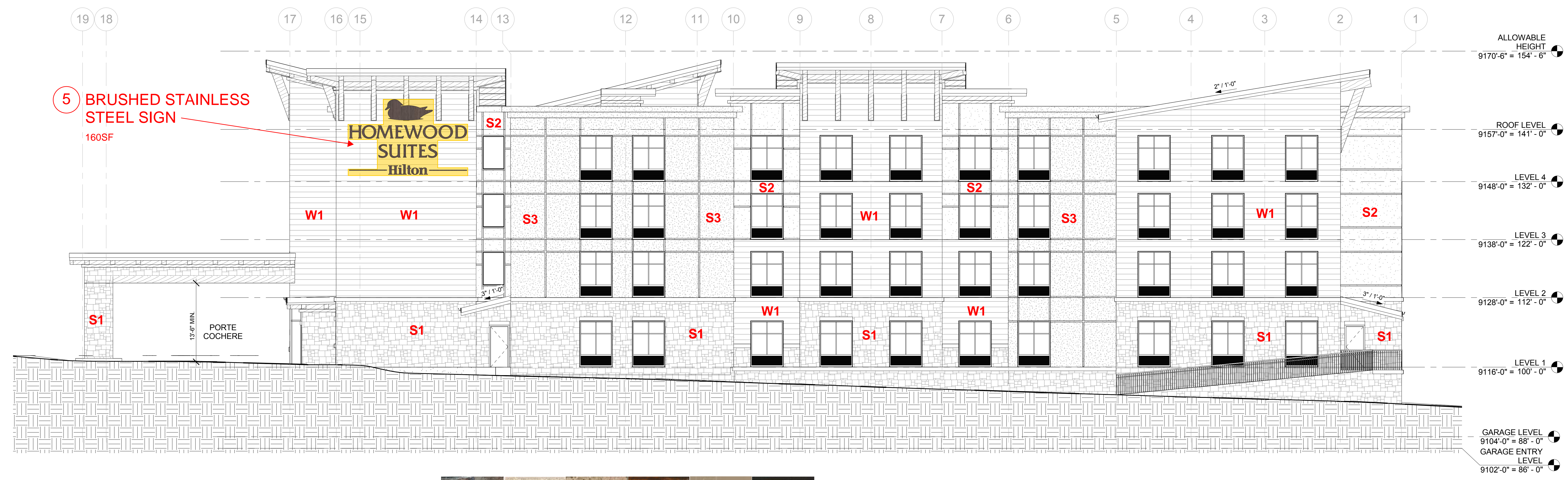
Notes: All signage to be electrified  
 All totals below are rough estimates  
 Monument sign location may change to current Conoco monument sign location. This change has not been fully investigated at this time.

Location	Shaded Area
1 - Monument Entry =	54 sq.ft.
2 - Main Entry (Level 1) =	45 sq.ft.
3 - Main Entry (High) =	55 sq.ft.
4 - Stair Core Sign =	123 sq.ft.
5 - Highway 6 =	160 sq.ft.
<b>Total =</b>	<b>437 sq.ft.</b>

Assume ~450 sq.ft. of signage on this 110,000 sq.ft. building



① SOUTH EAST ELEVATION  
1/8" = 1'-0"



② NORTH WEST ELEVATION  
1/8" = 1'-0"

**LEGEND**  
**S1** - STONE; GALLEGOS DRYSTACK; "OKLAHOMA BROWN CHOPPED" #332G  
**S2** - STUCCO; DRYVIT COMMERCIAL CEMENT PLASTER; "POLAR WHITE" COLOR  
**S3** - STUCCO; DRYVIT COMMERCIAL CEMENT PLASTER; "SANDLEWOOD" COLOR  
**W1** - CEMENTITIOUS LAP SIDING; WOODTONE RUSTIC SERIES; "SMOKEY ALDER"  
**R1** - STANDING SEAM; BERRIDGE; "SIERRA TAN" COLOR  
**SF** - STOREFRONT WINDOW SYSTEM - DARK BRONZE FRAMES



**O'BRYAN PARTNERSHIP, INC.**  
 ARCHITECTS - A.I.A.

ARCHITECTURE, PLANNING, INTERIORS

P. O. Box 2773  
 620 Main Street, Suite 8  
 Frisco, CO 80443  
 Tel: 970.668.1133  
 Fax: 970.668.2316

www.oparch.com

**DILLON HOMEWOOD SUITES**

LOTS 1, 1A, 1B, 1C - LAKE DILLON DRIVE  
 DILLON, COLORADO 80435

Revisions:  
 ROOF CONCEPTS 2-20-18  
 3-6-18 PLANNING & ZONING  
 4-12-18 TOWN OF DILLON PLANNING & ZONING

Date: 1-22-18  
 Project No: 2703  
 Drawn by: Author  
 Checked by: KAO

Sheet:  
**A5.2**  
 BUILDING ELEVATIONS