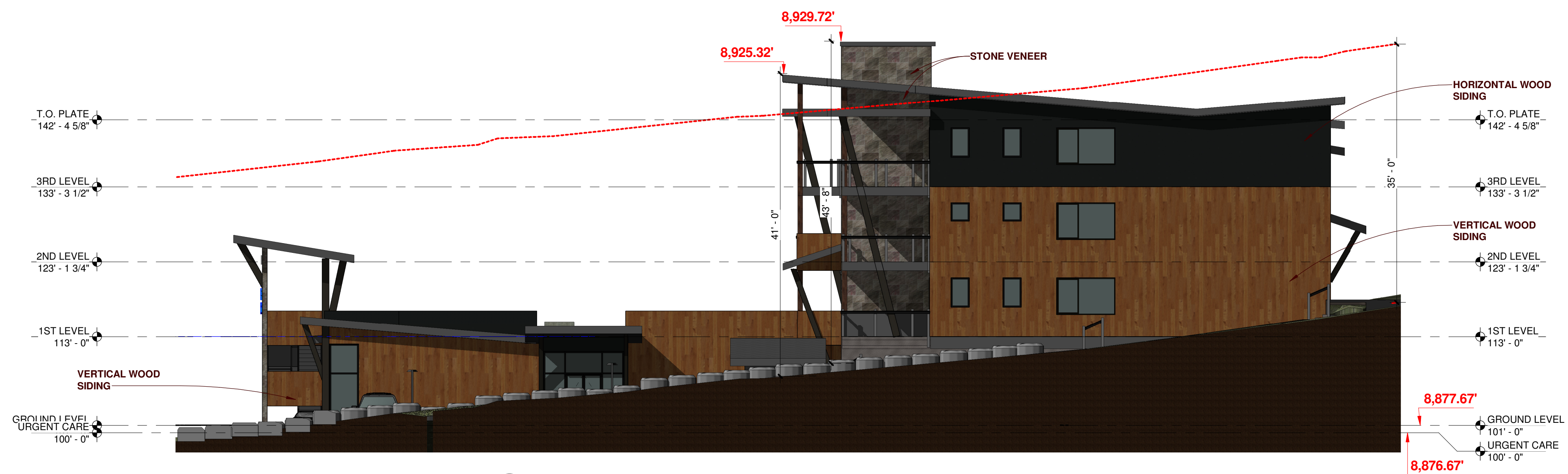


2 URGENT CARE WEST ELEVATION
A201 1" = 10'-0"



1 WEST ELEVATION
A201 1" = 10'-0"

Dillon Urgent Care & Residences
956 W. Anemone Trail
DILLON, COLORADO



ERIC SMITH ASSOCIATES, P.C.
1919 SEVENTH STREET
BOULDER, COLORADO, 80302
(303) 442-6458, (303) 442-4745 FAX

All design, documents and data prepared by Eric Smith Associates, P.C. as instruments of service shall remain property of Eric Smith Associates, P.C. and shall not be copied, changed or disclosed in any form whatsoever without first obtaining the express written consent of Eric Smith Associates, P.C.

Eric Smith Associates, P.C.

REVISIONS		
No.	Description	Date
1	RE: 1st SUB COMMENTS	2018-08-21

Job Number:	17039
Date:	2018 JUL 11
Drawn By:	J.M.
Checked By:	T.J.

Project Phase	PUD (PLANNED UNIT DEVELOPMENT) PERMIT
Sheet Title	EXTERIOR ELEVATIONS
Sheet Number	A201

2018-08-21

Dillon Urgent Care & Residences
 956 W. Anemone Trail
 DILLON, COLORADO



2 NORTH ELEVATION
 1" = 10'-0"



1 URGENT CARE NORTH ELEVATION
 1" = 10'-0"



ERIC SMITH ASSOCIATES, P.C.
 1919 SEVENTH STREET
 BOULDER, COLORADO, 80302
 (303) 442-6458, (303) 442-4745 FAX

All design, documents and data prepared by Eric Smith Associates, P.C. as instruments of service shall remain property of Eric Smith Associates, P.C. and shall not be copied, changed or disclosed in any form whatsoever without first obtaining the express written consent of Eric Smith Associates, P.C.

Eric Smith Associates, P.C.

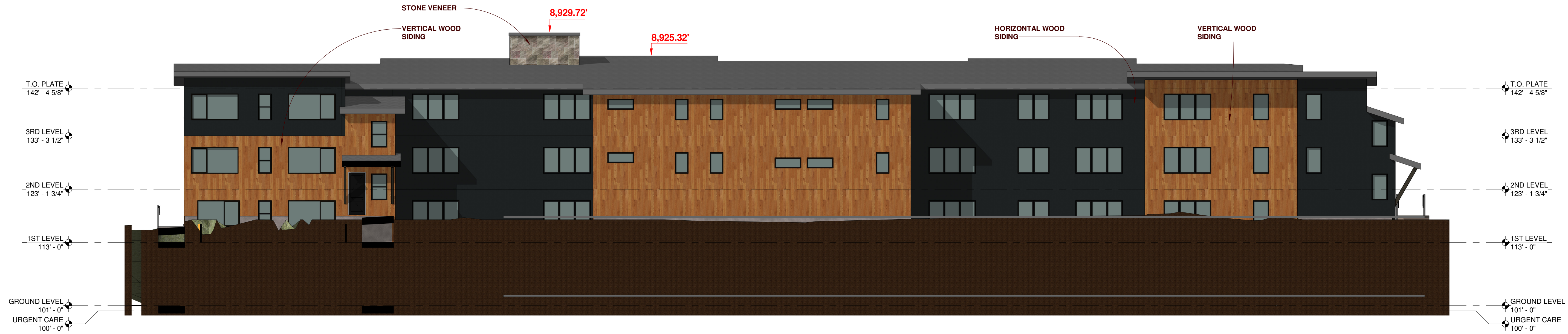
REVISIONS		
No.	Description	Date

Job Number:	17039
Date:	2018 JUL 11
Drawn By:	Author
Checked By:	Checker

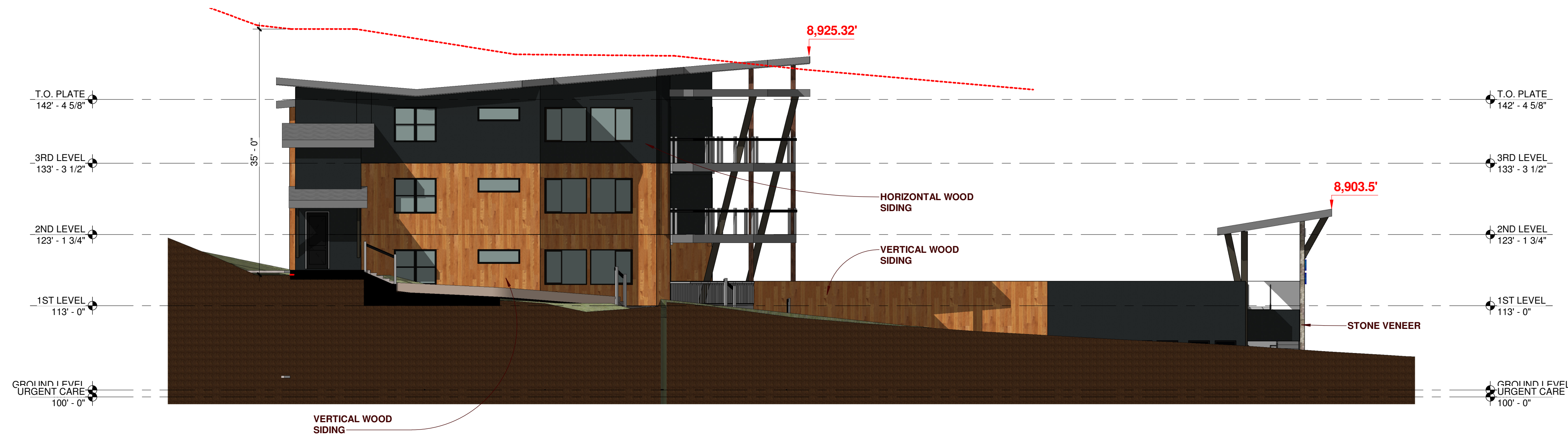
Project Phase	PUD (PLANNED UNIT DEVELOPMENT) PERMIT
Sheet Title	EXTERIOR ELEVATIONS

Sheet Number	A202
--------------	------

Dillon Urgent Care & Residences
 956 W. Anemone Trail
 DILLON, COLORADO



2 SOUTH ELEVATION
 A203 1" = 10'-0"



1 EAST ELEVATION
 A203 1" = 10'-0"



ERIC SMITH ASSOCIATES, P.C.
 1919 SEVENTH STREET
 BOULDER, COLORADO, 80302
 (303) 442-6458, (303) 442-4745 FAX

All design, documents and data prepared by Eric Smith Associates, P.C. as instruments of service shall remain property of Eric Smith Associates, P.C. and shall not be copied, changed or disclosed in any form whatsoever without first obtaining the express written consent of Eric Smith Associates, P.C.

Eric Smith Associates, P.C.

REVISIONS		
No.	Description	Date

Job Number:	17039
Date:	2018 JUL 11
Drawn By:	ESA
Checked By:	ESA

Project Phase	PUD (PLANNED UNIT DEVELOPMENT) PERMIT
Sheet Title	EXTERIOR ELEVATIONS
Sheet Number	A203