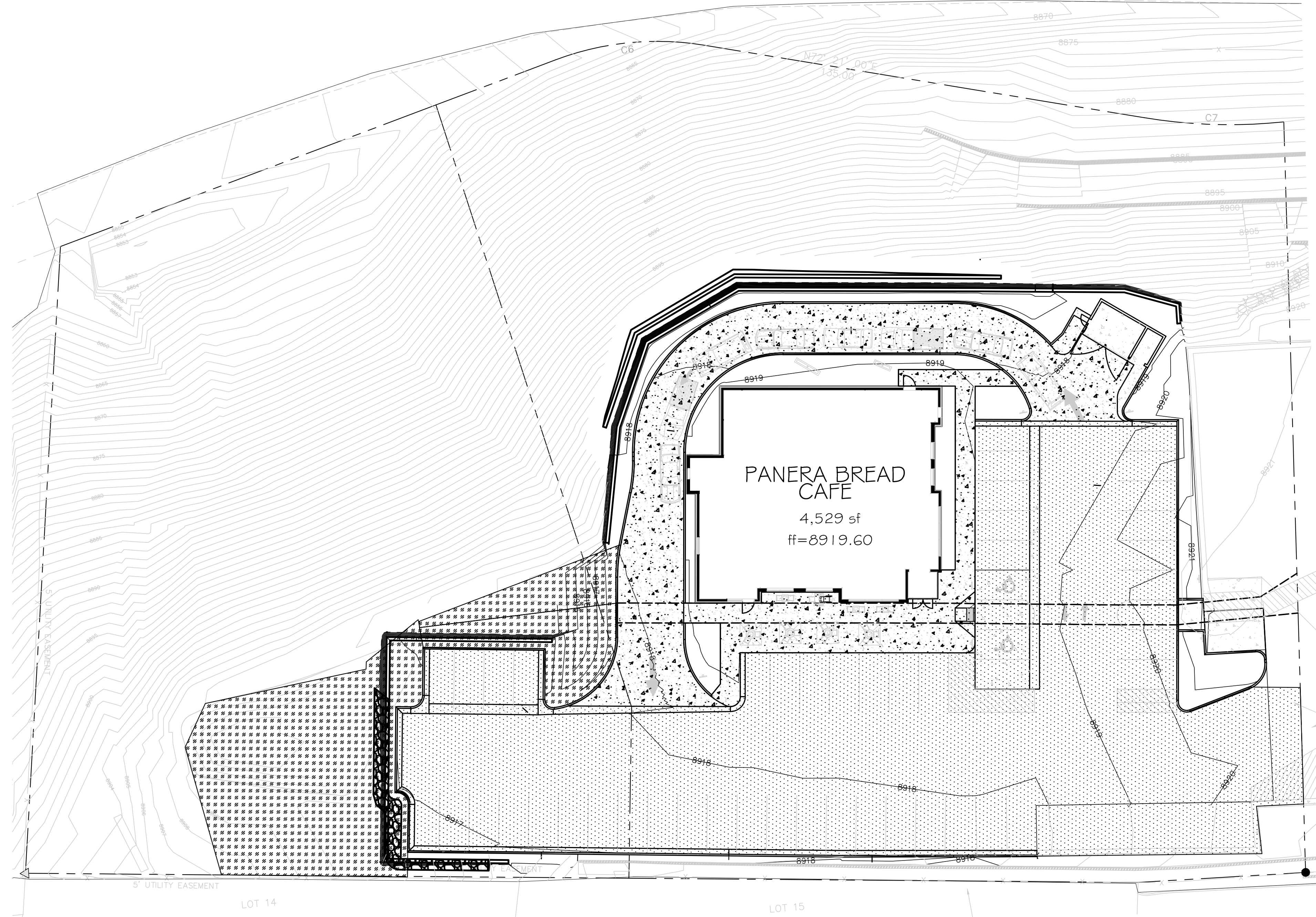


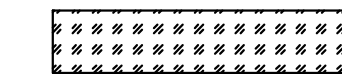
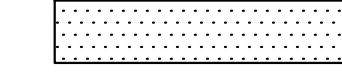

DRAWN BY CR
 CHECKED MH
 JOB NO. 1821
 DATE 11-15-2018
 REVISIONS
 2-28-19: retaining wall

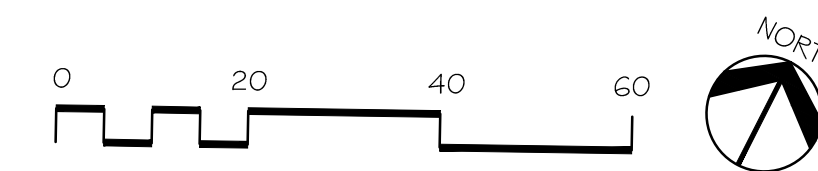
PANERA BREAD
 DILLON, COLORADO

Clavonne, Roberts & Associates, Inc.
 LAND PLANNING AND
 LANDSCAPE ARCHITECTURE
 222 N. 7TH STREET
 GRAND JUNCTION, CO 81501
 970-241-0745 P
 970-241-0765 F
 www.clavonne.com



SNOW STORAGE LEGEND

-  SNOW STORAGE AREAS
5,506 S.F.
-  SNOW REMOVAL AREA
19,060 S.F.
-  SNOW MELT AREAS



ACCEPTANCE BLOCK

THE TOWN OF DILLON REVIEW CONSTITUTES GENERAL COMPLIANCE WITH THE CITY'S DEVELOPMENT STANDARDS, SUBJECT TO THESE PLANS BEING SEALED, SIGNED, AND DATED BY THE PROFESSIONAL OF RECORD. REVIEW BY THE CITY DOES NOT CONSTITUTE APPROVAL OF THE PLAN DESIGN. THE CITY NEITHER ACCEPTS NOR ASSUMES ANY LIABILITY FOR ERRORS OR OMISSIONS. ERRORS IN THE DESIGN OR CALCULATIONS REMAIN THE RESPONSIBILITY OF THE PROFESSIONAL OF RECORD.

CITY DEVELOPMENT ENGINEER _____ Date _____
 CITY PLANNER _____ Date _____

SNOW STORAGE PLAN

□□□□□□□□

SS-1