



INDIRECT STORE



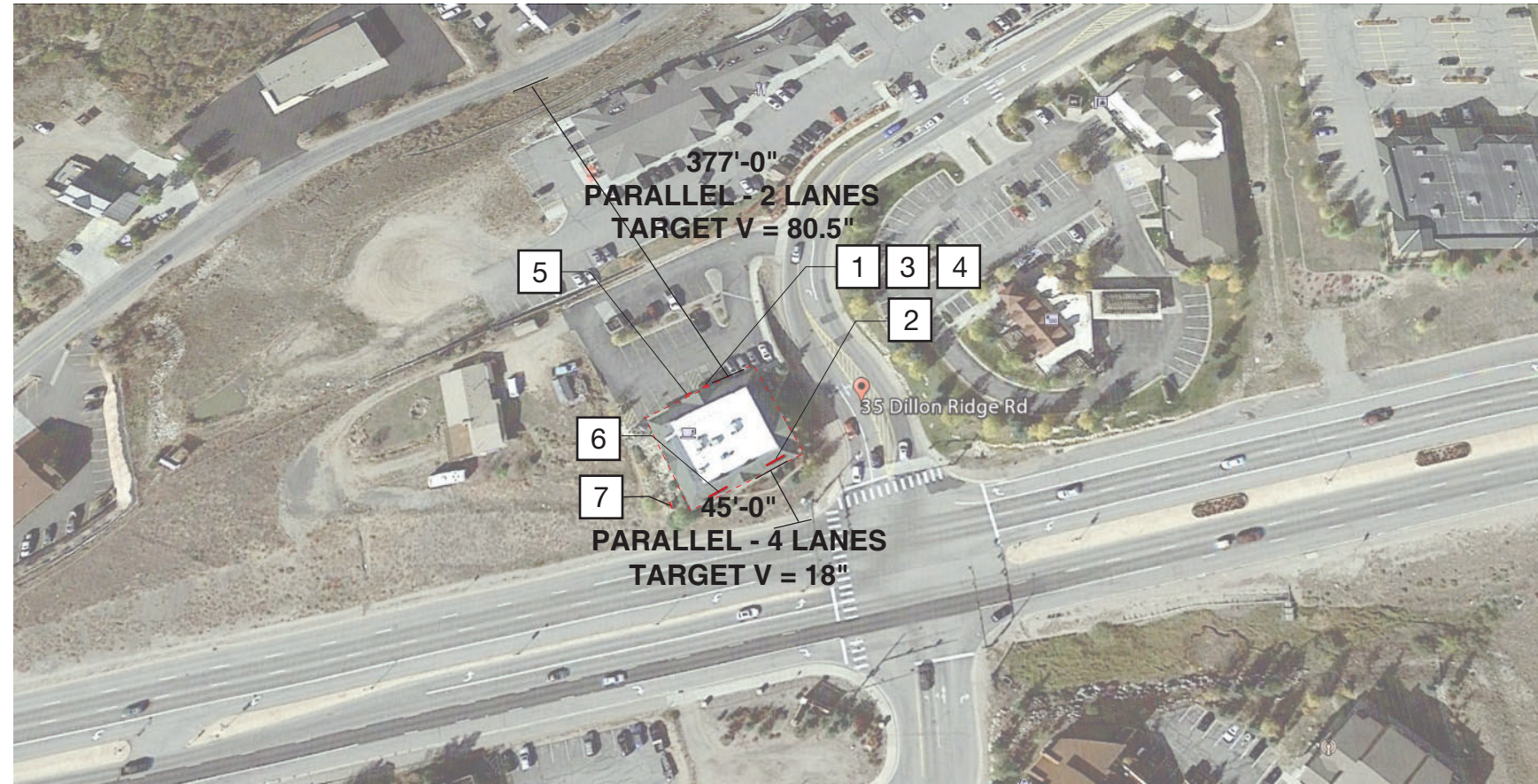
**NOT YET ISSUED  
CELLULAR PLUS  
35 DILLON RIDGE ROAD  
DILLON, CO 80435**

**EXTERIOR SIGNAGE SUBMITTAL**

PROJ #1346  
0000-00-00

**DESIGN APPROVAL:**

SUBMITTAL RECORD	
DATE	REMARKS



## LEGEND

		QTY
1	TENANT #1 NORTH ELEVATION WALL SIGN	1
2	TENANT #1 SOUTH ELEVATION BLDG SIGN	1
3	TENANT #1 NORTH ELEVATION STORE HOURS	1
4	TENANT #1 NORTH ELEVATION ADDRESS	1
5	TENANT #2 NORTH ELEVATION WALL SIGN	1
6	TENANT #2 SOUTH ELEVATION BLDG SIGN	1
7	TENANT #2 FREESTANDING SIGN	1

## KEY

SIGN LOCATION —

BUILDING OUTLINE - - - - -



## V-Height Lookup Tool Results

### Results

## V-Height Lookup

1346  
35 Dillon Ridge Road Dillon, CO 80435

### Sign 1 = 80.5" V-Height

Viewing Type - Parallel  
Illumination - Internal Opaque  
Driving Environment - 2 Lanes  
Sign Offset From Curb - 360-379 Feet

### Sign 2 = 18" V-Height

Viewing Type - Parallel  
Illumination - Internal Opaque  
Driving Environment - 4 Lanes  
Sign Offset From Curb - 45-49 Feet

#### Location

TENANT #1 North Elevation (Entry Facade)	PROPOSED 15 SF
TENANT #1 South Elevation (Rear Facade)	EXISTING 45 SF
TENANT #2 North Elevation (Entry Facade)	PROPOSED 15 SF
TENANT #2 South Elevation (Rear Facade)	EXISTING 45 SF

### Verizon Guideline Conformance, Exception Request and Justification:

Painted facade not allowed per LL  
No backer panel per LL  
Letterset options must be raceway mounted per LL  
- **Letterset clear space rule v height: Sign 1: 12" Sign 2: 22"**  
- Letterset clear space exception v height: Sign1: 14.5" Sign 2: 24"



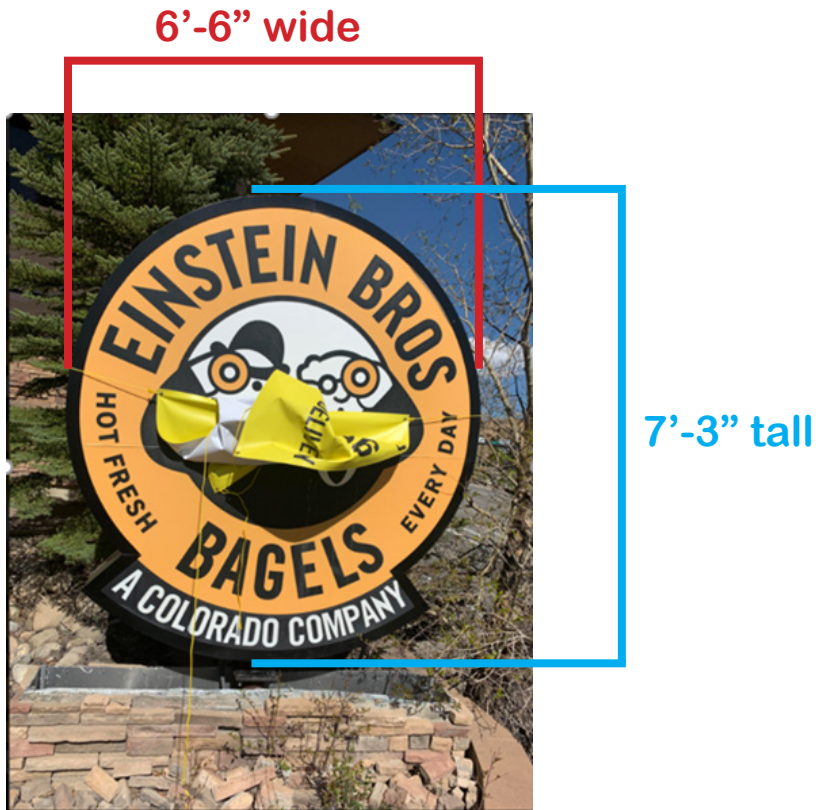








Tenant #2 - West Elevation - Freestanding sign  
6' 6" wide  
7' 3" tall



Tenant #1 - Freestanding Sign  
Permitted a sign panel on the freestanding sign in accordance  
with the original master sign plan for the building.  
5' 6" wide  
2' tall



EXISTING CONDITION



PROPOSED V-HEIGHT - 12"

REVISED CONDITION

EXISTING SIGNAGE: N/A  
 EXISTING VERIZON SIGNAGE HEIGHT: N/A  
 EXISTING ADJACENT TENANT SIGNAGE HEIGHT: N/A

NOTE:  
 ALL EXISTING, NON-STANDARD, WINDOW GRAPHICS AND SIGNAGE  
 TO BE REMOVED AND REPLACED WITH NEW STANDARD GRAPHICS.  
 FACADE TO BE REPAIRED TO LIKE NEW CONDITIONS.

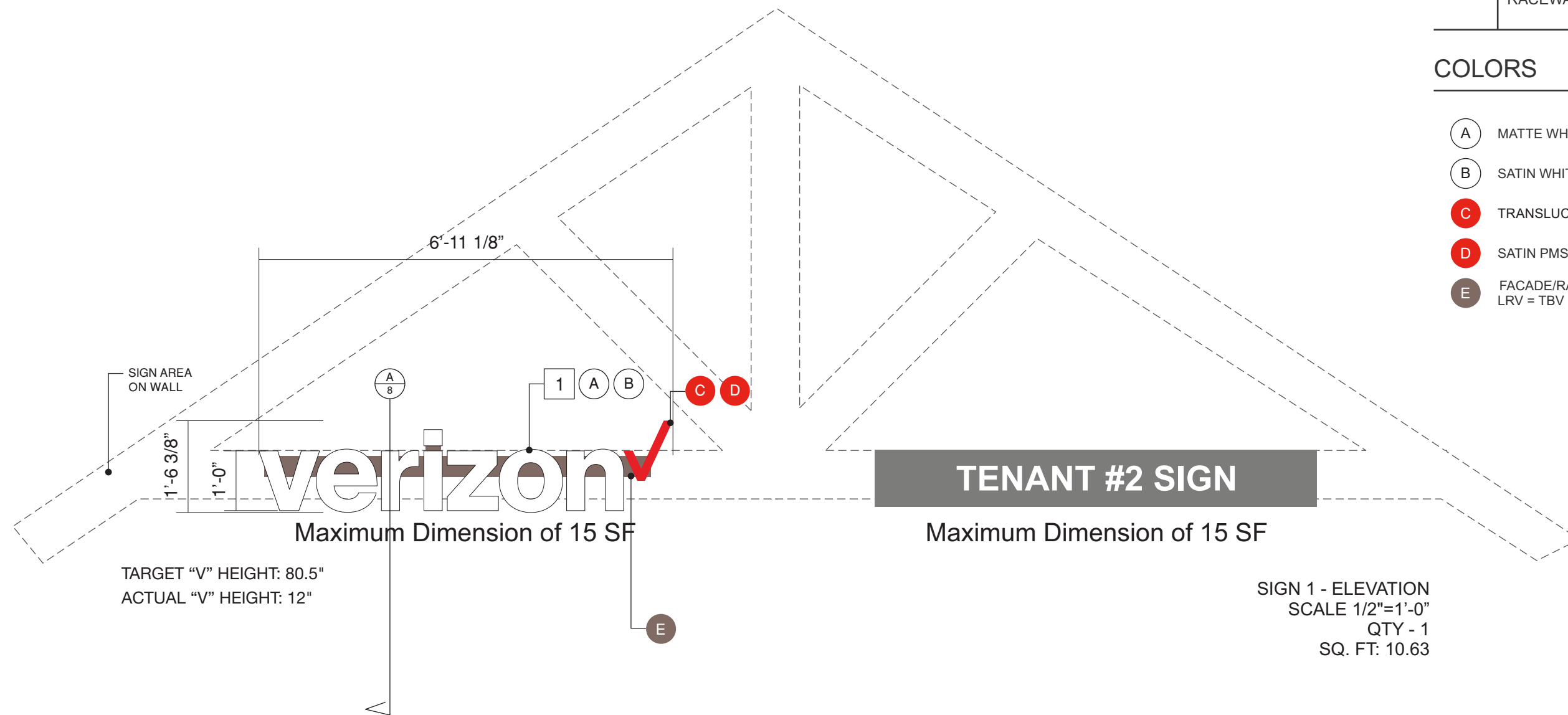
## KEY NOTES

1

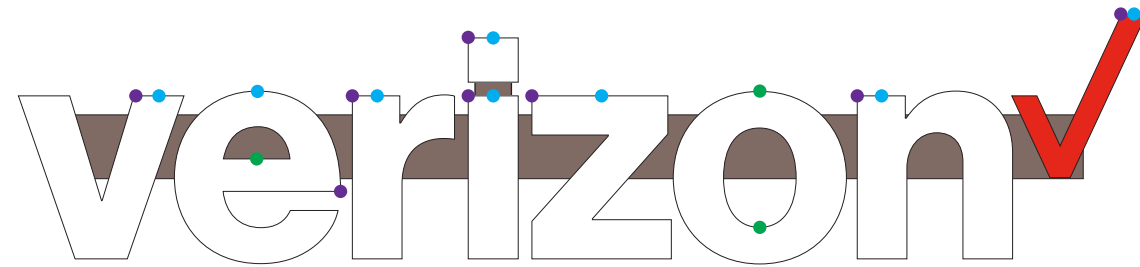
2" DEEP, FACE-LIT, FABRICATED ALUMINUM CHANNEL LETTERS MOUNTED TO 5" HIGH x 2 3/4" DEEP ALUMINUM RACEWAY. RACEWAY MOUNTED TO WALL.

## COLORS

- (A) MATTE WHITE ACRYLIC
- (B) SATIN WHITE TRIM & RETURNS
- (C) TRANSLUCENT POPPY RED 3M 3630-143
- (D) SATIN PMS 485 TRIM & RETURNS
- (E) FACADE/RACEWAY COLOR  
LRV = TBV

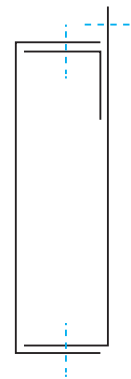






- = Trim Cap Seam (Corner Locations)
- = Trim Cap & Return Seam Location
- = Return Seam Location

RACEWAY	
11	5" (H) x 2 3/4" DEPTH UL LISTED WIREWAY. 2" EXTENDED MOUNTING TAB. CONTAINS SLOAN 701507-MODW 60W PWR SUPPLY (QTY VARIES)
12	2" EXTENDED TAB FOR MOUNTING. MOUNTING HARDWARE: VARIES ON STRUCTURE (SUPPLIED WITH 3/8" THREADED SPEED CLIPS)
13	RACEWAY: U-CHANNEL WITH ATTACHED LETTERS TO MOUNT OVER L-CHANNEL WITH ANGLE MOUNT TOP

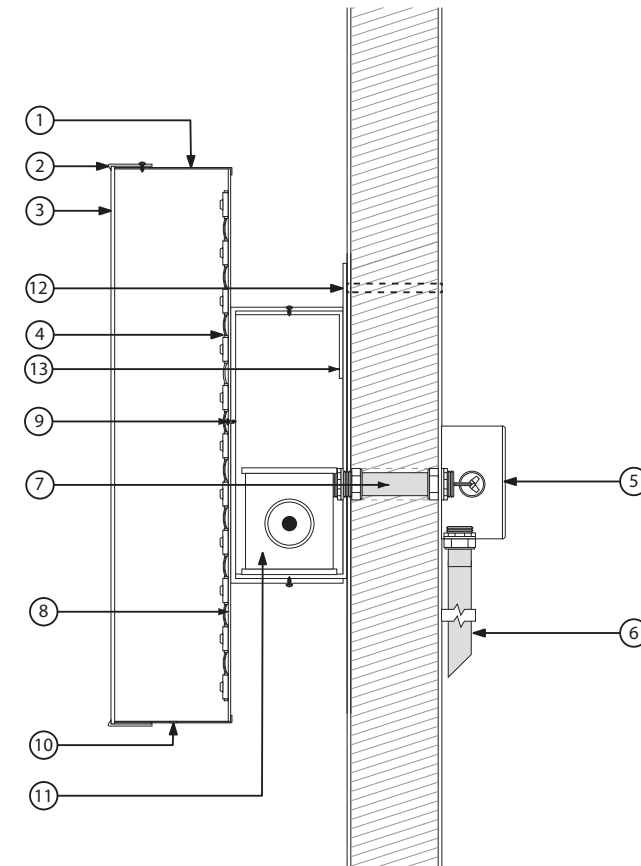


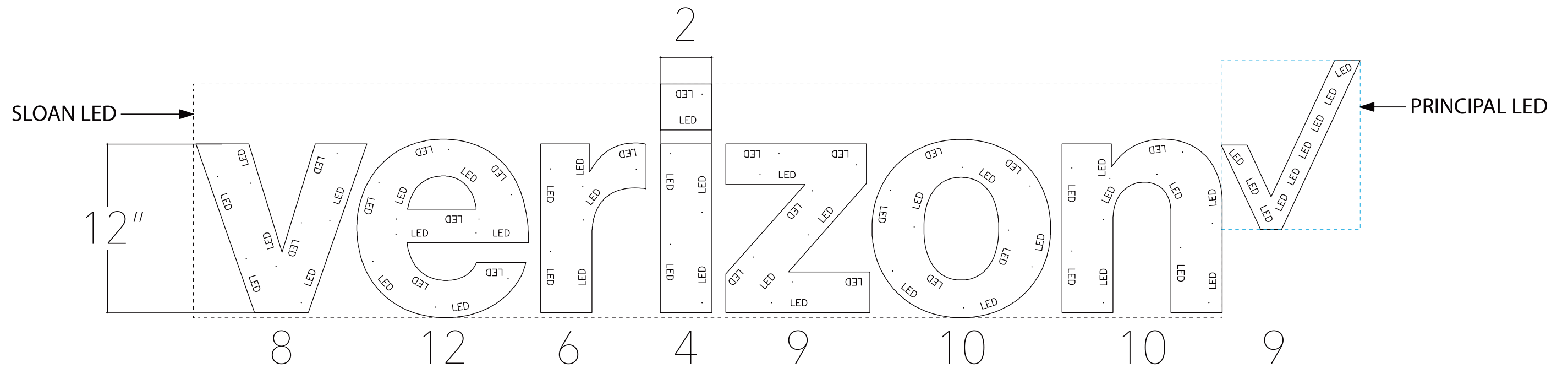
RACEWAY DIAGRAM - CROSS SECTION

VERIZON LETTERS	
1	0.040 ALUMINUM RETURNS (2" DEPTH); PAINTED MP #6425 SP SATIN HI HIDE WHITE
2	3/4" TRIM CAP: PAINTED MP #6425 SP SATIN HI HIDE WHITE
3	3/16" ACRYLIC FACE: #7328 P95 MATTE ACRYLIC FACE
4	LED UNITS (WHITE): SLOAN PRISM

CHECKMARK LOGO	
1	0.040 ALUMINUM RETURNS (2" DEPTH); PAINTED MP #643 SATIN: PMS 485
2	3/4" TRIM CAP: PAINTED MP #643 SATIN: PMS 485
3	3/16" ACRYLIC FACE: #7328 WHITE ACRYLIC WITH APPLIED 3M 3630-143 VINYL
4	LED UNITS (RED): PRINCIPAL PL-FS3 RD1-P

IDENTICAL SPECS	
5	UL LISTED HOUSING: SECONDARY WIRING SPLICE POINT (WHEN NEEDED)
6	PRIMARY POWER CIRCUIT (PROVIDED/PERMITTED BY OTHERS) TO BE PLACED WITHIN 5 FEET OF CENTER OF SIGN
7	CONDUIT: SECONDARY ELECTRICAL RUN
8	0.063 ALUMINUM BACK: PRECOAT WHITE FINISH
9	MOUNTING HARDWARE: #8 HEX SCREW INTO BACKER PANEL
10	WEEP HOLES





**MODULE AMOUNT**

48 MODULES PER POWER SUPPLY (SLOAN 120D1 HAS TWO SECONDARY LEGS EACH 48+48 MODULES)

POWER SUPPLIES = 1 SLOAN 120D1

POWER SUPPLIES WILL BE REQUIRED TO BE INSTALLED IN A POWER SUPPLY BOX

NOT TO SCALE





EXISTING CONDITION  
SCALE: 3/32" = 1'-0"

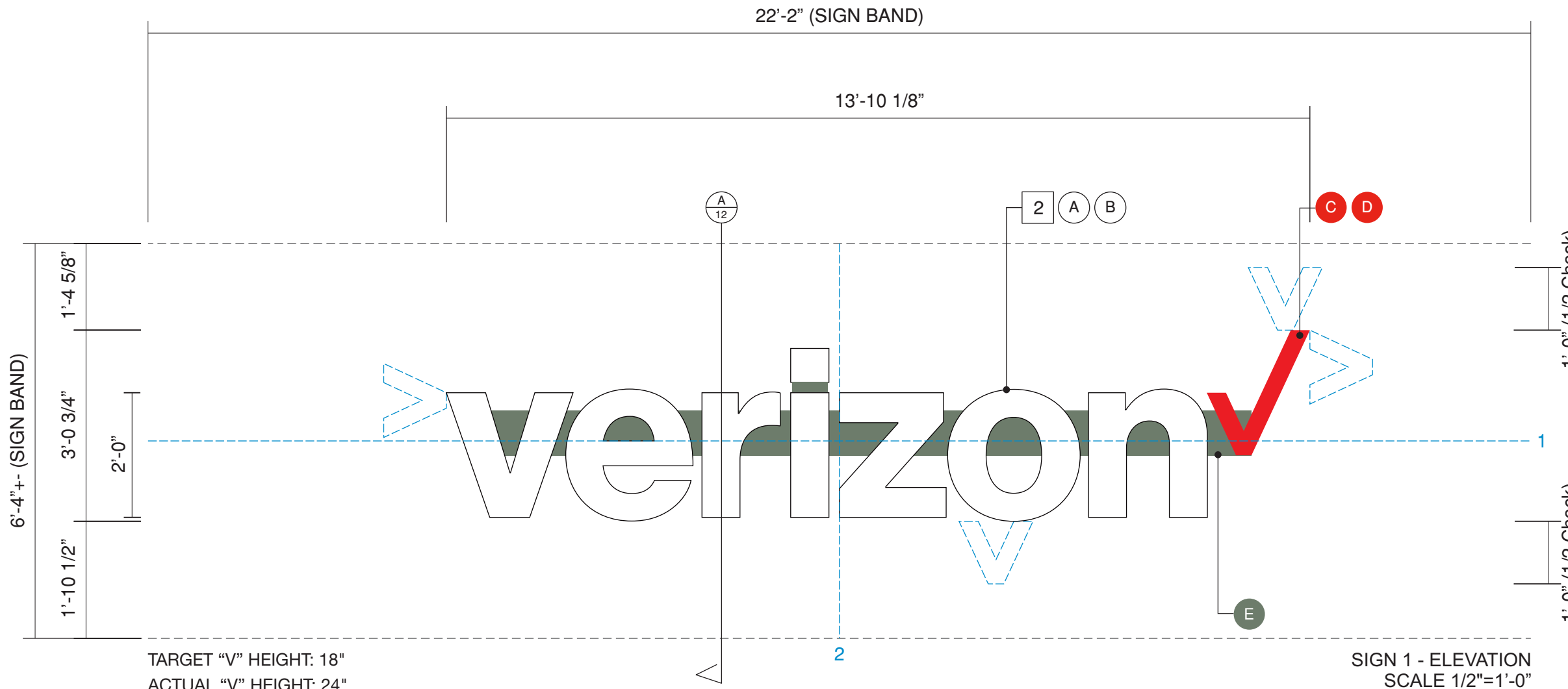


PROPOSED V-HEIGHT - 24"

REVISED CONDITION

EXISTING SIGNAGE: N/A  
EXISTING VERIZON SIGNAGE V-HEIGHT: 12"  
EXISTING ADJACENT TENANT SIGNAGE HEIGHT: 22"

NOTE:  
ALL EXISTING, NON-STANDARD, WINDOW GRAPHICS AND SIGNAGE  
TO BE REMOVED AND REPLACED WITH NEW STANDARD GRAPHICS.  
FACADE TO BE REPAIRED TO LIKE NEW CONDITIONS.



**KEY NOTES**

2	2" DEEP, FACE-LIT, FABRICATED ALUMINUM CHANNEL LETTERS MOUNTED TO 5" HIGH x 2 3/4" DEEP ALUMINUM RACEWAY. RACEWAY MOUNTED WITH BRACKETS TO MANSARD ROOF.
---	--

**COLORS**

- (A) MATTE WHITE ACRYLIC
- (B) SATIN WHITE TRIM & RETURNS
- (C) TRANSLUCENT POPPY RED 3M 3630-143
- (D) SATIN PMS 485 TRIM & RETURNS
- (E) FACADE/RACEWAY COLOR  
LRV = TBV

**ALIGNMENT INSTRUCTIONS**

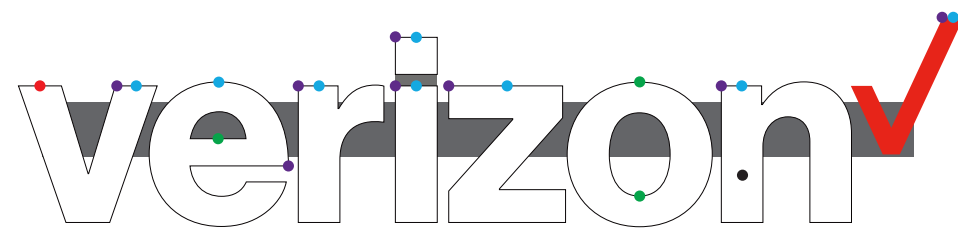
1	ALIGN TOP EDGE OF CROSSBAR OF "e" WITH VERTICAL CENTER
2	ALIGN LEFT EDGE OF "z" WITH HORIZONTAL CENTER

TARGET "V" HEIGHT: 18"  
ACTUAL "V" HEIGHT: 24"

SIGN 1 - ELEVATION  
SCALE 1/2"=1'-0"  
QTY - 1  
SQ. FT. 42.45

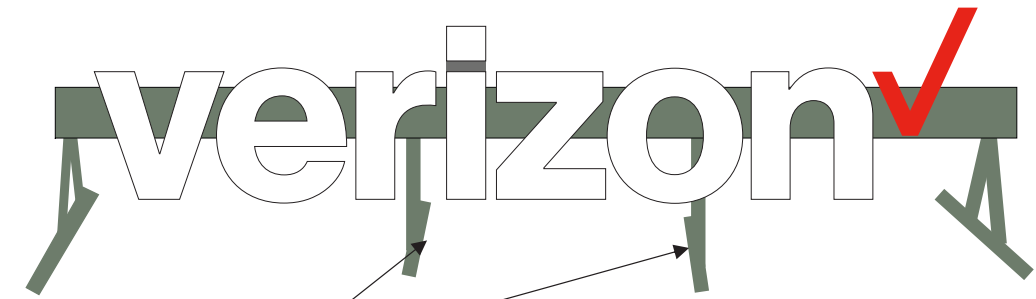






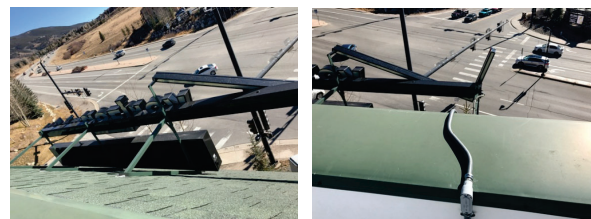
- = Trim Cap Seam (Corner Locations)
- = Trim Cap & Return Seam Location
- = Return Seam Location
- = Use white wire nuts inside the white "verizon"
- = Locate all UL labels at the top of the letter unless required to locate elsewhere by the local jurisdiction

- PMS# COOL GRAY 10
- EXACT COLOR T.B.V. PRIOR TO MANUFACTURE

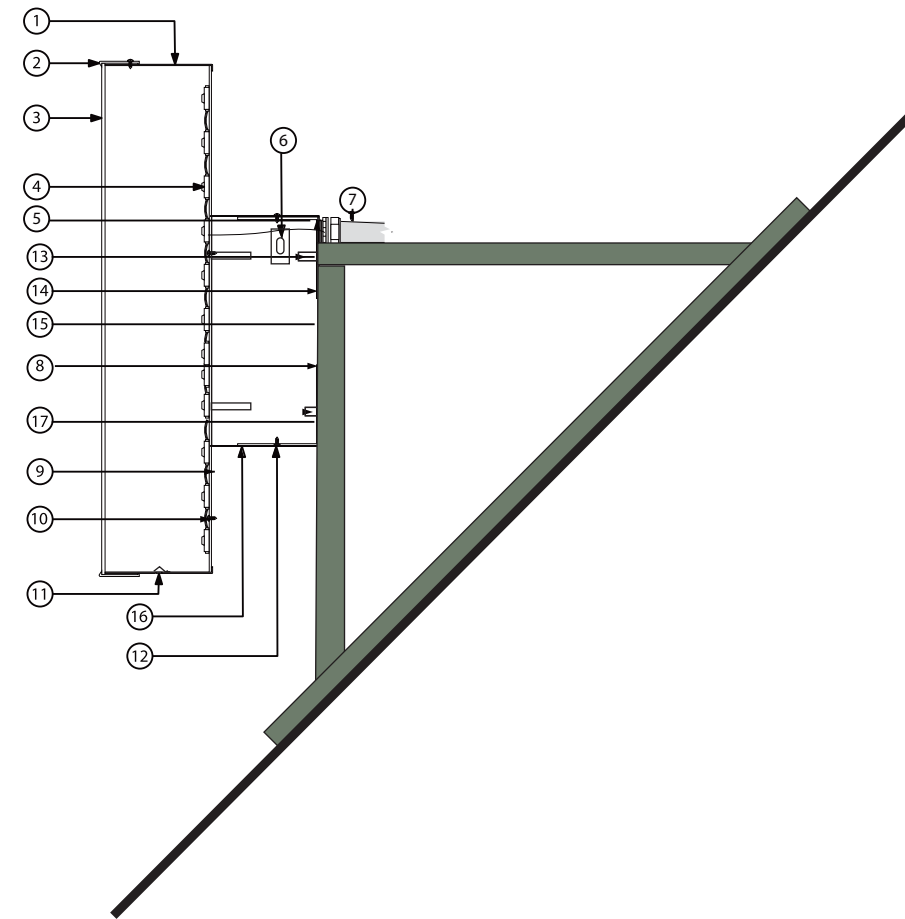


Angle Iron Support Structure To Be Verified By Licensed Engineer Prior to Manufacture.

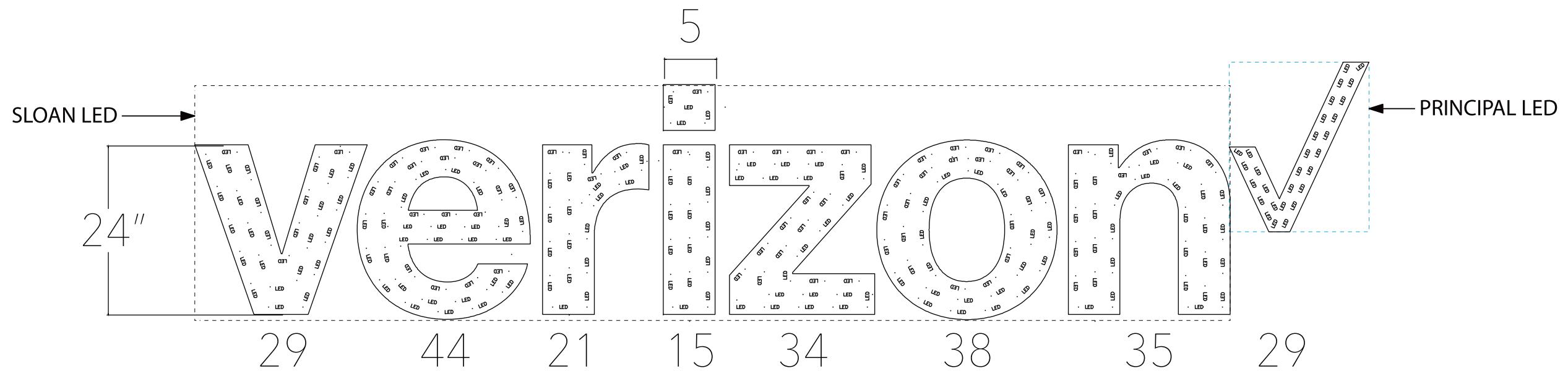
STANDARD RACEWAY	
12	MOUNTING HARDWARE TO SECURE SHOEBOX PANEL: #10 FLAT PAN HEAD SCREW INTO ANGLE FRAME
13	MOUNTING HARDWARE: VARIES ON STRUCTURE (SUPPLIED WITH 3/8" THREADED SPEED CLIPS)
14	ANGLE FRAME MOUNTED TO FACADE: 1-1/2" x 1-1/2" x 1/8" ALUMINUM ANGLE (TOP & BOTTOM)
15	RIVETED VERTICAL ALUMINUM RIBS (3/16" LARGE FLANGE RIVET): 1-1/2" x 1-1/2" x 1/8" ALUMINUM ANGLE (AMOUNT VARIES ON WIDTH)
16	0.090 ALUMINUM SHOEBOX PANEL (2" BREAKS ON TOP & BOTTOM): PAINTED PMS 406C
17	2" x 2" x 1/8" ALUM. ANGLE (END RETURNS) (BONDED W/ 403/19 SIGNLOC): PAINTED PMS 406C



VERIZON LETTERS	
1	0.040 ALUMINUM RETURNS (2" DEPTH): PAINTED MP #6425 SP SATIN HI HIDE WHITE
2	3/4" TRIM CAP: PAINTED MP #6425 SP SATIN HI HIDE WHITE
3	3/16" ACRYLIC FACE: #7328 P95 MATTE ACRYLIC FACE
4	LED UNITS (WHITE): SLOAN PRISM #701269-6WSJ1-MB - 1/4"-1/2" FROM EDGE OF LETTERS
CHECKMARK LOGO	
1	0.040 ALUMINUM RETURNS (2" DEPTH): PAINTED MP #643 SATIN: PMS 485
2	3/4" TRIM CAP: PAINTED MP #643 SATIN: PMS 485
3	3/16" ACRYLIC FACE: #7328 WHITE ACRYLIC WITH APPLIED 3M 3630-143 VINYL
4	LED UNITS (RED): PRINCIPAL PL-FS3 RD1-P
IDENTICAL SPECS	
5	UL LISTED HOUSING: SECONDARY WIRING SPLICE POINT (WHEN NEEDED)
6	UL HOUSING W/ 2 SLOAN 120 D1 DISCONNECT SWITCH FOR DEDICATED PRIMARY POWER CIRCUIT
7	PRIMARY POWER CIRCUIT (PROVIDED/PERMITTED BY OTHERS) TO BE PLACED WITHIN 5 FEET OF CENTER OF SIGN
8	CONDUIT: SECONDARY ELECTRICAL RUN
9	0.063 ALUMINUM BACK: PRECOAT WHITE FINISH
10	MOUNTING HARDWARE: #8 FLAT PAN HEAD SCREW INTO RACEWAY
11	WEEP HOLES WITH ALUMINUM COVERS (BAFFLES)



A1 LETTER SECTION  
SCALE: N.T.S.



**MODULE AMOUNT**

48 MODULES PER POWER SUPPLY (SLOAN 120D1 HAS TWO SECONDARY LEGS EACH 48+48 MODULES)

POWER SUPPLIES = 3 SLOAN 120D1

POWER SUPPLIES WILL BE REQUIRED TO BE INSTALLED IN A POWER SUPPLY BOX

NOT TO SCALE





WHITE & RED VINYL STORE HOURS & ADDRESS TO BE APPLIED TO THE INSIDE OF THE DOOR AND TRANSOM GLASS

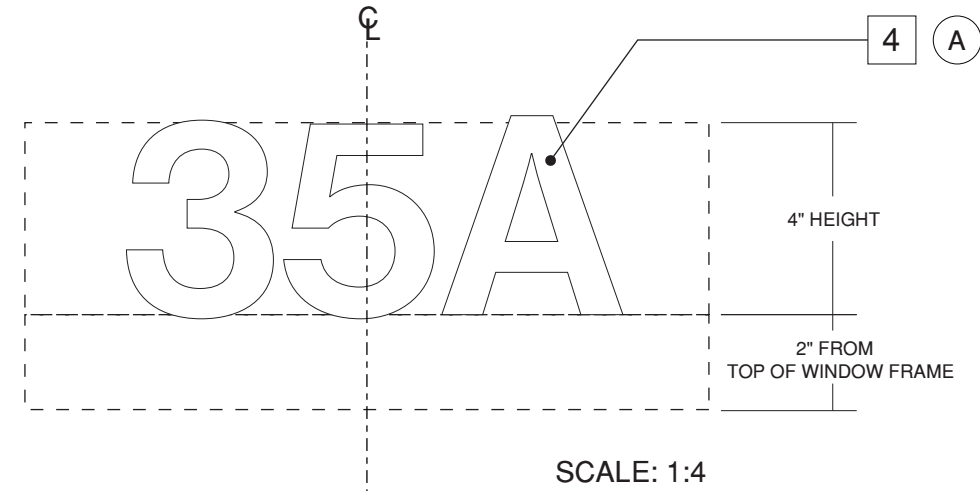
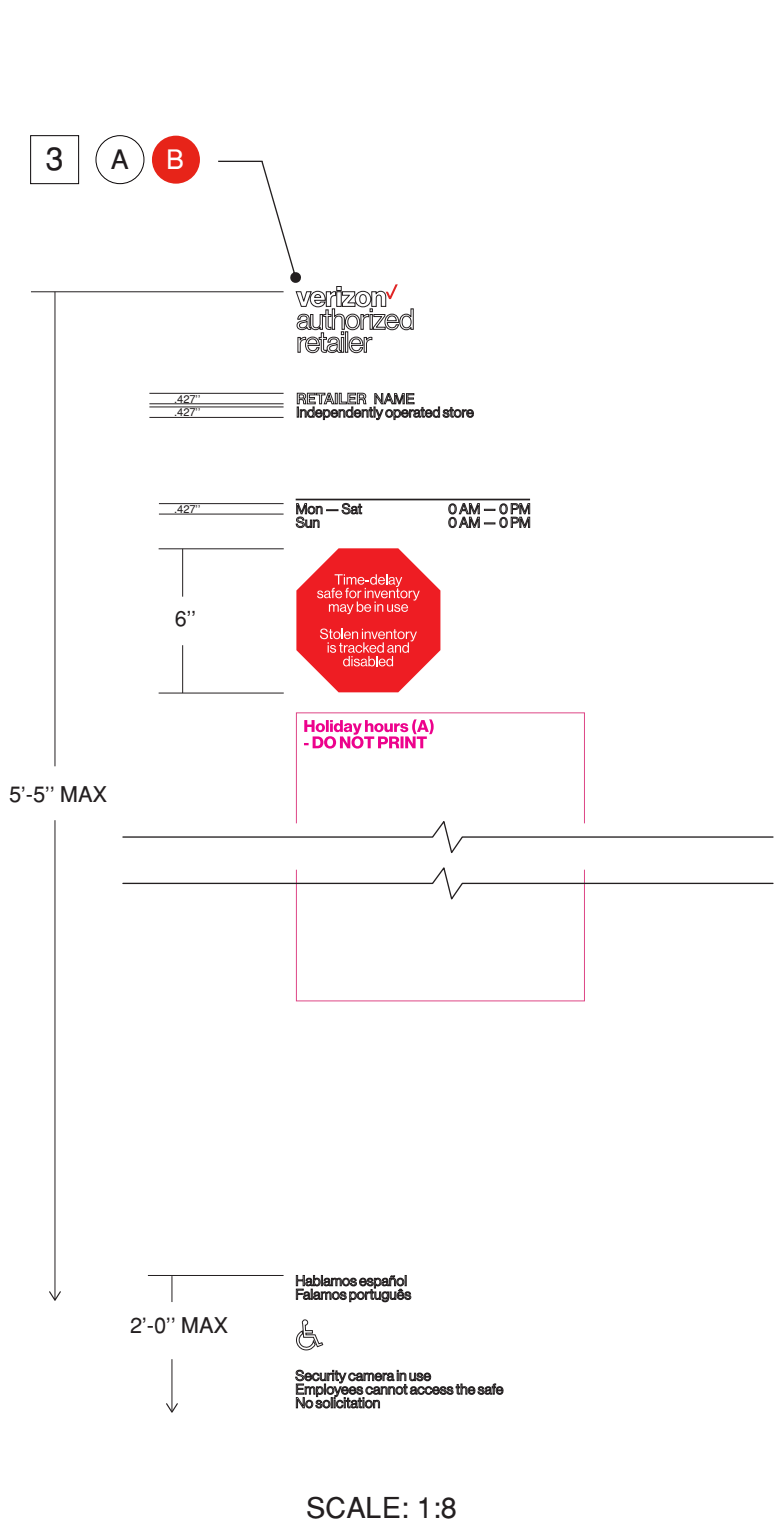


EXISTING CONDITION



REVISED CONDITION





KEY NOTES	QTY
3 WHITE & RED VINYL STORE HOURS APPLIED TO THE INSIDE OF THE GLASS ON THE ENTRANCE DOOR	1
4 4" WHITE VINYL ADDRESS APPLIED TO THE INSIDE OF THE GLASS ON THE TRANSOM WINDOW	1

### COLORS

- A WHITE VINYL
- B RED VINYL 3M #7725-13 TOMATO RED

**CLIENT TO PROVIDE  
CORRECT HOURS  
PRIOR TO PRODUCTION**

