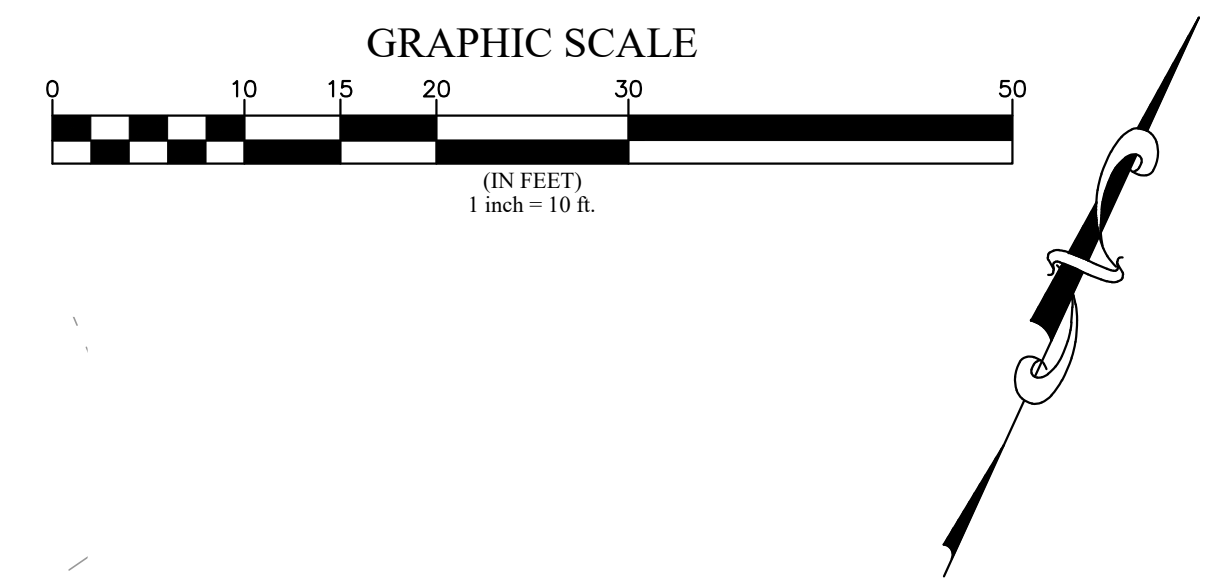


[SEE NEXT SHEET FOR ADDITIONAL DETAIL OF THIS AREA]



**Drainage and Detention Summary**

**Basin:** Dillon Urgent Care

**Existing Conditions** (5 yr storm allowable discharge)

A = Basin Area =	1.02 acres
C <sub>s</sub> = Runoff Coefficient =	0.42
I <sub>3</sub> = Rainfall Intensity =	2.30 (Tc = 10 min)
Q = C * I * A =	0.99 cfs

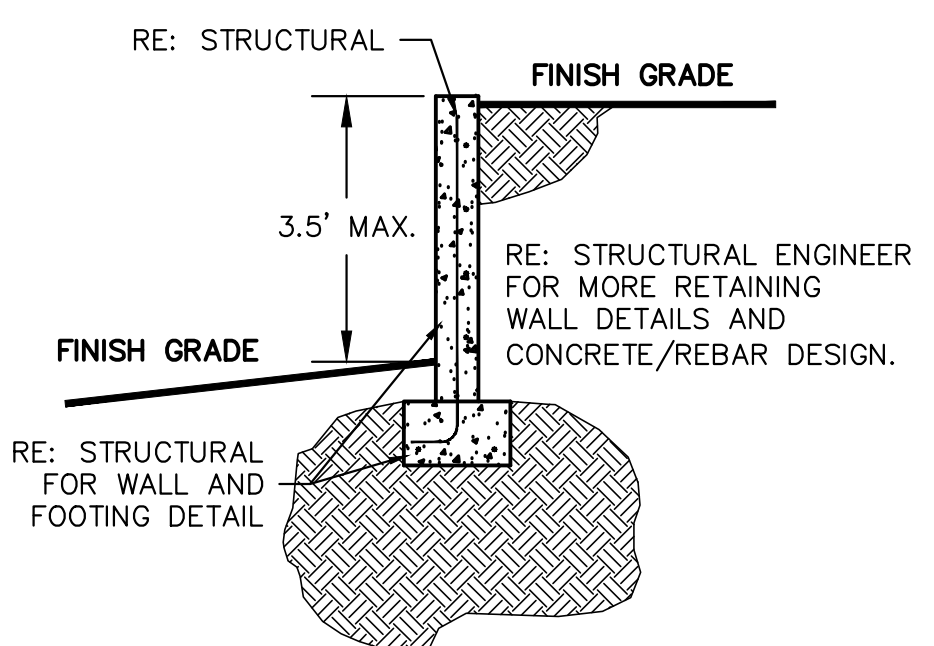
**Proposed Conditions** (100 yr design storm)

Basin Area =	1.02 acres
C <sub>100</sub> =	0.90

**Storage Calculations**

Vol In = C \* I \* A \* Duration <- Proposed Conditions  
 Vol Out = (Q) \* Duration <- Existing Conditions  
 Vol Stored = Vol In - Vol Out

Duration (min)	I <sub>100</sub> yr	Vol In (cf)	Vol Out (cf)	Vol Stored (cf)
5	5.88	1619	296	1324
10	4.31	2374	591	1783
15	3.50	2892	887	2005
20	3.07	3382	1182	2200
25	2.64	3635	1478	2157
30	2.21	3652	1774	1878
60	1.24	4098	3547	551



NOTE: RETAINING WALL DESIGN IS LINE AND GRADE ONLY. DETAILED CONCRETE RETAINING WALL STRUCTURAL DESIGN IS TO BE PROVIDED BY A STRUCTURAL ENGINEER REGISTERED IN THE STATE OF COLORADO.

MARCIN ENGINEERING LLC  
 130 Ski Hill Road, #235  
 BRECKENRIDGE, COLORADO  
 970-771-3459

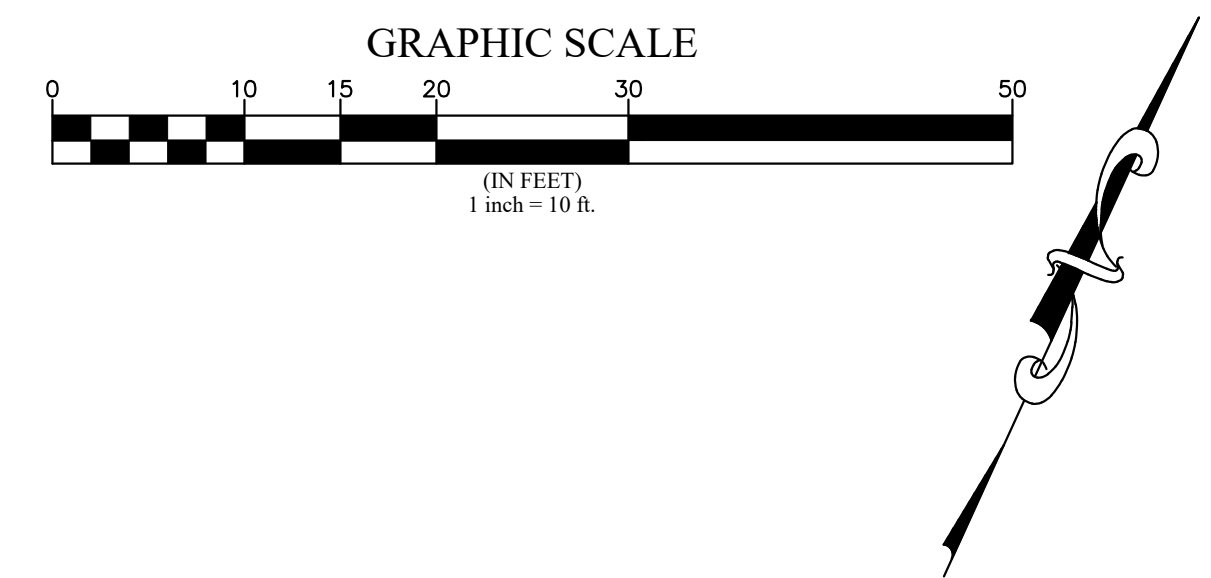
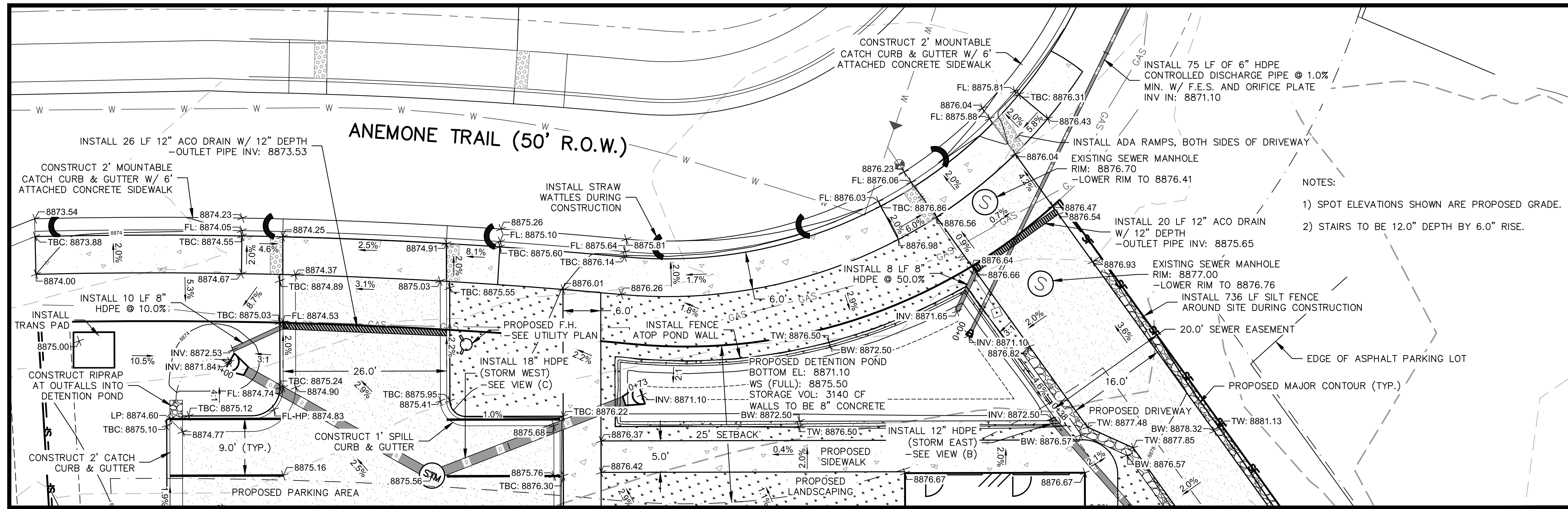
**GRADING AND DRAINAGE PLAN**  
**DILLON URGENT CARE AND RESIDENCES**  
**TOWN OF DILLON, COLORADO**

NO. DATE REVISIONS BY

JOB: 18021  
 DATE: 07/29/2020  
 SCALE: 1" = 10'

**SHEET C-3**

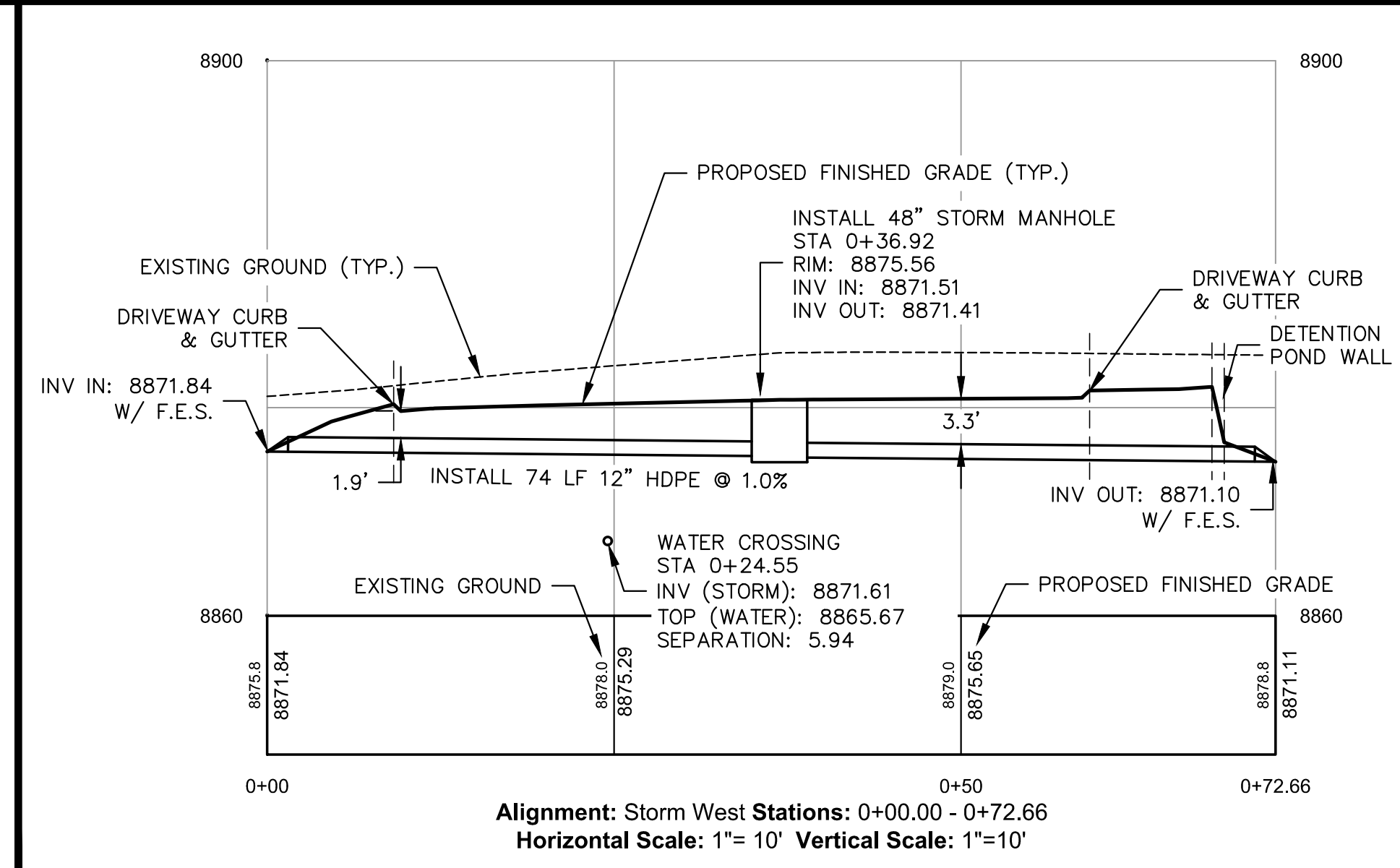
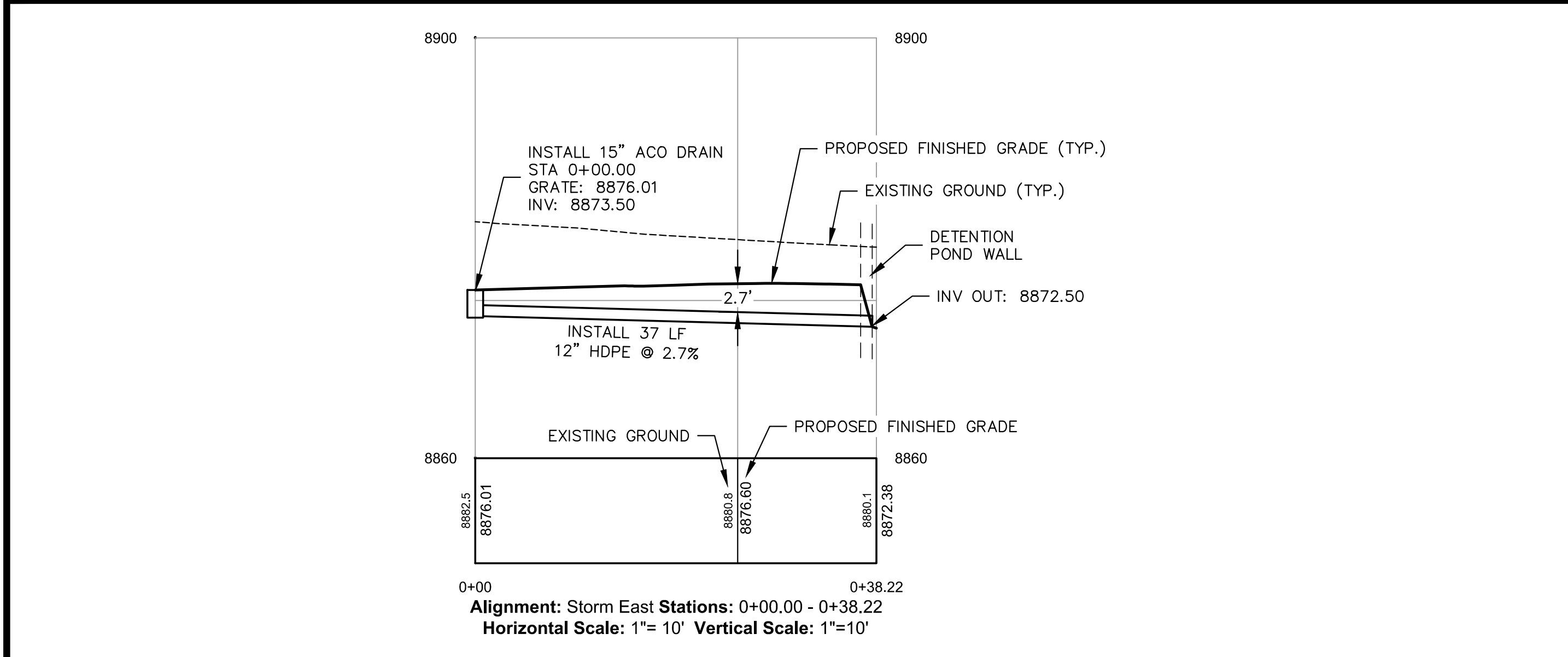
**PRELIMINARY - FOR TOWN REVIEW ONLY**



MARCIN ENGINEERING LLC  
 130 Ski Hill Road, #235  
 BRECKENRIDGE, COLORADO  
 970-771-3459

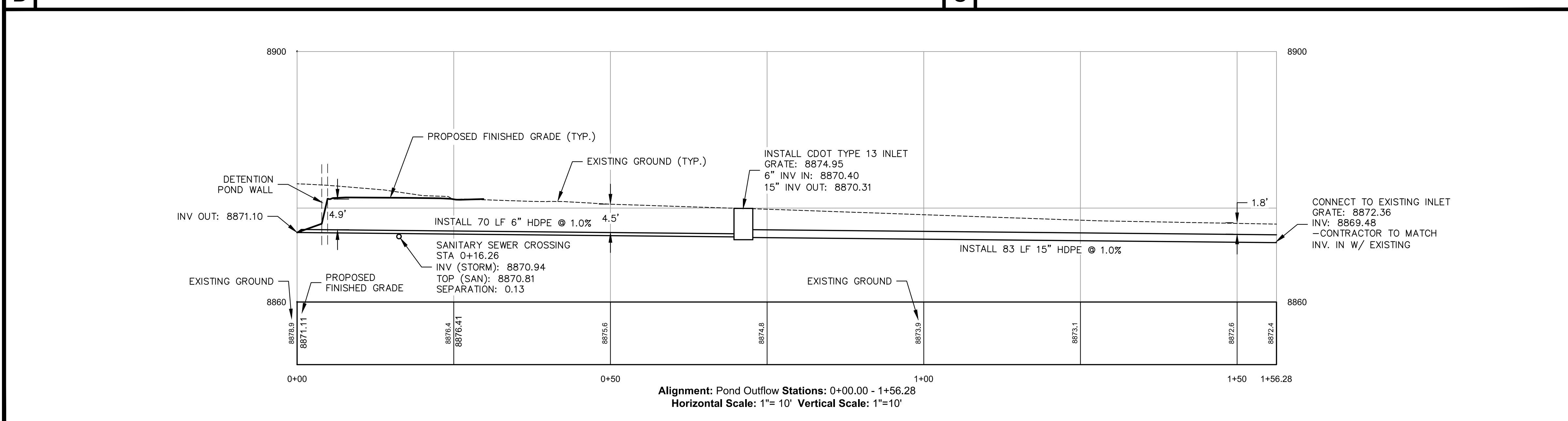
GRADING AND DRAINAGE PLAN - NORTHERN DETAIL  
 STORM PIPE PROFILES  
 DILLON URGENT CARE AND RESIDENCES  
 TOWN OF DILLON, COLORADO

**A** GRADING AND DRAINAGE PLAN - NORTHERN DETAIL



**B** STORM EAST PROFILE

**C** STORM WEST PROFILE



**D** POND OUTLET STORM PROFILE

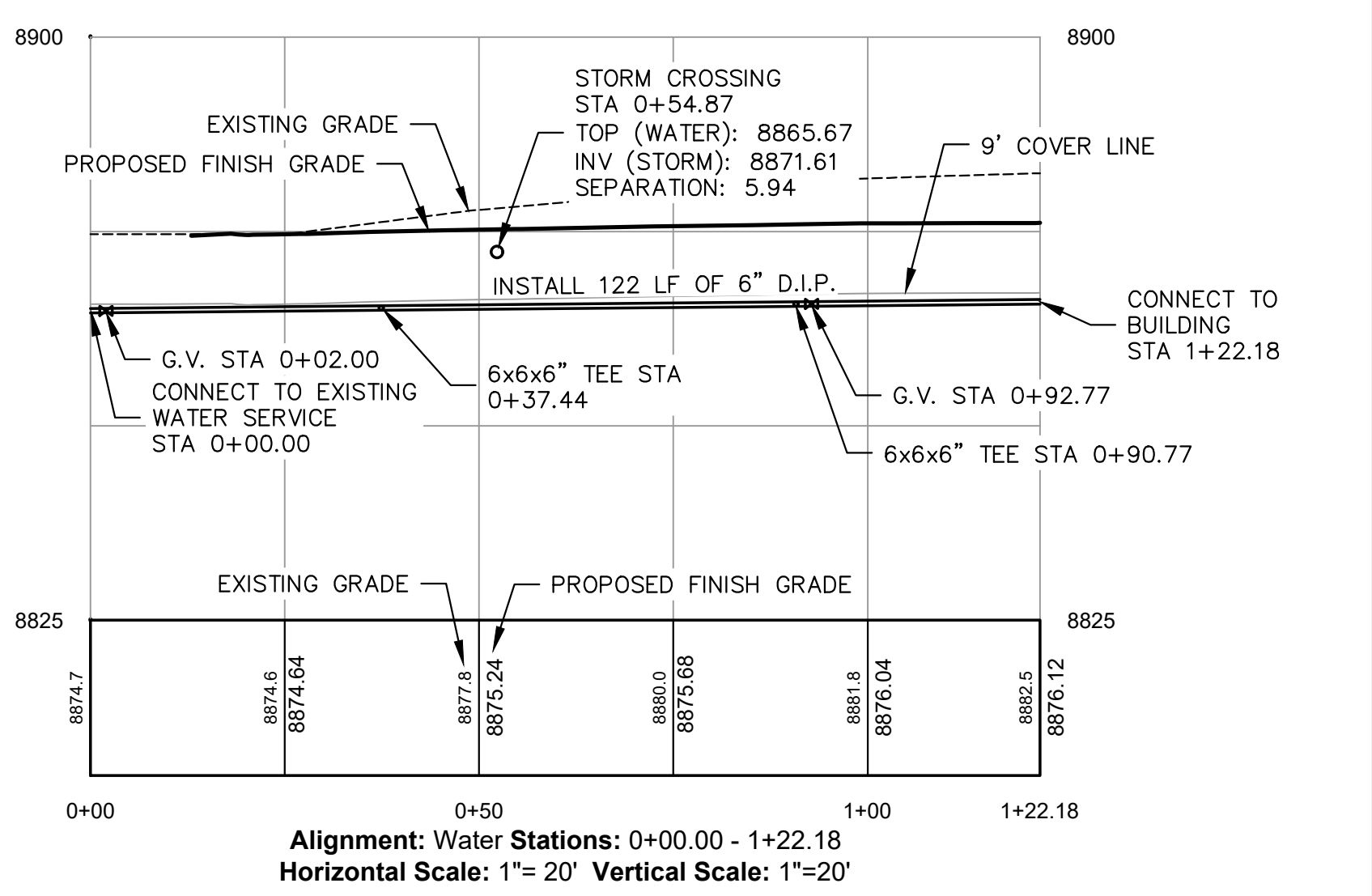
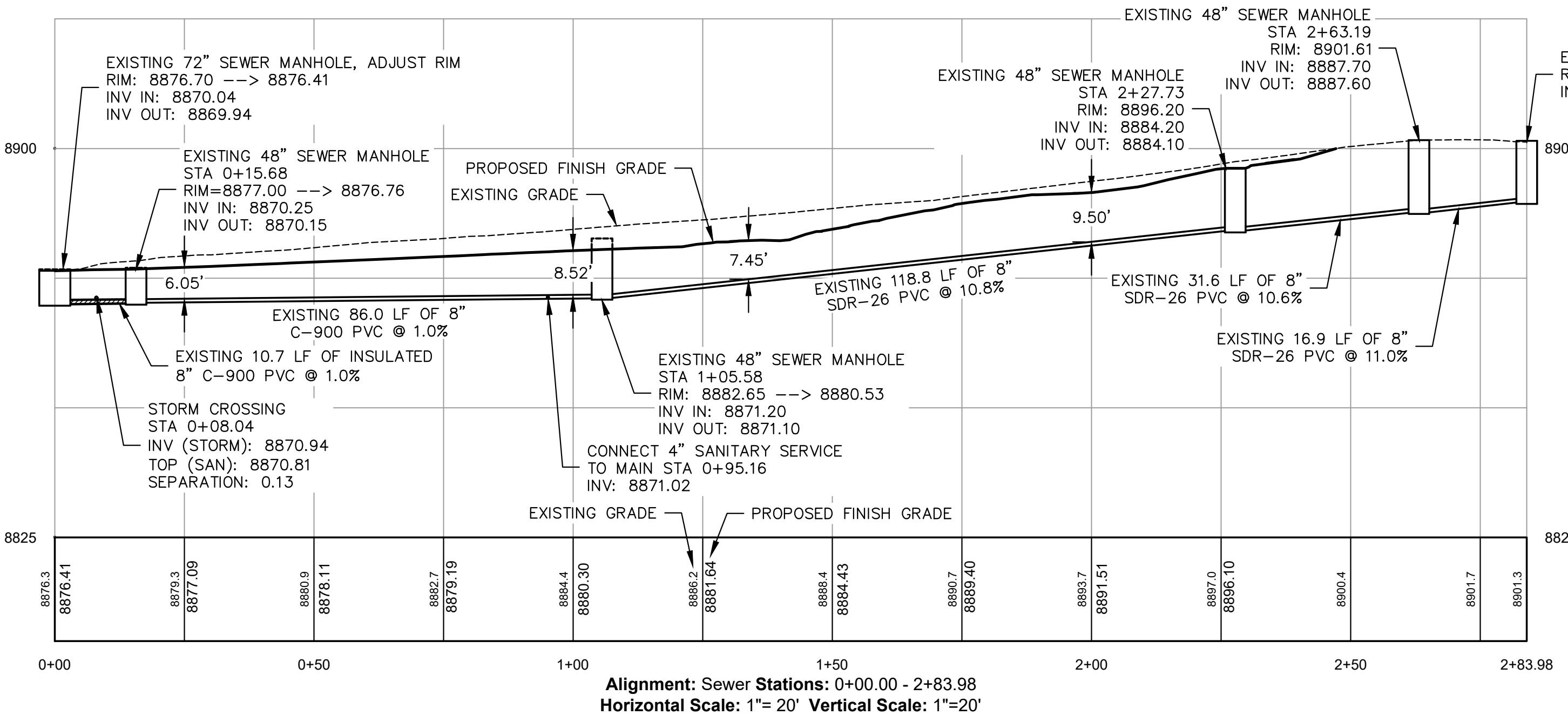
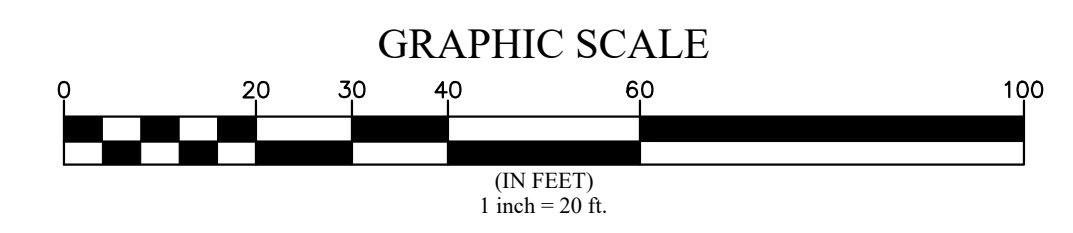
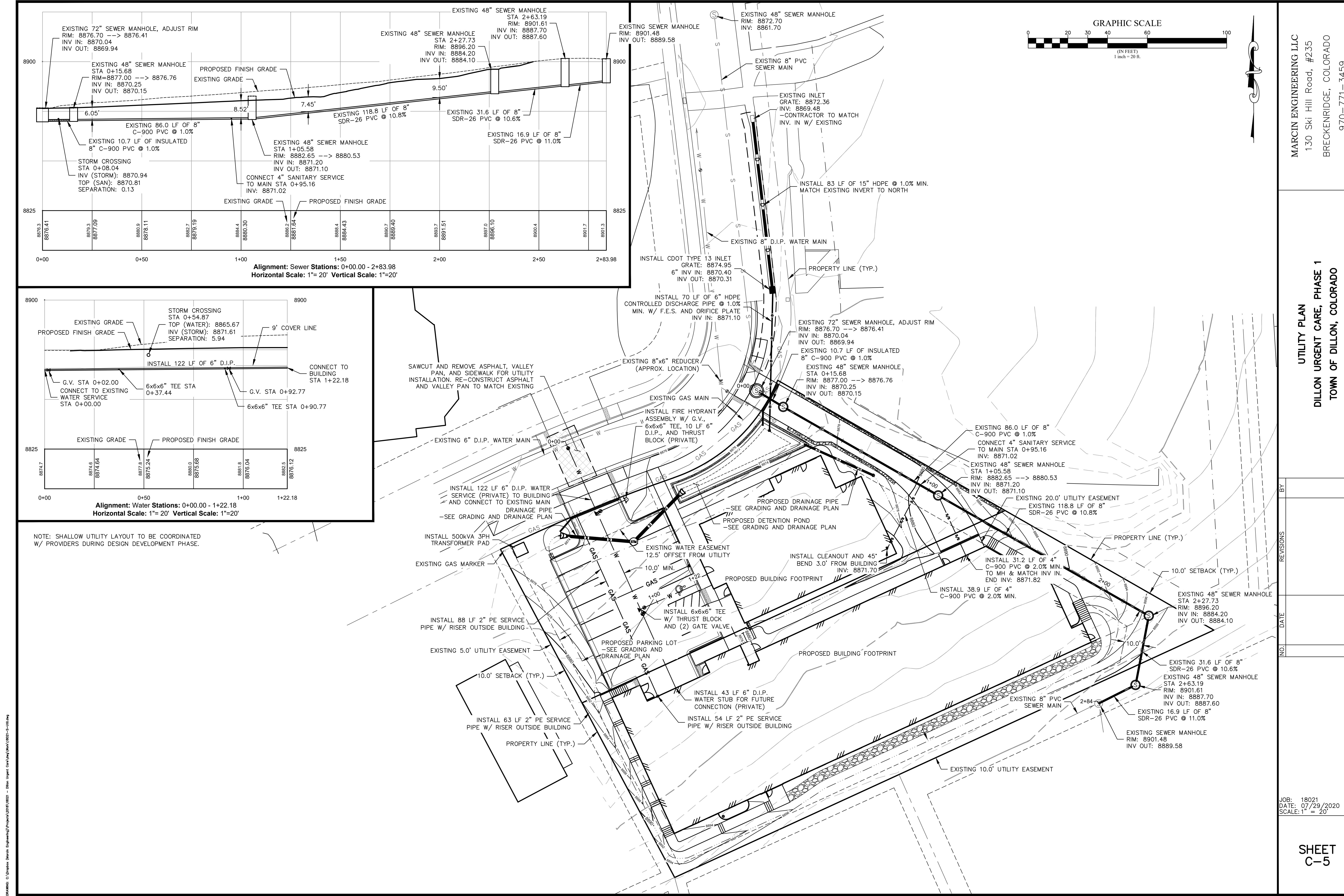
NO.	DATE	REVISIONS	BY

JOB: 18021  
 DATE: 07/29/2020  
 SCALE: 1" = 10'

SHEET  
 C-4

PRELIMINARY - FOR TOWN REVIEW ONLY

DRAWING: C:\projects\18021\18021.dwg - Dillon Urgent Care\Residences\Storm\18021-Storm.dwg



NOTE: SHALLOW UTILITY LAYOUT TO BE COORDINATED W/ PROVIDERS DURING DESIGN DEVELOPMENT PHASE.

MARCIN ENGINEERING LLC  
130 Ski Hill Road, #235  
BRECKENRIDGE, COLORADO  
970-771-3459

UTILITY PLAN  
DILLON URGENT CARE, PHASE 1  
TOWN OF DILLON, COLORADO

NO.	DATE	BY	REVISIONS

JOB: 18021  
DATE: 07/29/2020  
SCALE: 1" = 20'

SHEET  
C-5

DRAWING: C:\projects\marcin\engineering\projects\2018\18021 - Dillon Urgent Care\Utility\Sheet\C-5-1181.dwg