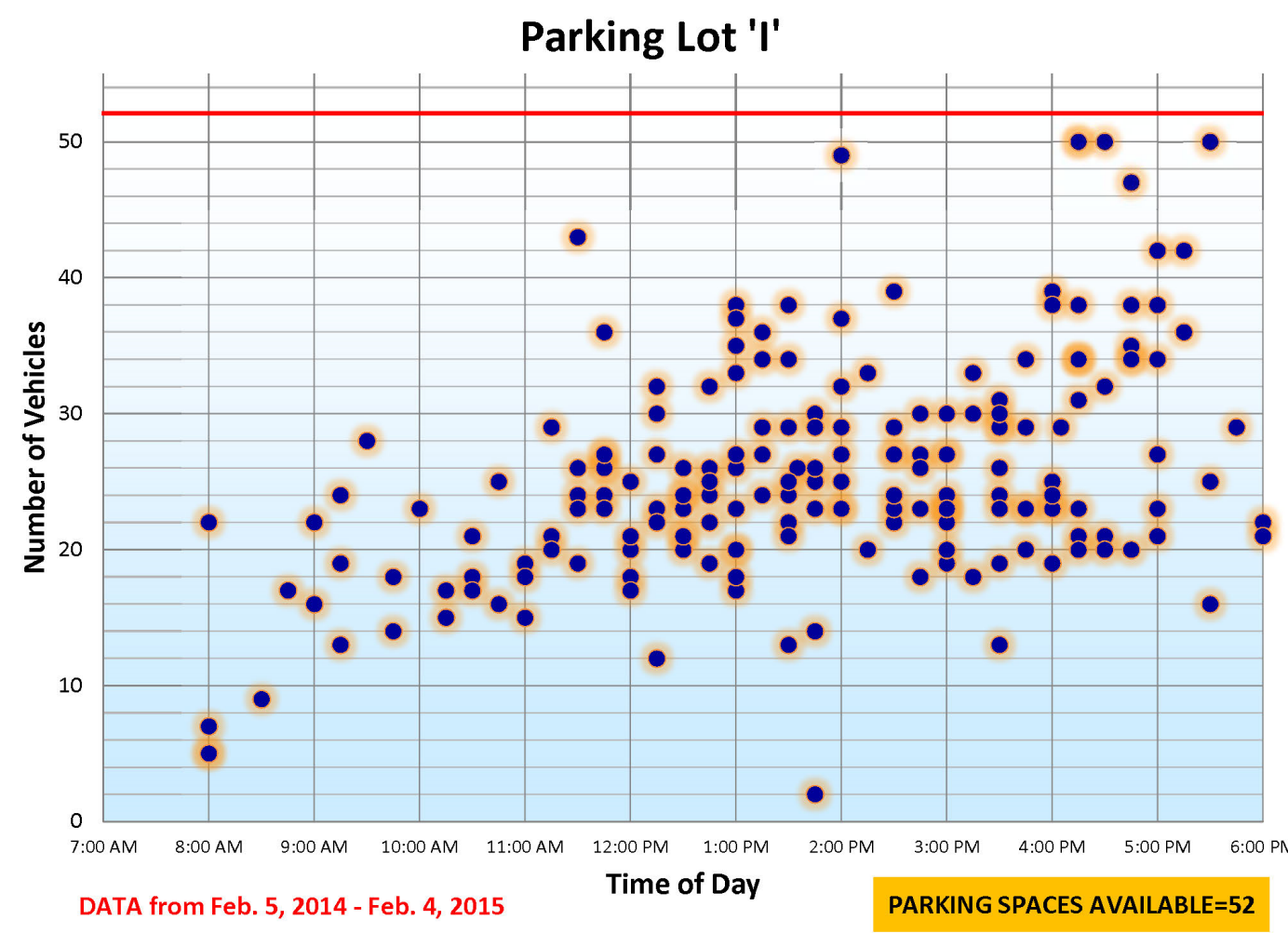
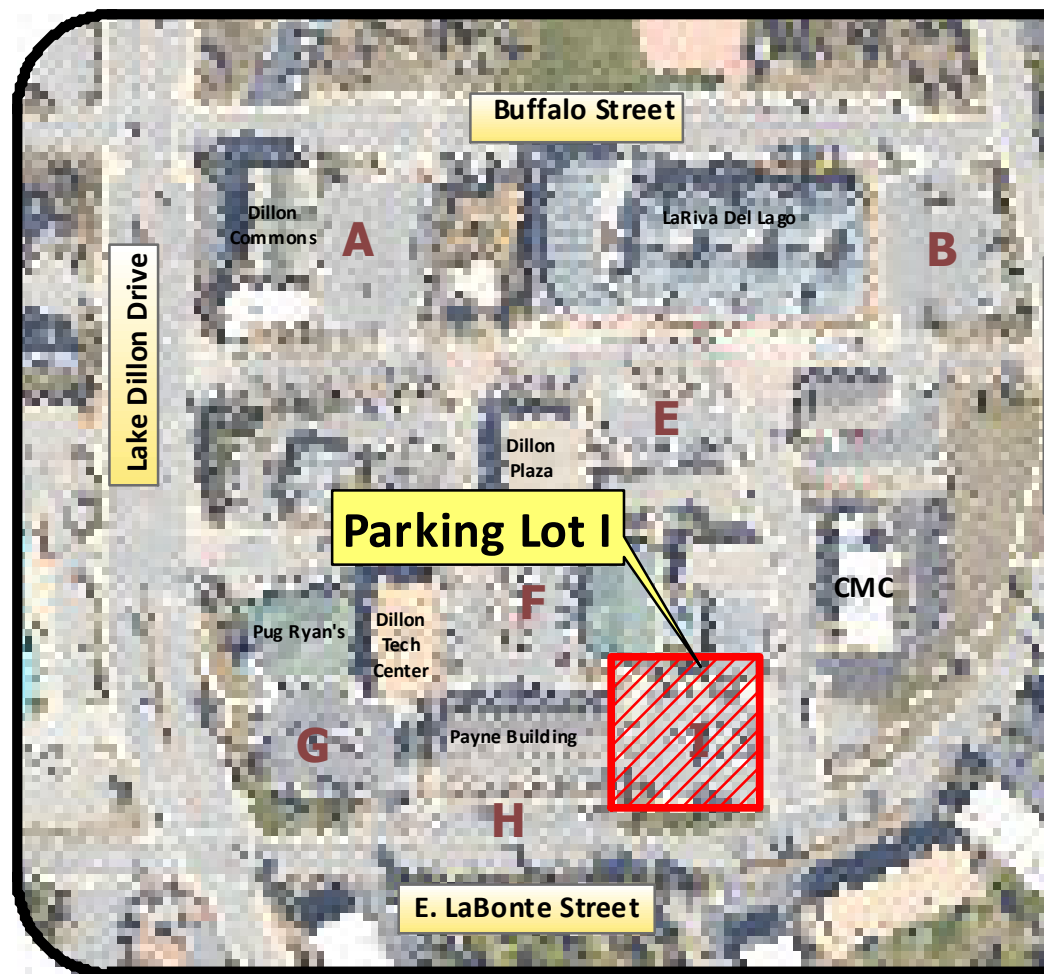




Dillon Town Center Revitalization

Parking Lot 'I'



Parking Study Notes:
 Parking Lot 'I' was shown to be Heavily used.
 30-40 Spaces are required



Key Design Concepts

CREATE NEW DEVELOPABLE LOT	This design creates a new lot, SE-1, at the southeast corner of Parking Lot I.
REVISED PARKING	The new 'L' shaped design allows for better through access and maintains an open feel between buildings. 39 Parking spaces will be in the lot. 5 parallel parking spaces will be installed along Lot SE-1 on the streets. 44 spaces provided. Net Loss= -8 spaces
IMPROVE ACCESSIBLE PARKING	This proposed reconfigurations allows an accessible space to be built in front of each of the existing and the new buildings.
ADD TRASH ACCESS	The trash enclosure will be relocated in this parking lot to serve this part of the Town Center.

