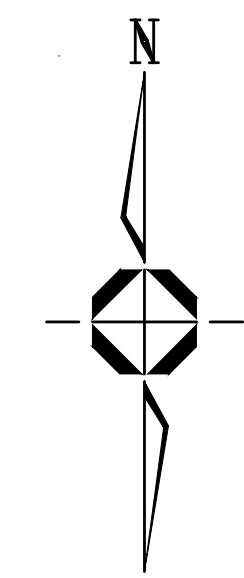


PAVEMENT SECTION SHALL BE  
3" ASPHALT ON 6" OF ROAD BASE  
SEE GEOTECHNICAL RECOMMENDATIONS  
FOR COMPACTION REQUIREMENTS  
SECTION TO BE FIELD VERIFIED BY  
GEOTECHNICAL ENGINEER

**TYPICAL PAVEMENT SECTION**  
NO SCALE

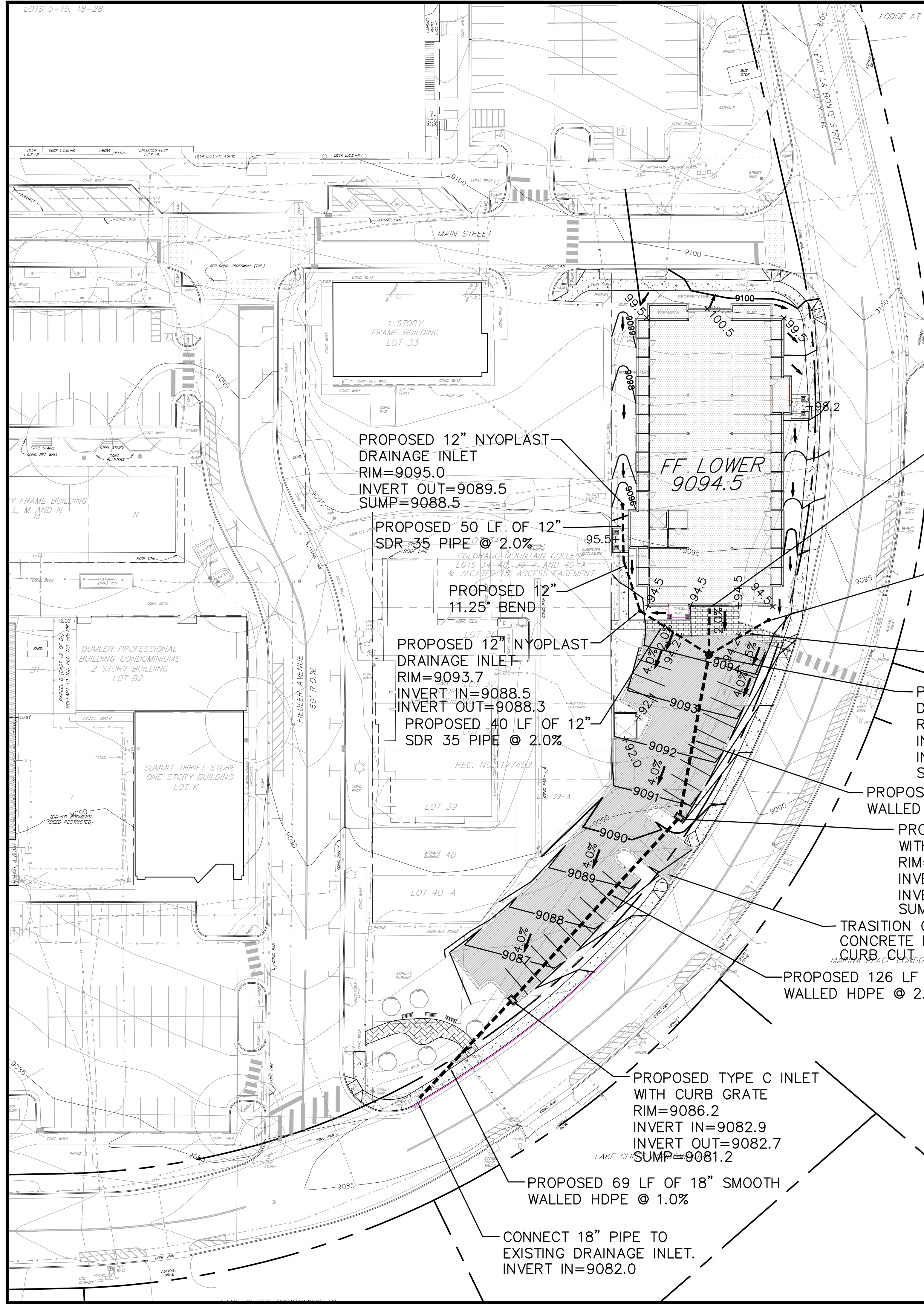
**LEGEND**

- SANITARY MANHOLE
- RIPRAP
- ⊕ STORM INLET
- ⊕ STORM FES
- ⊕ STORM MANHOLE
- ⊕ WATER FIRE HYDRANT
- ⊕ WATER MANHOLE
- ⊕ WATER VALVE
- ⊕ WATER STOPBOX
- ⊕ ELECTRIC BREAKER BOX
- ⊕ ELECTRIC METER
- ⊕ ELECTRIC MKR
- ⊕ ELECTRIC PEDESTAL
- ⊕ LIGHT POLE
- ⊕ ELECTRIC VAULT
- ⊕ TELEPHONE PEDESTAL
- ⊕ FIBER OPTIC MKR
- ⊕ FIBER OPTICS PEDESTAL
- ⊕ GAS MKR POST
- ⊕ IRRIGATION CONTROL BOX
- ⊕ IRRIGATION VALVE
- ⊕ VENT PIPE
- ⊕ BUSH EVERGREEN
- ⊕ BUSH DECIDUOUS
- ⊕ TREE CONIFER
- ⊕ TREE DECIDUOUS
- ⊕ HANDICAP RAMP
- ⊕ TRAFFIC CONTROL CABINET
- ⊕ TRAFFIC CONTROL VAULT
- ⊕ TRAFFIC SIGNAL
- ⊕ DELINEATOR
- ⊕ SIGN
- ⊕ ELECTRIC UNDERGROUND
- ⊕ TELEPHONE LINE UNDERGROUND
- ⊕ FIBER OPTIC UNDERGROUND
- ⊕ CABLE TV UNDERGROUND
- ⊕ GAS LINE UNDERGROUND
- ⊕ STORM REINFORCED CONCRETE PIPE
- ⊕ WATER LINE UNDERGROUND
- ⊕ SANITARY UNDERGROUND
- ⊕ FENCE
- ⊕ LANDSCAPE EDGE
- ⊕ TRELISE
- ⊕ CROWN ROAD
- ⊕ EDGE ASPHALT
- ⊕ EDGE CONCRETE
- ⊕ TRAIL
- ⊕ CHASE
- ⊕ PAN FLOWLINE
- ⊕ LINEMARKING WHITE STRIPE SOLID
- ⊕ LINEMARKING YELLOW STRIPE SOLID
- ⊕ GUARD RAIL
- ⊕ SPEED BUMP
- ⊕ STEPS
- ⊕ STRUCTURE
- ⊕ HANDRAIL
- ⊕ WALL
- CONCRETE
- ASPHALT PAVEMENT



CALL UTILITY NOTIFICATION  
CENTER OF COLORADO  
**811**  
CALL 2 BUSINESS DAYS IN ADVANCE  
BEFORE YOU DIG, GRADE OR EXCAVATE  
FOR THE MARKING OF UNDERGROUND  
MEMBER UTILITIES.

SCALE: 1" = 30'  
ORIGINAL GRAPHIC SCALE



PROPOSED 12" NYOPLAST  
DRAINAGE INLET  
RIM=9095.0  
INVERT OUT=9089.5  
SUMP=9088.5

PROPOSED 50 LF OF 12"  
SDR 35 PIPE @ 2.0%

PROPOSED 12"  
11.25' BEND

PROPOSED 12" NYOPLAST  
DRAINAGE INLET  
RIM=9093.7  
INVERT IN=9088.5  
INVERT OUT=9088.3

PROPOSED 40 LF OF 12"  
SDR 35 PIPE @ 2.0%

FF. LOWER  
9094.5

PROPOSED 20 LF 12" SDR 35  
DRAINAGE PIPE STUB @ 2.0%.  
CONTRACTOR TO COORDINATE  
CONNECTION TO ROOF AND  
GARAGE DRAINS. SEE MECHANICAL  
PLANS FOR DETAILS OF SAND/OIL  
SEPARATOR.

PROPOSED 12" NYOPLAST  
DRAINAGE INLET  
RIM=9093.5  
INVERT OUT=9088.6  
SUMP=9087.6

PROPOSED 36 LF OF 12"  
SDR 35 PIPE @ 3%

PROPOSED 4' DIA.  
DRAINAGE INLET  
RIM=9094.0  
INVERT IN=9087.5  
INVERT OUT=9087.3  
SUMP=9085.8

PROPOSED 85 LF OF 18" SMOOTH  
WALLED HDPE @ 2.0%

PROPOSED TYPE C INLET  
WITH CURB GRATE  
RIM=9090.7  
INVERT IN=9085.6  
INVERT OUT=9085.4  
SUMP=9083.9

TRANSITION CURB AND GUTTER TO 4'  
CONCRETE PANPER TOWN OF DILLON  
CURB CUT DETAIL-MATCH ROAD GRADE

PROPOSED 126 LF OF 18" SMOOTH  
WALLED HDPE @ 2.0%

**NOTE:**  
1) ALL STORM SEWER SHOWN IS PRIVATE AND SHALL BE  
MAINTAINED BY THE DILLON FLATS HOA.  
2) ALL CONCRETE SIDEWALKS, PANS, CURB AND GUTTER  
AND RAMPS TO BE CONSTRUCTED PER TOWN OF DILLON  
SPECIFICATIONS AND DETAILS.

PROPOSED TYPE C INLET  
WITH CURB GRATE  
RIM=9086.2  
INVERT IN=9082.9  
INVERT OUT=9082.7  
SUMP=9081.2

PROPOSED 69 LF OF 18" SMOOTH  
WALLED HDPE @ 1.0%

CONNECT 18" PIPE TO  
EXISTING DRAINAGE INLET.  
INVERT IN=9082.0

Revision/Issue	Date	Description
2	7/25/17	REVISED PER TOD COMMENTS
1	7/7/17	TOD FINAL SITE PLAN & PLAT SUBMITTAL

**TEN MILE ENGINEERING, INC.**  
Professional Civil Engineers  
Po Box 1785  
Frisco, CO 80443  
970.485.5773  
tenmileengineer@aol.com

**DILLON FLATS**  
LOTS 17A & 17B  
TOWN OF DILLON, COLORADO  
**OVERALL GRADING PLAN**

Project DILLON FLATS	
Date 7/7/17	Sheet 8
Scale 1"=30'	