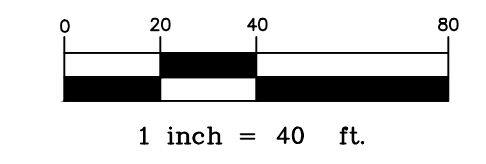
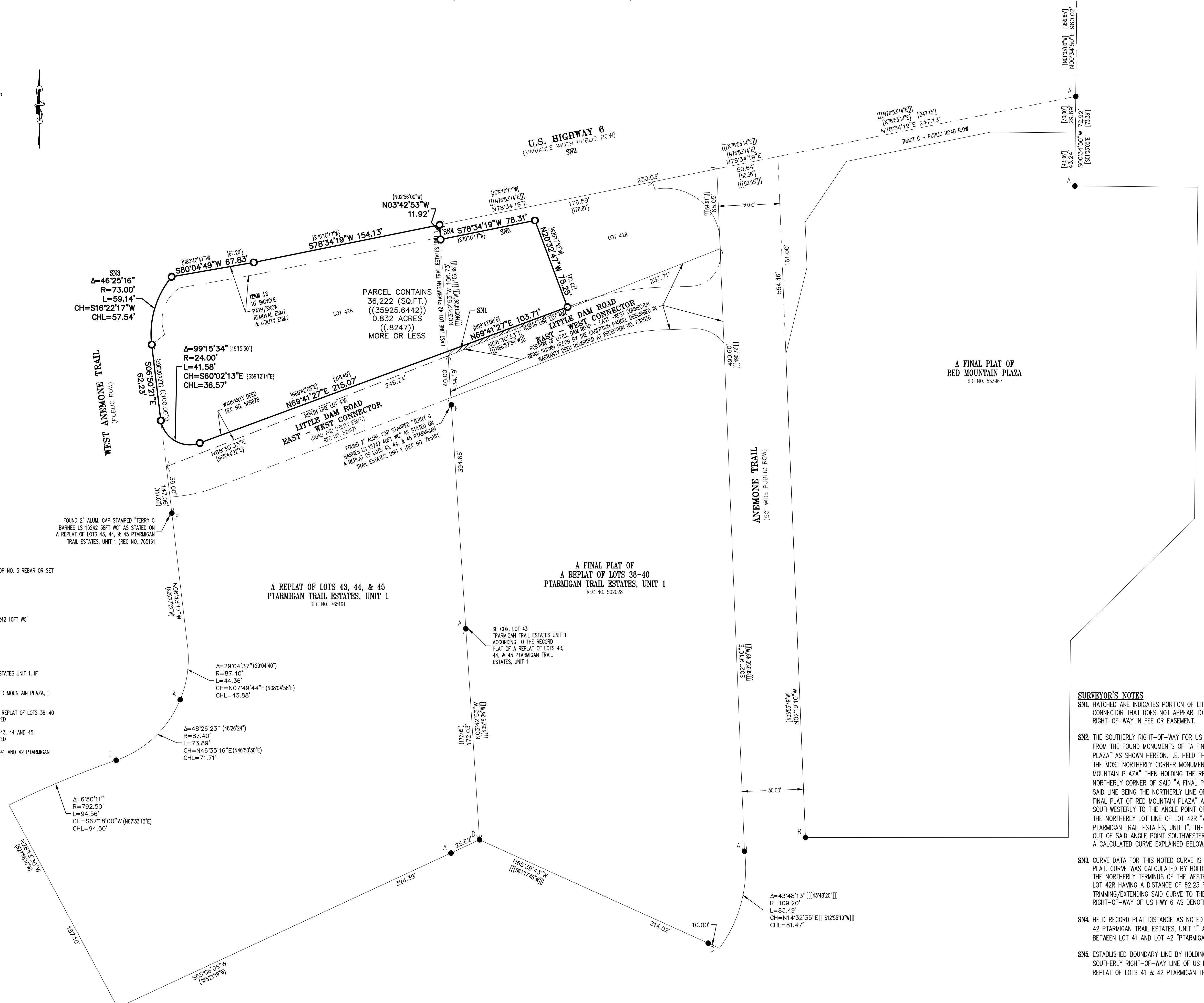


ALTA/NSPS LAND TITLE SURVEY

A PARCEL LOCATED IN SECTION 7,
TOWNSHIP 5 SOUTH, RANGE 77 WEST OF THE SIXTH PRINCIPAL MERIDIAN,
TOWN OF DILLON, COUNTY OF SUMMIT, STATE OF COLORADO



C-W 1/16 SEC. 7, T5S, R77W, 6TH P.M.
FOUND 3-1/4" BRASS CAP STAMPED "DWO LS16398
1994" W/ PROPER SECTIONAL STAMPING 0.3±
BELOW SURFACE IN MONUMENT BOX PER MONUMENT
RECORD FILED 12/26/2008 BY LS 23519



- BOUNDARY LEGEND**
- ▲ ALIQUOT MONUMENT AS NOTED
 - SET 1-1/4" RED PLASTIC CAP STAMPED "AZTEC LS 38256" ATOP NO. 5 REBAR OR SET 1" BRASS TAG STAMPED "AZTEC LS 38256"
 - A FOUND 1" RED PLASTIC CAP STAMPED "TC BARNES PLS 15242"
 - B FOUND 3-1/4" BRASS CAP STAMPED "LS 16398 DWO"
 - C FOUND 2" ALUMINUM CAP STAMPED "TERRY C. BARNES LS 15242 10FT WC"
 - D FOUND NO. 3 REBAR W/ NO CAP
 - E FOUND NO. 4 REBAR W/ NO CAP
 - F FOUND MONUMENT AS NOTED
 - (---) INDICATES RECORD PLAT INFORMATION PER PTARMIGAN TRAIL ESTATES UNIT 1, IF DIFFERENT THAN MEASURED
 - [---] INDICATES RECORD PLAT INFORMATION PER A FINAL PLAT OF RED MOUNTAIN PLAZA, IF DIFFERENT THAN MEASURED
 - [[---]] INDICATES RECORD PLAT INFORMATION PER A FINAL PLAT OF A REPLAT OF LOTS 38-40 PTARMIGAN TRAIL ESTATES, UNIT 1, IF DIFFERENT THAN MEASURED
 - (---) INDICATES RECORD PLAT INFORMATION PER A REPLAT OF LOTS 43, 44 AND 45 PTARMIGAN TRAIL ESTATES, UNIT 1, IF DIFFERENT THAN MEASURED
 - {---} INDICATES RECORD PLAT INFORMATION PER A REPLAT OF LOTS 41 AND 42 PTARMIGAN TRAIL ESTATES, UNIT 1, IF DIFFERENT THAN MEASURED
 - SN# SURVEYOR'S NOTES - SEE BOTTOM RIGHT

SURVEYOR'S NOTES

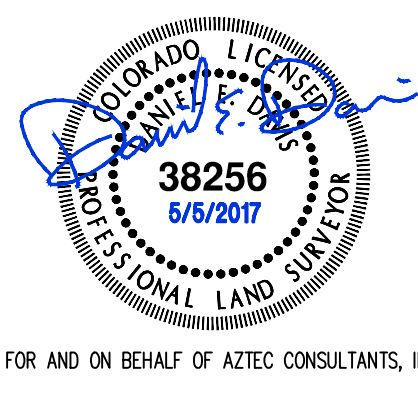
SN1: HATCHED ARE INDICATES PORTION OF LITTLE DAM ROAD, EAST-WEST CONNECTOR THAT DOES NOT APPEAR TO BE DEDICATED AS RIGHT-OF-WAY IN FEE OR EASEMENT.

SN2: THE SOUTHERLY RIGHT-OF-WAY FOR US HWY 6 WAS ESTABLISHED FROM THE FOUND MONUMENTS OF "A FINAL PLAT OF RED MOUNTAIN PLAZA" AS SHOWN HEREON. I.E. HELD THE CENTER WEST 1/16TH AND THE MOST NORTHERLY CORNER MONUMENT FOR "A FINAL PLAT OF RED MOUNTAIN PLAZA" THEN HOLDING THE RECORD ANGLE FROM SAID MOST NORTHERLY CORNER OF SAID "A FINAL PLAT OF RED MOUNTAIN PLAZA" SAID LINE BEING THE NORTHERLY LINE OF TRACT C AS DEPICTED ON "A FINAL PLAT OF RED MOUNTAIN PLAZA" AND EXTENDING SAID LINE SOUTHWESTERLY TO THE ANGLE POINT OF US HWY 6 AS PERTAINING TO THE NORTHERLY LOT LINE OF LOT 42R "A REPLAT OF LOTS 41&42 PTARMIGAN TRAIL ESTATES, UNIT 1", THEN HELD THE RECORD ANGLE OUT OF SAID ANGLE POINT SOUTHWESTERLY TO THE INTERSECTION OF A CALCULATED CURVE EXPLAINED BELOW.

SN3: CURVE DATA FOR THIS NOTED CURVE IS MISSING FROM THE RECORD PLAT. CURVE WAS CALCULATED BY HOLDING A TANGENT CURVE FROM THE NORTHERLY TERMINUS OF THE WESTERLY LINE NOTED HEREON FOR LOT 42R HAVING A DISTANCE OF 62.23 FEET, THEN TRIMMING/EXTENDING SAID CURVE TO THE CALCULATED SOUTHERLY RIGHT-OF-WAY OF US HWY 6 AS DENOTED ABOVE IN SN2.

SN4: HELD RECORD PLAT DISTANCE AS NOTED ON "A REPLAT OF LOTS 41 & 42 PTARMIGAN TRAIL ESTATES, UNIT 1" ALONG THE ORIGINAL LOT LINE BETWEEN LOT 41 AND LOT 42 "PTARMIGAN TRAIL ESTATES".

SN5: ESTABLISHED BOUNDARY LINE BY HOLDING PARALLEL WITH THE SOUTHERLY RIGHT-OF-WAY LINE OF US HWY 6 AS DEPICTED ON "A REPLAT OF LOTS 41 & 42 PTARMIGAN TRAIL ESTATES, UNIT 1"



FOR AND ON BEHALF OF AZTEC CONSULTANTS, INC.

SCALE	1" = 40'
DATE	08-18-2015
BY	
DATE	
REVISION DESCRIPTION	
APPV	
DATE	

AZTEC
 CONSULTANTS, INC.
 300 East Mineral Ave., Suite 1
 Littleton, Colorado 80122
 Phone: (303) 713-1898
 Fax: (303) 713-1897
 www.aztecconsultants.com

EXHIBIT A
 CHRISTY SPORTS
 TOWN OF DILLON
 SUMMIT COUNTY, COLORADO
 PREPARED FOR
 REDLAND
 1500 West Canal Court, Littleton, CO 80120

SHEET
2
 OF 3 SHEETS
 54815-37
 JOB NO.

